

ultra site®

A PLAYCORE Company



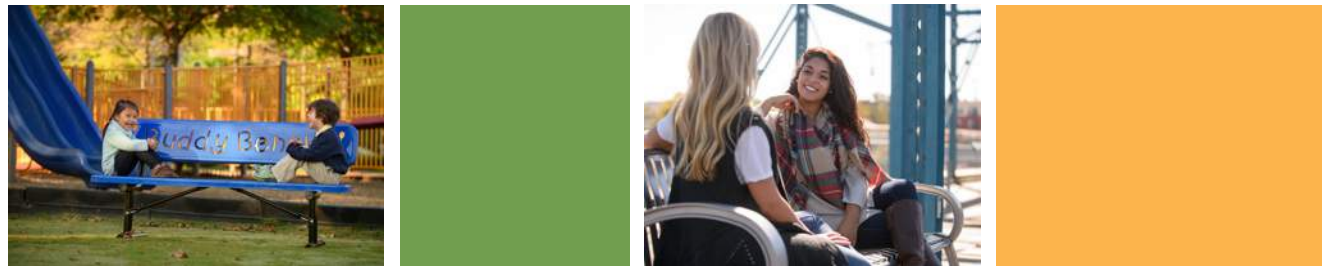
LIFE'S INTERMISSION



*site furnishings
& park amenities*

ULTRASITE : ENHANCING LIFE'S INTERMISSIONS

At UltraSite, we take pride in providing communities the opportunity to enjoy life's intermissions – a slight pause from a busy lifestyle. UltraSite's brands of site amenities, shades, shelters, dog parks and outdoor fitness products are the superior choice that provide a low maintenance, durable solution for any outdoor recreation location. We have been standing behind our products for nearly 20 years so that you can watch the sunrise, grill out with your family, or just have a nice place to relax while the kids are playing. We hope that UltraSite can join you as you build your next intermission.



7 REASONS TO CHOOSE THE SUPERIOR PERFORMANCE OF **ULTRACOAT**

UltraCoat is a premium thermoplastic coating by UltraSite® with superior adhesion that creates a seal-tight bond to the metal surface and ensures a smooth, shiny finish without the use of PVC.

- Superior Adhesion
- Resistance to Cutting and Vandalism
- Environmentally Friendly
- No Runs or Drips
- Easily Repaired
- Smooth Finish Prevents Mold and Mildew
- UV Protection

PREMIUM COLLECTION

Sleek designs to enhance any landscape.

Phoenix	5	Palmetto	13
Wilmington	6	Richmond	14
Hartford	7	Madison	16
Hamilton	8	Durham	18
Augusta	9	Charleston	20
Huntington	10	Savannah	22
Pasadena	11	Lexington	23
Kensington	12	Oxford	24

ULTRACOAT COLLECTION

Premium Thermoplastic coating for lasting durability.

Benches	26-35
Tables	36-49
Receptacles/Planters	50-53
Customization	54-55
Early Childhood	56-59

NATURAL COLLECTION

Recycled Plastic, Wood & Aluminum for a natural aesthetic.

Recycled Benches	60-63
Recycled Tables	64-68
Recycled Planters/Receptacles	69-70
Aluminum	72
Recycled Early Childhood	73

ACCESSORIES

Complete your space with coordinating accessories.

Receptacles & Planters	75
Umbrellas	76-77
Bollards	78-79
Bike Racks	80-82
Grills	83-84
Recreation	85

SHOWCASE

Complementary outdoor products from our family of brands.

UltraShade/UltraShelter	87
BarkPark	88-89
ActionFit	90-91
Dero	92
Grandstands	93

SPECIFICATIONS

Index	94-95
Warranties	96
Plank & Color Options	97-99

PREMIUM COLLECTION



99-CDR6 6' Durham Bench with back, cedar recycled plastic planks, Spartan bronze frame

UltraSite's Premium Collection is now on CADdetails!
microsite.caddetails.com/4643

PHOENIX COLLECTION



66SM-HS4 4' Phoenix Bench, silver vein



68SM-HS8 8' Phoenix Bench, ultra silver metallic



69SM-CDR6 6' Phoenix Bench, cedar recycled plastic planks, black frame

66/68/69 | NEW PHOENIX BENCH

- 4', 6', and 8' lengths
- 4" structural steel tubing frame
- Choose between recycled plastic planks or powder coated steel
- All stainless steel hardware
- All MIG Welded
- Inground (S) or surface mount (SM)
- See page 99 for steel color options and page 97 for recycled plastic color options.

4 FOOT	6 FOOT	8 FOOT
66-HS4	69-HS6	68-HS8
66-GRY4	69-GRY6	68-GRY8
66-CDR4	69-CDR6	68-CDR8
66-BRN4	69-BRN6	68-BRN8
66-GRN4	69-GRN6	68-GRN8

65 | NEW PHOENIX TABLE

- 6' table top with 4' seats
- 4" structural steel tubing frame
- Choose between recycled plastic planks or powder coated steel
- All stainless steel hardware
- All MIG Welded
- Inground (S) or surface mount (SM)
- See page 99 for steel color options and page 97 for recycled plastic color options.



65SM-CDR6 6' Phoenix Table, cedar recycled plastic planks, black frame

6 FOOT
65-HS6
65-GRY6
65-CDR6
65-BRN6
65-GRN6

WILMINGTON
COLLECTION

974-S6 6' Wilmington Bench, vertical slats, ultra silver metallic

HARTFORD
COLLECTION

10-RDHS Hartford Table, blue vein

974 | WILMINGTON BENCH

- 4', 6', and 8' lengths
- Cast aluminum frame with powder coated finish
- Bolt together design
- All MIG Welded
- All stainless steel hardware
- Available in vertical or horizontal slats
- Portable and/or surface mount
- Optional Center Arm Kit (P-974-ARM) available and sold separately
- See page 99 for color options



974-HS6 6' Wilmington Bench, horizontal slats, matte black
Wilmington Memorial Bench available, see pg. 55

	4 FOOT	6 FOOT	8 FOOT
Vertical Slats	974-S4	974-S6	974-S8
Horizontal Slats	974-HS4	974-HS6	974-HS8

Complementary Receptacle

CL-36 | CLASSIC RECEPTACLE WITH DOOR

- 1/4" x 1-1/2" steel flat bar
- All MIG welded frame
- Only available in powder coated finish
- All stainless steel hardware
- Portable and/or surface mount
- Lid and liner included



CL-36 Classic Receptacle with Door, vertical slat, black with matching flat top lid

FLAT TOP LID	ASH URN LID	RAIN BONNET LID
CL-36FT	CL-36AU	CL-36RB



11SM-HS4 4' Hartford Bench, Black

11/12 | HARTFORD BENCH

- 4' and 6' lengths
- Powder coated finish
- Available with (11) or without back (12)
- Inground (S) or surface mount (SM)
- See page 99 for color options

	4 FOOT	6 FOOT
11 SERIES	11-HS4	11-HS6
12 SERIES	12-HS4	12-HS6



10-RDHS Hartford Table, Black

10-RDHS | HARTFORD TABLE

- 36" solid table top with umbrella hole
- Powder coated finish
- Portable and/or surface mount
- See page 99 for color options

Complementary Receptacle

AG-36 | AUGUSTA RECEPTACLE

- 36 gallon capacity
- Powder coated finish
- 1-1/2" x 1/4" flat steel strips
- Top and bottom rings are 1" pipe
- All MIG welded frame
- Portable and/or surface mount
- Lid and liner included
- See page 99 for color options



AG-36FT Augusta Receptacle, vertical slat, flat top lid, Spartan bronze

FLAT TOP	ASH URN	RAIN BONNET
AG-36FT	AG-36AU	AG-36RB

HAMILTON
COLLECTION



91C-S6 Hamilton Bench, vertical slat, Spartan bronze metallic
LX-36RB Lexington Receptacle with Rain Bonnet Lid, Spartan bronze metallic



AUGUSTA
COLLECTION

93N-HS6 6' Augusta Bench with Back, no arm rests, Spartan bronze

91/92 | HAMILTON BENCH



92-S6 6' Hamilton Bench without Back, vertical slat, black

- 2', 4', 6', or 8' lengths
- Fully welded with powder coated finish
- Vertical or Horizontal Slats
- Frame is a 1" x 1" square solid steel bar
- Available with (91) and without back (92)
- Portable and/or surface mount
- Optional Center Arm (C) and No Side Arms (N)
- See page 99 for color options

91 SERIES	2 FOOT	4 FOOT	6 FOOT	8 FOOT
Vertical Slats	91-S2	91-S4	91-S6	91-S8
Horizontal Slats	91-HS2	91-HS4	91-HS6	91-HS8
92 SERIES	4 FOOT	6 FOOT		
Vertical Slats	92-S4	92-S6		
Horizontal Slats	92-HS4	92-HS6		

93/94 | AUGUSTA BENCH



94N-HS6 6' Augusta Bench without Back, no arm rests, Spartan bronze

- 6' length
- Fully welded with powder coated finish
- All MIG welded
- Legs are made from 3/4" laser cut steel plate
- Available with (93) and without back (94)
- Portable and/or surface mount
- Optional Center Arm (C), and No Side Arms (N)
- See page 99 for color options

93 SERIES	6 FOOT
No Arms	93N-HS6
Side & Center Arms	93C-HS6
Side Arms	93-HS6
94 SERIES	6 FOOT
No Arms	94N-HS6
Side Arms	94-HS6

364/30 | HAMILTON TABLE



364-RDSD Hamilton Table, solid table top with 91-S2 2' Hamilton Bench, vertical slat, brown finish



30SM-S Hamilton Table with 4 seats, vertical slat, black

- The 30 round table comes complete with 2, 3, or 4 freestanding seats, powder coated finish, inground (S) or surface mount (SM)
- The portable 364 table has a round solid top with a powder coated finish, (91) 2' Hamilton Chair recommended (sold separately)
- See page 99 for color options

364 SERIES	ROUND	30 SERIES	4 SEATS	3 SEATS (Single Access)	2 SEATS (Double Access)
	364-RDSD		30-S	30H3-S	30H2-S

Complementary Receptacle



LX-36FT Lexington Trash Receptacle, vertical slat pattern, beige with matching flat top lid

LX-36 | LEXINGTON RECEPTACLE

- 36 gallon capacity
- Powder coated finish
- 1/8" x 2" steel flat bar
- All MIG welded frame
- All stainless steel hardware
- Portable and/or surface mount
- Lid and liner included

FLAT TOP	ASH URN	RAIN BONNET
LX-36FT	LX-36AU	LX-36RB



AG-36FT Augusta Receptacle, vertical slat, flat top lid, Spartan bronze

AG-36 | AUGUSTA RECEPTACLE

- 36 gallon capacity
- Powder coated finish
- 1-1/2" x 1/4" flat steel strips
- Top and bottom rings are 1" pipe
- All MIG welded frame
- Portable and/or surface mount
- Lid and liner included
- See page 99 for color options

FLAT TOP	ASH URN	RAIN BONNET
AG-36FT	AG-36AU	AG-36RB



HUNTINGTON
COLLECTION

50SM-HX Huntington Table with 4 Chairs, blue vein



PASADENA
COLLECTION

14-P2 2' Pasadena Bench and 15-P6 6' Pasadena Bench, NEW sky blue and NEW spring green



53-HX6 6' Huntington Bench with Back, Spartan bronze

52/53 | HUNTINGTON BENCH

- 2', 4', 6' and 8' lengths available
- Fully welded with powder coated finish
- 1-1/2" square tubing
- Available with (53) and without back (52)
- Portable and/or surface mount
- See page 99 for color options

	2 FOOT	4 FOOT	6 FOOT	8 FOOT
52 SERIES	—	52-HX4	52-HX6	52-HX8
53 SERIES	53-HX2	53-HX4	53-HX6	53-HX8



15-P6 Pasadena Bench, ultra silver metallic



15-P2 Pasadena Bench, NEW spring green

15 | PASADENA BENCH

- 2', 4' and 6' lengths available
- Fully welded with powder coated finish
- Formed 1/4" steel plate with precision punched perforated pattern
- Portable and/or surface mount
- See page 99 for color options

	2 FOOT	4 FOOT	6 FOOT
15 SERIES	15-P2	15-P4	15-P6

Endless Configuration Possibilities!

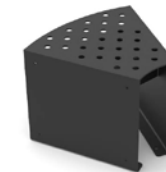


50SM-HX Huntington Table with 4 Chairs, Spartan bronze

50 | HUNTINGTON TABLE WITH 4 CHAIRS

- Features solid powder coated table top with four chairs
- Chairs feature both 1-1/2" and 1" square tubing
- Chairs (53) can also be purchased separately
- Chairs are portable and/or surface mount, table is surface mount only
- See page 99 for color options

TABLE WITH 4 CHAIRS	CHAIR
50SM-HX	53-HX2



14-P2 Pasadena Bench, black

14 | PASADENA BENCH

- 2' length available
- Fully welded with powder coated finish
- Formed 1/4" steel plate with precision punched perforated pattern
- Portable and/or surface mount
- See page 99 for color options

	2 FOOT
14 SERIES	14-P2

Complementary Receptacle



51-HXFT Huntington Receptacle, flat top lid, Spartan bronze with burgundy backing

51-HX | HUNTINGTON RECEPTACLE

- 32 gallon capacity
- Powder coated finish
- Inner shield can be powder coated in a different color
- 1" square steel tubing
- Top and bottom rings are 1-1/2" square steel tubing
- All MIG welded
- Portable and/or surface mount
- Lid and liner included
- See page 99 for color options

FLAT TOP	ASH URN	RAIN BONNET
51-HXFT	51-HXAU	51-HXRB



41-SL Kensington Receptacle, vertical slat, black

41-SL | KENSINGTON RECEPTACLE

- Features a side loading option and a solid top
- 36 gallon capacity
- Powder coated finish
- 1-1/2" x 1/4" flat steel strips
- All MIG welded frame
- Portable and/or surface mount
- Lid and liner included
- See page 99 for color options

KENSINGTON
COLLECTION



43SM-S6 6' Kensington Bench with Back, black



44SM-S6 6' Kensington Bench without Back, black

43/44 | KENSINGTON BENCH

- 6' length
- Powder coated finish
- Available with (43) or without back (44)
- Inground (S) or surface mount (SM)
- See page 99 for color options

	6 FOOT
43 SERIES	43-S6
44 SERIES	44-S6

40/42 | KENSINGTON TABLE

- Choose between the single pedestal square slat table with four seats (40) or round table with three slat seats and a solid top (42)
- Seats fabricated from a 1/4" steel plate with rolled slats
- Powder coated finish
- The 40 is available inground (S) or surface mount (SM), the 42 can be portable and/or surface mount
- See page 99 for color options

	SURFACE MOUNT	INGROUND	3 SEATS
40 SERIES	40SM-S	40S-S	40SMH3-S
42 SERIES	42-RDS	—	



40SM-S Kensington Square Pedestal Table with 4 seats, black



42-RDS Kensington Round Solid Top Table with 3 seats, black



41-SL Kensington Receptacle, vertical slat, black

41-SL | KENSINGTON RECEPTACLE

- Features a side loading option and a solid top
- 36 gallon capacity
- Powder coated finish
- 1-1/2" x 1/4" flat steel strips
- All MIG welded frame
- Portable and/or surface mount
- Lid and liner included

PALMETTO
COLLECTION



800-RS3 Palmetto Bench, 3-seat, black



800-RS3 Palmetto Bench, 3-seat, black

800 | PALMETTO BENCH

- 2, 3, and 4 seat options
- Powder coated finish
- Manufactured with 5/8" steel rods
- 23" wide seats
- All stainless steel hardware
- Portable (P), surface mount (SM), or inground (S)
- See page 99 for color options

2 SEAT	3 SEAT	4 SEAT
800-RS2	800-RS3	800-RS4

SV-R32 | PALMETTO RECEPTACLE

- 32 gallon capacity
- 29" square x 33-3/16" high
- Powder coated finish
- Manufactured with 5/8" steel rods
- Portable (P) or surface mount (SM)
- Lid and liner included
- See page 99 for color options



SV-R32FT Palmetto Receptacle with Flat Top, black

FLAT TOP LID	ASH URN LID	RAIN BONNET LID
SV-R32FT	SV-R32AU	SV-R32RB

RICHMOND STEEL
COLLECTION



82S-HS6 6' Richmond Bench without Back, black

RICHMOND RECYCLED
COLLECTION



61S-CDR6 6' Richmond Bench with Back, cedar recycled plastic planks, black frame



81S-HS6 6' Richmond Bench, blue

81-HS6 | RICHMOND BENCH

- 6' length
- Features 3" square tubing legs
- Powder coated Steel with (81) and without back (82)
- Inground (S) or surface mount (SM)
- Optional Center Arm available (C)
- See page 99 for color options

81 BENCH	82 BENCH
81-HS6	82-HS6
81C-HS6	82C-HS6



62SM-CDR6 6' Richmond Bench without back, cedar recycled plastic planks, black frame

61/62 | RICHMOND BENCH

- 6' length
- Features 3" square tubing legs
- Available with (61) and without back (62)
- Recycled plastic planks with powder coated frame
- Inground (S) or surface mount (SM)
- See page 97 for plank color options

61 SERIES	62 SERIES
61-GRY6	62-GRY6
61-CDR6	62-CDR6
61-BRN6	62-BRN6
61-GRN6	62-GRN6



63SM-HS6 Richmond Table, black

63SM-HS6 | RICHMOND TABLE

- 6' and 8' lengths available
- 4" x 4" x 11 ga structural steel tubing
- Stainless steel hardware
- All MIG welded
- Powder coated finish
- Inground (S) or surface mount (SM)
- See page 99 for color options

63 SERIES
63-HS6
63-HS8
63H-HS8



64-CDR6 6' Richmond Table, portable, cedar recycled plastic planks, black frame

63/64 | RICHMOND TABLE

- 6' length
- 2" x 4" recycled plastic planks
- 2-3/8" O.D. frames
- Powder coated frame
- Available as a multi pedestal
- table (63) or portable table with a walk-through design (64)
- Inground or surface mount (63) and portable (64)

63 SERIES	64 SERIES	64 SERIES 8 FT	64 SERIES ADA 8 FT
63-GRY6	64-GRY6	64-GRY8	64H-GRY8
63-CDR6	64-CDR6	64-CDR8	64H-CDR8
63-BRN6	64-BRN6	64-BRN8	64H-BRN8
63-GRN6	64-GRN6	64-GRN8	64H-GRN8

Complementary Receptacle



41-SL Kensington Receptacle, vertical slat, black

41-SL | KENSINGTON RECEPTACLE

- Features a side loading option and a solid top
- 36 gallon capacity
- Powder coated finish
- 1-1/2" x 1/4" flat steel strips
- All MIG welded frame
- Portable and/or surface mount
- Lid and liner included



60-CDR34 Richmond Trash Receptacle, cedar recycled plastic planks

60 | RICHMOND RECEPTACLE

- 32 gallon capacity
- Recycled plastic planks with powder coated tubing
- Includes liner and flat top lid
- See page 97 for plank color options

FLAT TOP LID	ASH URN LID	RAIN BONNET LID
60-GRY34FT	60-GRY34AU	60-GRY34RB
60-CDR34FT	60-CDR34AU	60-CDR34RB
60-BRN34Ft	60-BRN34AU	60-BRN34RB
60-GRN34FT	60-GRN34AU	60-GRN34RB

MADISON STEEL
COLLECTION



72-S6 6' Madison Bench without Back, Spartan bronze metallic

MADISON IPE
COLLECTION



72-16 6' Madison Bench with Ipe Wood, Spartan bronze frame



71-S6 6' Madison Bench with Powder Coated Finish, matte black

71/72/73 | MADISON BENCH

- 4', 6', and 8' lengths available
- 3/4" steel plate legs reinforced with 1/4" thick support bars
- Powder coated steel slats are 1/4" x 5"
- Available with (71) and without back (73)
- Without back option also available without armrests (72)
- Portable and/or surface mount
- See page 99 for color options

	4 FOOT	6 FOOT	8 FOOT
71 SERIES	71-S4	71-S6	71-S8
72 SERIES	72-S4	72-S6	72-S8
73 SERIES	73-S4	73-S6	73-S8



71-16 6' Madison Bench with Ipe Wood, Spartan bronze frame

71/72/73 | MADISON BENCH IPE

- 4', 6', and 8' lengths available
- Ipe Wood Planks with Powder coated steel frame
- 3/4" steel plate legs reinforced with 1/4" thick support bars
- 1-1/4" x 6" sealed Ipe wood planks
- Available with (71) and without back (73)
- Without back option also available without armrests (72)
- Portable and/or surface mount

	4 FOOT	6 FOOT	8 FOOT
71 SERIES	71-14	71-16	71-18
72 SERIES	72-14	72-16	72-18
73 SERIES	73-14	73-16	73-18

Complementary Receptacle



CL-36 Classic Receptacle with Door, vertical slat, black with matching flat top lid

CL-36 | CLASSIC RECEPTACLE WITH DOOR

- 1/4" x 1-1/2" steel flat bar
- All MIG welded frame
- Powder coated finish
- All stainless steel hardware
- Portable and/or surface mount
- Lid and liner included

FLAT TOP LID	ASH URN LID	RAIN BONNET LID
CL-36FT	CL-36AU	CL-36RB



74-16 6' Madison Table with Ipe Wood, Spartan bronze frame

74 | MADISON TABLE

- 4', 6', and 8' lengths available
- Ipe Wood Planks with Powder coated steel frame
- 3/4" steel plate legs reinforced with 1/4" thick support bars
- 1-1/4" x 6" sealed Ipe wood planks
- Portable and/or surface mount
- Pedestal style table offers easy walk through access.

	4 FOOT	6 FOOT	8 FOOT
74 SERIES	74-14	74-16	74-18



75-36RB Madison Receptacle with Ipe wood, Spartan bronze frame with matching rain bonnet lid

75 | MADISON RECEPTACLE

- 36 Gallon capacity
- Ipe Wood Planks with Powder coated steel frame
- Frame is made from 1/4" thick steel plates and 12 gauge rolled steel
- 1" x 3-1/2" sealed Ipe wood planks
- Portable and/or surface mount
- All stainless steel hardware
- Lid and Liner included

FLAT TOP LID	ASH URN LID	RAIN BONNET LID
75-36FT	75-36AU	75-36RB

DURHAM STEEL COLLECTION



99-S6 6' Durham Bench with Back, vertical slats, silver

DURHAM RECYCLED COLLECTION



99-CDR6 Durham Bench with Back, cedar recycled plastic planks, Spartan bronze frame



99-S6 Durham Bench with Back, black vertical slats

99 | DURHAM BENCH WITH BACK

- 4' and 6' lengths available
- Available in horizontal or vertical metal slats
- Powder coated finish
- Cast aluminum frame
- Portable and/or surface mount
- See page 99 for color options

4 FOOT 6 FOOT

99-HS4	99-HS6
--------	--------



99-CDR6 Durham Bench with back, cedar recycled plastic planks, Spartan bronze frame

99 | DURHAM BENCH WITH BACK

- 4' and 6' lengths available
- Recycled Plastic planks with powder coated frame
- Cast aluminum frame
- Portable and/or surface mount
- See page 97 for plank color options

4 FOOT	6 FOOT
99-GRY4	99-GRY6
99-CDR4	99-CDR6
99-BRN4	99-BRN6
99-GRN4	99-GRN6



98-S4 4' Durham Bench without Back, vertical slats, blue powder coated finish, black frame

98 | DURHAM BENCH WITHOUT BACK

- 4' and 6' lengths available
- Available in horizontal or vertical metal slats
- Powder coated finish
- Cast aluminum frame
- Portable and/or surface mount
- See page 99 for color options

4 FOOT 6 FOOT

98-S4	98-S6
-------	-------



98-CDR6 6' Durham Bench without Back, cedar recycled plastic planks, black frame

98 | DURHAM BENCH WITHOUT BACK

- 4' and 6' lengths available
- Recycled Plastic planks with powder coated frame
- Cast aluminum frame
- Portable and/or surface mount
- See page 97 for plank color options

4 FOOT	6 FOOT
98-GRY4	98-GRY6
98-CDR4	98-CDR6
98-BRN4	98-BRN6
98-GRN4	98-GRN6

Complementary Receptacle



LX-36FT Lexington Receptacle, vertical slat pattern, beige with matching flat top lid

LX-36 | LEXINGTON RECEPTACLE

- 36 gallon capacity
- Powder coated finish
- 1/8" x 2" steel flat bar
- All MIG welded frame
- All stainless steel hardware
- Portable and/or surface mount
- Lid and liner included

FLAT TOP LID	ASH URN LID	RAIN BONNET LID
LX-36FT	LX-36AU	LX-36RB

Complementary Receptacle



60-CDR34 Richmond Receptacle, cedar recycled plastic planks

60 | RICHMOND RECEPTACLE

- 32 gallon capacity
- Recycled plastic planks with powder coated tubing
- Lid and liner included
- See page 97 for plank color options

FLAT TOP LID	ASH URN LID	RAIN BONNET LID
60-GRY34FT	60-GRY34AU	60-GRY34RB
60-CDR34FT	60-CDR34AU	60-CDR34RB
60-BRN34FT	60-BRN34AU	60-BRN34RB
60-GRN34FT	60-GRN34AU	60-GRN34RB

CHARLESTON STEEL
COLLECTION



964-S6 6' Charleston Bench with Back, slat, black

CHARLESTON RECYCLED
COLLECTION



964-GRY6 6' Charleston Bench, gray recycled plastic planks, black frame



964-S6 6' Charleston Bench with Back, slat, green

964 | CHARLESTON BENCH WITH BACK

- 4', 6', and 8' lengths
- Thermoplastic finish
- 1-1/2" thick cast aluminum frame
- All stainless steel hardware
- Portable and/or surface mount
- Use code (AO) for add-on sections
- Optional Center Arm Kit (964-ARM) sold separately
- See page 99 for color options and 98 for pattern options

4 FOOT	6 FOOT	8 FOOT
964-V4	964-V6	964-V8
964-P4	964-P6	964-P8
964-FB4	964-FB6	964-FB8
964-W4	964-W6	964-W8
964-S4	964-S6	964-S8



964-BRN6 6' Charleston Recycled Bench, brown recycled plastic planks, black frame

964 | CHARLESTON RECYCLED BENCH WITH BACK

- 6' and 8' lengths
- Recycled planks with thermoplastic finish on frame
- 1-1/2" thick cast aluminum endframe
- All stainless steel hardware
- Portable and/or surface mount
- See page 97 for plank color options and page 99 for color options

6 FOOT	8 FOOT
964-GRY6	964-GRY8
964-CDR6	964-CDR8
964-BRN6	964-BRN8
964-GRN6	964-GRN8

968 | CHARLESTON RECYCLED BENCH WITHOUT BACK

- 6' and 8' lengths
- Recycled planks with thermoplastic finish on frame
- 1-1/2" thick cast aluminum endframe
- All stainless steel hardware
- Portable and/or surface mount
- See page 97 for plank color options and page 99 for color options

6 FOOT	8 FOOT
968-GRY6	968-GRY8
968-CDR6	968-CDR8
968-BRN6	968-BRN8
968-GRN6	968-GRN8

CH | CHARLESTON RECEPTACLE

- Decorative rosettes around the top of the receptacle
- Powder coated finish on frame
- 32 gallon capacity
- 2" x 4" recycled plastic planks
- Lid and liner are included
- Portable and/or surface mount, IG mounting kit sold separately
- See page 97 for plank color options and page 99 for color options

FLAT TOP	ASH URN	RAIN BONNET
CH-GRY32FT	CH-GRY32AU	CH-GRY32RB
CH-CDR32FT	CH-CDR32AU	CH-CDR32RB
CH-BRN32FT	CH-BRN32AU	CH-BRN32RB
CH-GRN32FT	CH-GRN32AU	CH-GRN32RB



968-W4 4' Charleston Bench without Back, wave, green

968 | CHARLESTON BENCH WITHOUT BACK

- 4', 6', and 8' lengths
- Thermoplastic finish
- 1-1/2" thick cast aluminum frame
- All stainless steel hardware
- Portable and/or surface mount
- Use code (AO) for add-on sections
- See page 99 for color options and 98 for pattern options

4 FOOT	6 FOOT	8 FOOT
968-V4	968-V6	968-V8
968-P4	968-P6	968-P8
968-FB4	968-FB6	968-FB8
968-W4	968-W6	968-W8
968-S4	968-S6	968-S8



968-CDR6 6' Charleston Recycled Bench without back, cedar recycled plastic planks, black frame



CH-GRN32FT Charleston Receptacle, green recycled plastic planks, black frame

LX-36 | LEXINGTON RECEPTACLE

- 36 gallon capacity
- Powder coated finish
- 1/8" x 2" steel flat bar
- All MIG welded frame
- All stainless steel hardware
- Portable and/or surface mount
- Lid and liner included

FLAT TOP LID	ASH URN LID	RAIN BONNET LID
LX-36FT	LX-36AU	LX-36RB

Complementary Receptacle



LX-36FT Lexington Receptacle, vertical slat pattern, beige with matching flat top lid

SAVANNAH
COLLECTION



922-S6 Savannah Bench, Bow, green
SV-B32FT, Savannah Receptacle, Bow, green, with matching flat top

LEXINGTON
COLLECTION



954-FB6 Lexington Bench with Back, Fiesta, black
FB-32 32 Gallon Receptacle, Fiesta, black with matching rain bonnet lid.



922-S6 6' Savannah Bench, slat, black



922 | SAVANNAH BENCH

- 4', 6', and 8' lengths
- Standard in thermoplastic
- Powder coat available for an upcharge
- 2" x 2" all MIG welded square tube frame
- All stainless steel hardware
- Portable and/or surface mount
- See page 99 for color options

4 FOOT	6 FOOT
922-B4	922-B6
922-M4	922-M6
922-S4	922-S6



958-S6 6' Lexington Bench without Back, Slat, black

954/958 | LEXINGTON BENCH

- 4', 6', and 8' lengths
- UltraCoat® thermoplastic finish
- 1-1/2" thick cast aluminum frame
- Available with back (954) and without back (958)
- All stainless steel hardware
- Portable and/or surface mount
- Add-ons optional (Example: 954AO-V4)
- Optional Center Arm Kit (954-ARM) sold separately
- See page 99 for color options and 98 for pattern options

4 FOOT	6 FOOT	8 FOOT	4 FOOT	6 FOOT	8 FOOT
954-V4	954-V6	954-V8	958-V4	958-V6	958-V8
954-P4	954-P6	954-P8	958-P4	958-P6	958-P8
954-FB4	954-FB6	954-FB8	958-FB4	958-FB6	958-FB8
954-W4	954-W6	954-W8	958-W4	958-W6	958-W8
954-S4	954-S6	954-S8	958-S4	958-S6	958-S8

SV-32 | SAVANNAH RECEPTACLE

- 32 gallon capacity
- 29" square x 33-1/2" high
- Standard in thermoplastic
- Powder coat available for an upcharge
- Lid and plastic liner included
- 2" x 2" all MIG welded square tube frame
- Portable and/or surface mount
- See page 99 for color options



SV-S32FT Trash Receptacle, slat, black

FLAT TOP LID	ASH URN LID	RAIN BONNET LID
SV-B32FT	SV-B32AU	SV-B32RB
SV-M32FT	SV-M32AU	SV-M32RB
SV-S32FT	SV-S32AU	SV-S32RB



LX-72FT Lexington Dual Receptacle, black

FLAT TOP	ASH URN	RAIN BONNET
LX-72FT	LX-72AU	LX-72RB
DECAL OPTIONS		
"CANS" 01-05-0136	"PLASTICS" 01-05-0137	"TRASH" 01-05-0135
		"RECYCLE" 01-05-0130

LX-72 | DUAL LEXINGTON RECEPTACLE

- Holds two 32 gallon liners and two powder coated lids
- Powder coated finish
- 1/8" x 2" steel flat bar
- Optional decals are white lettering with black background
- Decals installed onsite
- Portable and/or surface mount
- Lids and liners included
- See page 99 for color options

LX-36 | LEXINGTON RECEPTACLE

- 36 gallon capacity
- Powder coated finish
- 1/8" x 2" steel flat bar
- All MIG welded frame
- Portable and/or surface mount
- Lid and liner included
- See page 99 for color options



FLAT TOP	ASH URN	RAIN BONNET
LX-36FT	LX-36AU	LX-36RB

RD2418-LX | LEXINGTON PLANTER

- 24" wide x 18" high planters
- Powder coated finish
- 1/8" x 2" steel flat bar
- All MIG welded frame
- Portable and/or surface mount
- Inground mounting kit available - sold separately
- 01-05-0212 liner sold separately
- See page 99 for color options





OXFORD
COLLECTION

86-S6 6' Oxford Bench with Back, ultra blue



86-S6 6' Oxford Bench with Back, ultra blue

86 | OXFORD BENCH WITH BACK

- 4' and 6' lengths
- Fully welded design
- UltraCoat thermoplastic finish
- 7 gauge steel seat with 3/8" steel plate legs
- Portable and/or surface mount
- See page 99 for color options

4 FOOT **6 FOOT**

86-S4 86-S6



85-S6 6' Oxford Bench without Back, ultra blue

85 | OXFORD BENCH WITHOUT BACK

- 4' and 6' lengths
- Fully welded design
- UltraCoat thermoplastic finish
- 7 gauge steel seat with 3/8" steel plate legs
- Portable and/or surface mount
- See page 99 for color options

4 FOOT **6 FOOT**

85-S4 85-S6



OXFORD
COLLECTION

238-SR6U 6' Oxford Table, black



238-SR6U 6' Oxford Table with umbrella hole, black, ultra silver metallic frame

238 | **NEW** OXFORD TABLE

- 6' and 8' lengths
- Thermoplastic finish with powder coated frame
- 2-3/8" O.D. x 11 gauge structural steel tubing
- All MIG welded frame with walk-through design
- All stainless steel hardware
- Portable and/or surface mount
- Umbrella hole option (U)
- See page 99 for color options

	6 FOOT	8 FOOT	8 FOOT ADA
WITH UMBRELLA	238-SR6	238-SR8	238H-SR8
WITHOUT UMBRELLA	238-SR6U	238-SR8U	238H-SR8U



OX-36FT Oxford Receptacle, ultra blue vertical slat with matching flat top lid

OX-36 | OXFORD RECEPTACLE

- 36 gallon capacity
- Thermoplastic finish
- Slat design with flared top
- All MIG welded
- Lid and liner included
- See page 99 for color options

FLAT TOP	ASH URN	RAIN BONNET
OX-36FT	OX-36AU	OX-36RB

ULTRACOAT COLLECTION
—
BENCHES



942SM-VR6 Extra Heavy Duty Bench without Back, inground (S), red with diamond rolled pattern, black frame



940P-V6 6' Extra Heavy-Duty Bench with Back, diamond pattern, black frame
EX-32 32 Gallon Receptacle, green with black rain bonnet top



940P-P6 6' Extra Heavy-Duty Bench with Back, portable, green perforated pattern, black frame

940 | EXTRA HEAVY-DUTY BENCH WITH BACK

The UltraSite® 940 Bench continues to be the most popular series at UltraSite®.

- Available in 4', 6', 8', 10', and 15' lengths
- 12" seating standard or optional deluxe (D) 15" seating
- Thermoplastic finish with powder coated frame
- 2-3/8" O.D. all MIG welded frame
- 1" O.D. brace (Portable frame only)
- All stainless steel hardware
- Portable (P), inground (S), surface mount (SM), or wall mount (WM)
- Cover Plates (M-Cover Plates) available for inground (S) and surface mount (SM)
- Optional Center Arm Kit (940-ARM) sold separately
- See page 99 for color options and 98 for seating patterns

6 FOOT	12" seating	(D) 15" seating
	940-V6	940-DV6
	940-P6	940-DP6
		940-FV (frame only)

8 FOOT	12" seating	(D) 15" seating
	940-V8	940-DV8
	940-P8	940-DP8
		940-FV (frame only)

10 FOOT	12" seating	(D) 15" seating
	940-V10	940-DV10
	940-P10	940-DP10
		940-FV10 (10' frame only)

15 FOOT	12" seating	(D) 15" seating
	940-V15	940-DV15
	940-P15	940-DP15
		940-FV15 (15' frame only)



942S-V15 15' Extra Heavy-Duty Bench without Back, inground, blue diamond pattern, black frame



932SM-P6 6' Mall Bench, surface mount, blue perforated pattern, black frame



942SM-P6 6' Extra Heavy-Duty Bench without Back, surface mount, green perforated pattern, black frame

942 | EXTRA HEAVY-DUTY BENCH WITHOUT BACK

- Available in 4', 6', 8', 10', and 15' lengths
- 12" seating standard or optional deluxe (D) 15" seating
- Thermoplastic finish with powder coated frame
- 2-3/8" O.D. all MIG welded frame
- 1" O.D. brace (Portable frame only)
- All stainless steel hardware
- Portable (P), inground (S), surface mount (SM), or wall mount (WM)
- Cover Plates (M-Cover Plates) available for inground (S) and surface mount (SM)
- Optional Center Arm Kit (942-ARM) sold separately
- See page 99 for color options and 98 for seating patterns

6 FOOT	12" seating	(D) 15" seating
	942-V6	942-DV6
942-P6	942-DP6	
	942-FV (frame only)	

8 FOOT	12" seating	(D) 15" seating
	942-V8	942-DV8
942-P8	942-DP8	
	942-FV (frame only)	

10 FOOT	12" seating	(D) 15" seating
	942-V10	942-DV10
942-P10	942-DP10	
	942-FV10 (10' frame only)	

15 FOOT	12" seating	(D) 15" seating
	942-V15	942-DV15
942-P15	942-DP15	
	942-FV15 (15' frame only)	



934SM-V6 6' Geometric Mall Bench, surface mount, green diamond pattern, black frame

934 | GEOMETRIC MALL BENCH

- Available in 6' and 8' lengths
- 6' Bench has 32" square center, 8' Bench has 56" square center
- 20" deep seat with 4" tall outside border
- Thermoplastic finish with powder coated frame
- 4" bollard-style square tubing
- All stainless steel hardware
- Inground (S) or surface mount (SM)
- Seating pattern options: perforated, diamond
- See page 99 for color options

6 FOOT	8 FOOT
934-V6	934-V8
934-P6	934-P8



970S-V6 6' Cantilevered Bench, Inground, brown diamond pattern, black frame

970 | CANTILEVERED BENCH

- Available in 4', 6', and 8' lengths
- Thermoplastic finish with powder coated frame
- Heavy-duty 2-3/8" O.D. all MIG welded frame
- All stainless steel hardware
- Inground mount only
- See page 99 for color options and 98 for seating patterns

4 FOOT	6 FOOT	8 FOOT	PATTERN
970-V4	970-V6	970-V8	DIAMOND
970-P4	970-P6	970-P8	PERFORATED
970-FB4	970-FB6	970-FB8	FIESTA
970-W4	970-W6	970-W8	WAVE
970-S4	970-S6	970-S8	SLAT



932SM-V6 6' Mall Bench, surface mount, blue diamond pattern, black frame

932 | MALL BENCH

- Available in 4', 6', and 8' lengths
- 15" deep seat with 4" tall outside border
- Thermoplastic finish with powder coated frame
- All stainless steel hardware
- Inground (S) or surface mount (SM)
- Seating pattern options: perforated, diamond, wave
- See page 99 for color options

4 FOOT	6 FOOT	8 FOOT
932-V4	932-V6	932-V8
932-P4	932-P6	932-P8
932-W4	932-W6	932-W8

See pg. 46 for matching table.



965SM-W4 4' Contour Bench with Back, surface mount, black wave pattern, Spartan bronze frame

965 | CONTOUR BENCH WITH BACK

- 4', 6', and 8' lengths
- Add-ons optional for 4', 6', or 8' lengths
- Thermoplastic finish with powder coated frame
- 2-3/8" O.D. frame
- All stainless steel hardware
- Portable (P), inground (S), or surface mount (SM)
- Cover Plate (M-Cover Plates) available for inground (S) or surface mount (SM)
- Optional Center Arm Kit (965-ARM) sold separately
- See page 99 for color options and 98 for seating patterns



965SM-FB6 6' Contour Bench with Back, surface mount, blue fiesta pattern, black frame

4 FOOT	6 FOOT	8 FOOT
965-V4	965-V6	965-V8
965-P4	965-P6	965-P8
965-FB4	965-FB6	965-FB8
965-W4	965-W6	965-W8
965-S4	965-S6	965-S8

966 | CONTOUR BENCH WITHOUT BACK

- 4', 6', and 8' lengths
- Add-ons optional for 4', 6', or 8' lengths
- Thermoplastic finish with powder coated frame
- 2-3/8" O.D. frame
- All stainless steel hardware
- Portable (P), inground (S), or surface mount (SM)
- Cover Plate (M-Cover Plates) available for inground (S) or surface mount (SM)
- See page 99 for color options and 98 for seating patterns



966SM-P6 6' Contour Bench without Back, surface mount, green perforated pattern, black frame

4 FOOT	6 FOOT	8 FOOT
966-V4	966-V6	966-V8
966-P4	966-P6	966-P8
966-FB4	966-FB6	966-FB8
966-W4	966-W6	966-W8
966-S4	966-S6	966-S8



967-V6 6' Contour Bench Swing, blue diamond pattern, black frame

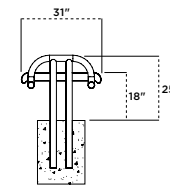
967 | CONTOUR BENCH SWING

- Available in 4' and 6' lengths
- 2-3/8" O.D. frame
- Thermoplastic finish with powder coated frame
- Uncoated galvanized swing chain
- Cover Plate (M-Cover Plates) available
- All stainless steel hardware
- Inground (S) mount only
- See page 99 for color options and 98 for seating patterns

4 FOOT	6 FOOT
967-V4	967-V6
967-P4	967-P6
967-FB4	967-FB6
967-W4	967-W6
967-S4	967-S6

976 | CONTOUR CANTILEVERED BENCH WITHOUT BACK

- Available in 4', 6', and 8' lengths and can be extended with 4', 6', or 8' add-on (AO) benches
- Thermoplastic finish with powder coated frame
- Heavy-duty 2-3/8" O.D. all MIG welded frame
- All stainless steel hardware
- Inground (S) or surface mount (SM)
- See page 99 for color options and 98 for seating patterns

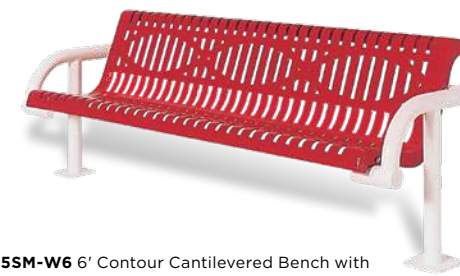


976SM-V4 4' Contour Cantilevered Bench without Back, surface mount, blue diamond pattern, black frame

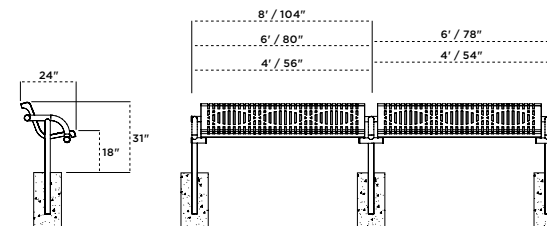
4 FOOT	6 FOOT	8 FOOT
976-V4	976-V6	976-V8
976-P4	976-P6	976-P8
976-FB4	976-FB6	976-FB8
976-W4	976-W6	976-W8
976-S4	976-S6	976-S8

975 | CONTOUR CANTILEVERED BENCH WITH BACK

- Available in 4', 6', and 8' lengths and can be extended with 4', 6', or 8' add-on (AO) benches
- Thermoplastic finish with powder coated frame
- Heavy-duty 2-3/8" O.D. all MIG welded frame
- All stainless steel hardware
- Inground (S) or surface mount (SM)
- See page 99 for color options and 98 for seating patterns
- Optional Center Arm Kit (965-ARM) sold separately



975SM-W6 6' Contour Cantilevered Bench with Back, surface mount, red wave pattern, white frame



4 FOOT	6 FOOT	8 FOOT
975-V4	975-V6	975-V8
975-P4	975-P6	975-P8
975-FB4	975-FB6	975-FB8
975-W4	975-W6	975-W8
975-S4	975-S6	975-S8



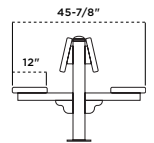
962SM-V6 6' Double-Sided Bollard Bench, surface mount, green diamond pattern, green frame



961SM-V6 6' Single-Sided Bollard Bench, surface mount, red diamond pattern, black frame

961/962 | BOLLARD STYLE BENCH

- Available in 6' and 8' lengths
- Thermoplastic finish with powder coated frame
- 4" bollard-style square post
- 2-3/8" O.D. all MIG welded seat support arm
- All stainless steel hardware
- Available single sided (961) or double sided (962)
- Inground (S) or surface mount (SM)
- Seating pattern options: perforated, perforated rolled, diamond, diamond rolled
- See page 99 for color options



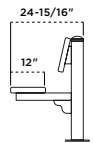
DOUBLE-SIDED (962)

6 FOOT

- 962-V6
- 962-VR6
- 962-P6
- 962-PR6

8 FOOT

- 962-V8
- 962-VR8
- 962-P8
- 962-PR8



SINGLE-SIDED (961)

6 FOOT

- 961-V6
- 961-VR6
- 961-P6
- 961-PR6

8 FOOT

- 961-V8
- 961-VR8
- 961-P8
- 961-PR8



321-V6 6' Single-Sided Canopy Bench, Inground Mount, blue diamond pattern, black frame

321/322 | CANOPY BENCH

- 6' lengths available one sided (321) or double sided (322) with canopy
- Thermoplastic finish with powder coated frame
- 4" x 4" square all MIG welded frame and support arms
- Canopy offers protection from the sun
- All stainless steel hardware
- Inground mount only
- Pattern options: perforated, diamond
- See page 99 for color options

SINGLE SIDED

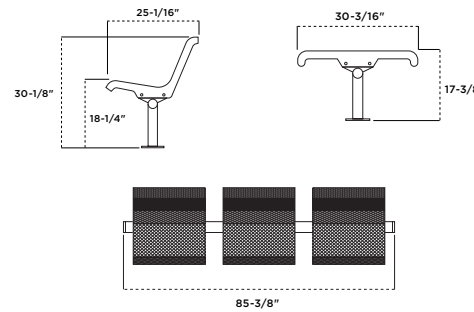
- 321-V6
- 321-P6

DOUBLE SIDED

- 322-V6
- 322-P6



800P-VS3 3-Seat Straight Bench with Back, portable, brown diamond pattern, brown frame



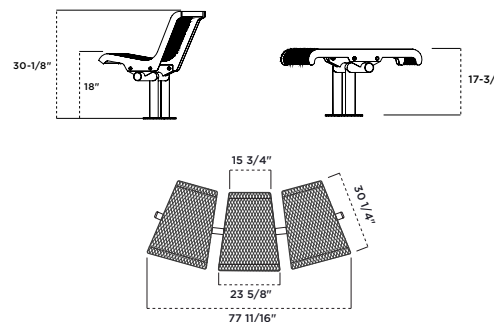
800/700 | STRAIGHT BENCH

- Thermoplastic finish with powder coated frame
- 2-3/8" O.D. all MIG welded frame
- 1-5/8" O.D. feet (portable only)
- All stainless steel hardware
- Portable (P), inground (S), or surface mount (SM)
- Available with (800) or without (700) back
- Available in 2 or 3 individual seat sections
- Seating pattern options: perforated, diamond, rod
- See page 99 for color options

WITH BACK	2 SEAT	3 SEAT	W/O BACK	2 SEAT	3 SEAT
	800-VS2	800-VS3		700-VS2	700-VS3
800-PS2	800-PS3	700-PS2	700-PS3		



715SM-VCX3 3-Seat Bench without Back, surface mount, green diamond pattern, black frame



815/715 | 830/730 | CONCAVE AND CONVEX BENCHES

The 3-seat 815 & 715 series has 15° angles, while the 830 & 730 series has 30° angles. This allows the seating to be placed in a semi-circular arrangement.

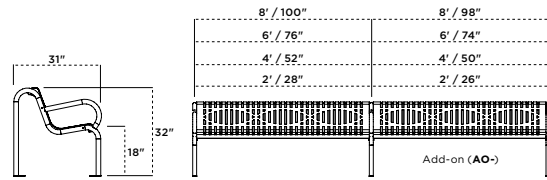
- Thermoplastic finish with powder coated frame
- 2-3/8" O.D. all MIG welded main support
- 1-5/8" O.D. feet (portable only)
- All stainless steel hardware
- Portable (P), inground (S), or surface mount (SM)
- Series 815 & 830 are with backs
- Series 715 & 730 are without backs
- Seating pattern options: perforated, diamond
- See page 99 for color options

815 / 715		830 / 730	
WITH BACK	W/O BACK	WITH BACK	W/O BACK
815-VCX3	715-VCX3	830-VCX3	730-VCX3
815-PCX3	715-PCX3	830-PCX3	730-PCX3
815-PCA3			
815-VCA3			

BENCHES



955SM-W6 6' Sierra Bench, surface mount, red wave pattern, red frame



955 | SIERRA BENCH

- Available in 2', 4', 6', and 8' with optional add-on (AO) benches
- Thermoplastic finish with powder coated frame
- 1-5/8" O.D. all MIG welded frame
- All stainless steel hardware
- Portable (P), inground (S), or surface mount (SM)
- Optional Center Arm Kit available and sold separately
- See page 99 for color options and 98 for seating patterns

BENCH	2 FOOT	4 FOOT	6 FOOT	8 FOOT
955-V24	955-V4	955-V6	955-V8	
955-P24	955-P4	955-P6	955-P8	
955-FB24	955-FB4	955-FB6	955-FB8	
955-W24	955-W4	955-W6	955-W8	
955-S24	955-S4	955-S6	955-S8	

ADD-ON	2 FOOT	4 FOOT	6 FOOT	8 FOOT
955AO-V24	955AO-V4	955AO-V6	955AO-V8	
955AO-P24	955AO-P4	955AO-P6	955AO-P8	
955AO-FB24	955AO-FB4	955AO-FB6	955AO-FB8	
955AO-W24	955AO-W4	955AO-W6	955AO-W8	
955AO-S24	955AO-S4	955AO-S6	955AO-S8	



96-S6 6' Jackson Bench, **NEW** orange
 JK-36FT Jackson Receptacle, **NEW** orange, matching flat top lid

96 | JACKSON BENCH WITH BACK

This powder coated bench features a bolt Bolt-Thru design for easy installation and a high end look.

- Available in 4', 6', and 8' lengths
- Powder coated frame and slats
- 1-1/2" square tubing frame
- All stainless steel hardware
- Portable and/or surface mount
- See page 99 for color options
- Seating pattern: slat only
- See page 50 for matching receptacle



96-S6 6' Jackson Bench, black slat pattern, black frame

4 FOOT	6 FOOT	8 FOOT
P96-S4	P96-S6	P96-S8

Jackson Memorial Bench available, see pg. 55



950P-V6 6' Capri Bench, portable, black diamond rolled pattern, black frame

950 | CAPRI BENCH

- Available in 4', 6', and 8' lengths
- Thermoplastic finish with powder coated frame
- Heavy-duty 2-3/8" O.D. all MIG welded frame
- All stainless steel hardware
- Portable (P), inground (S), or surface mount (SM)
- See page 99 for color options and 98 for seating patterns

4 FOOT	6 FOOT	8 FOOT
950-V4	950-V6	950-V8
950-P4	950-P6	950-P8
950-FB4	950-FB6	950-FB8
950-W4	950-W6	950-W8
950-S4	950-S6	950-S8



963-V6 Contour Bench, portable, blue diamond pattern, black frame

963 | CONTOUR BENCH

- Available in 4' and 6' lengths
- Thermoplastic finish with powder coated frame
- Heavy-duty 2-3/8" O.D. all MIG welded frame
- All stainless steel hardware
- Portable (P), inground (S), or surface mount (SM)
- See page 99 for color options

4 FOOT	6 FOOT
963-V4	963-V6



95-S6 6' Jackson Bench, black slat pattern, black frame

95 | JACKSON BENCH WITHOUT BACK

This powder coated bench features a Bolt-Thru design for easy installation and a high end look.

- Available in 4', 6', and 8' lengths
- Powder coated frame and slats
- 1-1/2" square tubing frame
- All stainless steel hardware
- Portable and/or surface mount
- See page 99 for color options
- Seating pattern: slat only

4 FOOT	6 FOOT	8 FOOT
P95-S4	P95-S6	P95-S8

See page 50 for matching receptacle.

ULTRACOAT COLLECTION
—
TABLES



358-RDV 46" Round Table, ultra blue diamond pattern, ultra blue frame



358-OV 46" Octagon Table, burgundy diamond pattern, silver frame
MUV-70 Black Umbrella

358 | SQUARE, OCTAGON, & ROUND TABLE

- 46" square, octagon, or round table with 1-9/16" I.D. umbrella hole standard
- Thermoplastic finish with powder coated frame
- 1-5/8" O.D. frame with 1" O.D. brace
- All MIG welded frame with walk-through design
- All stainless steel hardware
- Portable and/or surface mount
- Game top option available (add GT)
- See page 99 for color options and 96 for patterns

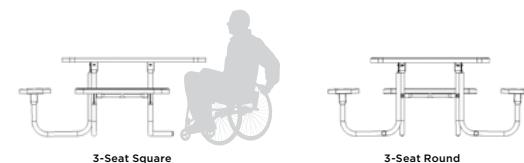


358-RDV 46" Round Table, green diamond pattern, black frame

SQUARE	SQUARE W/ GAME TOP	OCTAGON	OCTAGON W/ GAME TOP	ROUND	ROUND W/ GAME TOP
358-V	358-V-GT	358-OV	358-OV-GT	358-RDV	358-RDV-GT
358-P	358-P-GT	358-OP	358-OP-GT	358-RDP	358-RDP-GT
358-VR	358-VR-GT	358-OVR	358-OVR-GT	—	—
358-PR	358-PR-GT	358-OPR	358-OPR-GT	—	—

358H | 3-SEAT TABLES

- Open end allows for wheelchair access
- All stainless steel hardware
- Surface mount recommended
- See page 99 for color options and 98 for seating patterns



3-Seat Square

3-Seat Round

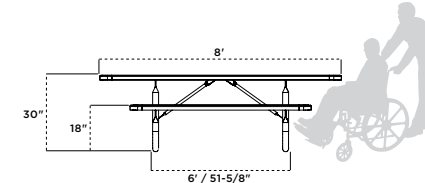
SQUARE	SQUARE W/ GAME TOP	OCTAGON	OCTAGON W/ GAME TOP	ROUND	ROUND W/ GAME TOP
358H-V	358H-V-GT	358H-OV	358H-OV-GT	358H-RDV	358H-RDV-GT
358H-P	358H-P-GT	358H-OP	358H-OP-GT	358H-RDP	358H-RDP-GT
358H-VR	358H-VR-GT	358H-OVR	358H-OVR-GT	—	—
358H-PR	358H-PR-GT	358H-OPR	358H-OPR-GT	—	—



238-V6 6' Extra Heavy-Duty Rectangular Table, blue diamond pattern, black frame



238H-V8 8' Double-Sided ADA Accessible Table, red diamond pattern, black frame



238H | EXTRA HEAVY-DUTY 8' DOUBLE SIDED ACCESSIBLE TABLE 

- Available in an 8' ADA Accessible option with double-sided accessibility
- Thermoplastic finish with powder coated frame
- 2-3/8" O.D. frame with 1" O.D. brace
- All MIG welded frame with walk-through designs
- All stainless steel hardware
- Portable and/or surface mount
- See page 99 for color options and 96 for patterns

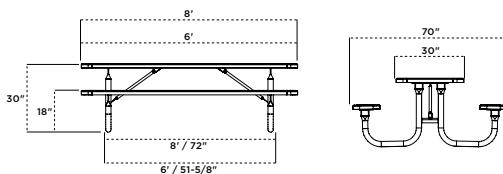
ADA Double-Sided

238H-V8
238H-VR8
238H-P8
238H-PR8
238-FV (frame only)

238 | EXTRA HEAVY-DUTY RECTANGULAR TABLE



238-P8 8' Extra Heavy-Duty Rectangular Table, black perforated pattern, black frame



- 4', 6' and 8' lengths
- Thermoplastic finish with powder coated frame
- 2-3/8" O.D. frame with 1" O.D. brace
- All MIG welded frame with walk-through designs
- All stainless steel hardware
- Portable and/or surface mount
- Umbrella hole option is available for 6' and 8' tables
- See page 99 for color options and 96 for patterns

4 FOOT	6 FOOT	8 FOOT
238-V4	238-V6	238-V8
238-P4	238-VR6	238-VR8
—	238-P6	238-P8
—	238-PR6	238-PR8
—	238-FV (frame only)	238-FV (frame only)
—	238-V6U (with umbrella hole)	238-V8U (with umbrella hole)
—	238-P6U (with umbrella hole)	238-P8U (with umbrella hole)

238-3 | EXTRA HEAVY-DUTY SHELTER TABLE



238-3-V10 10' Shelter Table, brown diamond pattern, black frame

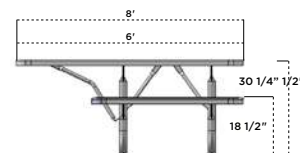
- Available in 10' or 12' lengths with 3 frames
- Thermoplastic finish with powder coated frame
- 2-3/8" O.D. frame with 1" O.D. brace
- All MIG welded frame with walk-through designs
- All stainless steel hardware
- Portable and/or surface mount
- Includes 2 sections and 3 legs for added support
- See page 99 for color options and 96 for patterns

10 FOOT, 3-FRAME	12 FOOT, 3-FRAME
238-3-V10	238-3-V12
238-3-P10	238-3-P12
238-3-FV (frame only)	238-3-FV (frame only)

238HS | EXTRA HEAVY-DUTY SINGLE-SIDED ADA TABLE 



238HS-V6 6' Extra Heavy-Duty Single-Sided ADA Table, portable, green diamond pattern, black frame



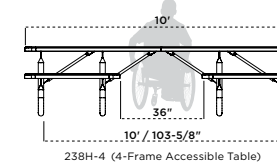
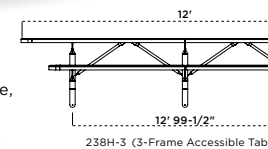
- 6' and 8' lengths
- ADA accessible
- Thermoplastic finish with powder coated frame
- 2-3/8" O.D. all MIG welded frame
- Features walk-through design
- 1" O.D. brace
- All stainless steel hardware
- See page 99 for color options and 96 for patterns

6 FOOT	8 FOOT
238HS-P6*	238HS-V8
238HS-V6*	238HS-VR8
—	238HS-P8
—	238HS-PR8
—	238HS-FV (frame only)

*Must be installed with surface mount clamps or inground post.



238H-3-V12 12' ADA Shelter Table, portable, red diamond pattern, black frame



238H | EXTRA HEAVY-DUTY ADA SHELTER TABLE 

- Available in 10' length with 4 frames (ADA Center Access) or 12' length with 3 frames (ADA end access)
- ADA accessible
- Thermoplastic finish with powder coated frame
- 2-3/8" O.D. all MIG welded frame
- Features walk-through design
- 1" O.D. brace
- All stainless steel hardware
- Portable and/or surface mount
- See page 99 for color options and 96 for patterns

10 FOOT, 4-FRAME	12 FOOT, 3-FRAME
238H-4-V10	238H-3-V12
238H-4-P10	238H-3-P12
238H-4-FV (frame only)	238H-3-FV (frame only)

TABLES



158-V8 8' Heavy-Duty Rectangular Table, green diamond pattern, black frame

158 | HEAVY-DUTY RECTANGULAR TABLE

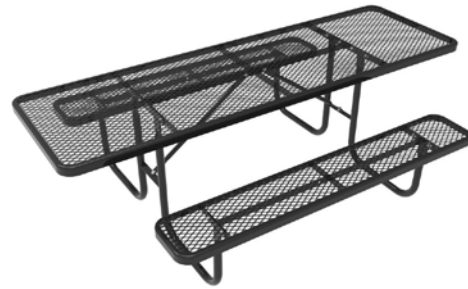
- 4', 6', and 8' lengths with walk-through design
- Thermoplastic finish with powder coated frame
- 1-5/8" O.D. all MIG welded frame
- 1" O.D. brace
- All stainless steel hardware
- Portable and/or surface mount
- See page 99 for color options and 96 for patterns

4 FOOT	6 FOOT	8 FOOT
158-V4	158-V6	158-V8
158-P4	158-VR6	158-VR8
—	158-P6	158-P8
—	158-PR6	158-PR8
—	158-FV (frame only)	158-FV (frame only)



158-V8 8' Heavy-Duty Rectangular Table, ultra blue diamond pattern, black frame

Great for outdoor classrooms!



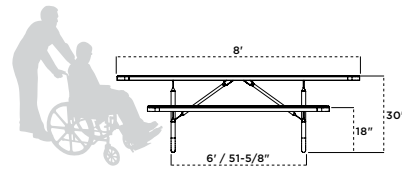
158H-V8 8' Heavy-Duty Rectangular Table, red diamond pattern, black frame

158H | HEAVY-DUTY 8' DOUBLE SIDED ADA ACCESSIBLE TABLE 

- Available in an 8' ADA accessible option with double-sided handicap accessibility
- Thermoplastic finish with powder coated frame
- 1-5/8" O.D. all MIG welded frame
- 1" O.D. brace
- All stainless steel hardware
- Portable and/or surface mount
- See page 99 for color options and 96 for patterns

ADA DOUBLE SIDED

158H-V8
158H-VR8
158H-P8
158-PR8
158-FV (frame only)



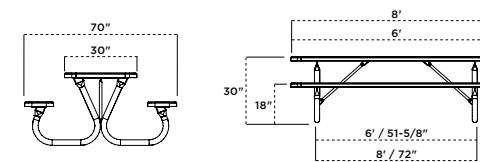
BT238-V6 6' Extra Heavy-Duty Bolt-thru Rectangular Table, green diamond pattern, black frame

BT238 | EXTRA HEAVY-DUTY BOLT-THRU

- Available in 6' and 8' lengths
- Thermoplastic finish with powder coated frame
- 2-3/8" O.D. all bolt together walk-through frame
- 1" O.D. brace
- All stainless steel hardware
- Portable and/or surface mount
- See page 99 for color options and 96 for patterns

6 FOOT 8 FOOT

BT238-V6	BT238-V8
BT238-VR6	BT238-VR8
BT238-P6	BT238-P8
BT238-PR6	BT238-PR8
BT238-FV (frame only)	BT238-FV (frame only)



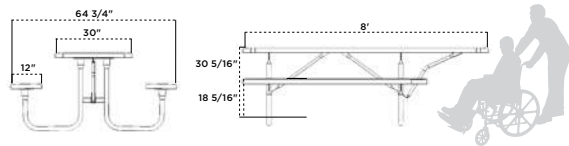
158HS-V8 8' Heavy-Duty Single Sided ADA Accessible Table, red diamond pattern, black frame

158HS | HEAVY-DUTY 8' SINGLE SIDED ADA ACCESSIBLE TABLE 

- Available in an 8' ADA accessible option with single-sided handicap accessibility
- Thermoplastic finish with powder coated frame
- 1-5/8" O.D. bolt together frame
- 1" O.D. brace
- All stainless steel hardware
- Portable and/or surface mount
- See page 99 for color options and 96 for patterns

ADA SINGLE SIDED

158HS-V8
158HS-VR8
158HS-P8
158HS-PR8
158-FV (frame only)



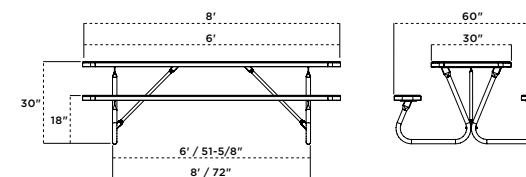
BT158-V6 6' Heavy-Duty Bolt-Thru Rectangular Table, green diamond pattern, black frame

BT158 | HEAVY-DUTY BOLT-THRU TABLE

- Available in 6' and 8' lengths
- Thermoplastic finish with powder coated frame
- 1-5/8" O.D. bolt together frame
- 1" O.D. brace
- All stainless steel hardware
- Portable and/or surface mount
- See page 99 for color options and 96 for patterns

6 FOOT 8 FOOT

BT158-V6	BT158-V8
BT158-VR6	BT158-VR8
BT158-P6	BT158-P8
BT158-PR6	BT158-PR8
BT158-FV (frame only)	BT158-FV (frame only)

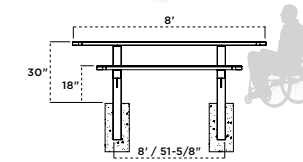




238H-V8 8' Extra Heavy-Duty Bolt-Thru Rectangular Table, green diamond pattern, black frame



347-P6 6' Rectangular Dual Pedestal Table, green perforated pattern, black frame



347 | RECTANGULAR DUAL PEDESTAL

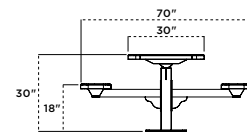
- Available in 6' and 8' lengths with ADA accessibility (8' inground mount only)
- Thermoplastic top and seats with powder coated frame
- 4" x 4" square all MIG welded frame and support arms
- All stainless steel hardware
- Inground (S) or surface mount (SM)
- See page 99 for color options and 96 for patterns

6 FOOT	8 FOOT	ADA 8 FOOT
347-V6	347-V8	347H-V8
347-P6	347-P8	347H-P8
347-VR6	347-VR8	347H-VR8
347-PR6	347-PR8	347H-PR8

337 | HEAVY-DUTY RECTANGULAR SINGLE PEDESTAL TABLE



337SM-P6 6' Heavy-Duty Rectangular Single Pedestal Table, surface mount, brown perforated pattern, black frame

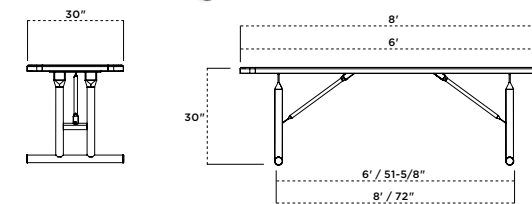


- Available in 4' and 6' lengths with ADA accessibility
- Thermoplastic finish with powder coated frame
- 4" x 4" square post frame with 3" x 3" square support arms
- All MIG welded frame
- All stainless steel hardware
- Inground (S) or surface mount (SM)
- See page 99 for color options and 96 for patterns

4 FOOT	6 FOOT
337-V4	337-V6
337-P4	337-VR6
—	337-P6
—	337-PR6



238U-V6 6' Utility Table, portable, red diamond pattern, black frame



238U | UTILITY TABLE

Utility Tables have an easy access design and are ideal for any park or restaurant.

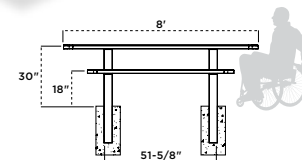
- Available in 6' and 8' lengths with ADA accessibility
- Thermoplastic finish with powder coated frame
- 2-3/8" O.D. all MIG welded frame
- 1" O.D. brace
- All stainless steel hardware
- Portable only
- See page 99 for color options and 96 for patterns

6 FOOT	8 FOOT
238U-V6	238U-V8
238U-VR6	238U-VR8
238U-P6	238U-P8
238U-PR6	238U-PR8

349 | MULTI PEDESTAL TABLE



349S-V6 6' Multi Pedestal Table, inground, ultra blue diamond pattern, black frame



- Available in 6', and 8' lengths with ADA accessibility (8' only)
- Thermoplastic finish with powder coated frame
- 4" square post all MIG welded frame with walk-through design
- All stainless steel hardware
- Inground (S) or surface mount (SM)
- See page 99 for color options and 96 for patterns

6 FOOT	8 FOOT	ADA 8 FOOT
349-V6	349-V8	349H-V8
349-P6	349-P8	349H-P8
349-VR6	349-VR8	349H-VR8
349-PR6	349-PR8	349H-PR8



349SU-V8 8' Utility Table, inground mount, blue diamond pattern, black frame

349U | MULTI PEDESTAL UTILITY TABLE

Utility Tables have an easy access design and are ideal for any park or restaurant.

- Available in 6' and 8' lengths with ADA accessibility
- Thermoplastic finish with powder coated frame
- 4" square post all MIG welded frame with walk-through design
- All stainless steel hardware
- Inground (S) or surface mount (SM)
- See page 99 for color options and 96 for patterns

6 FOOT	8 FOOT
349U-V6	349U-V8
349U-VR6	349U-VR8
349U-P6	349U-P8
349U-PR6	349U-PR8



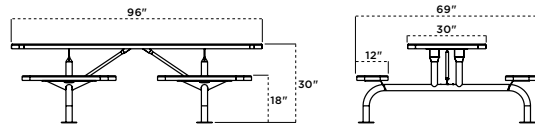
369S-RDV Round Span Leg Table, red diamond pattern, black frame



501S-P 1 Seat Canteen Table, red perforated pattern, red frame
504S-P 4 Seat Canteen Table, red perforated pattern, red frame



239SM-V8 8' Rectangle Span Leg Table, green diamond pattern, black frame



239 | RECTANGULAR SPAN LEG TABLE

- Span Leg design allows additional legroom and easy clean-up access, ideal for outdoor eating areas
- Available in 8' only
- Thermoplastic finish with powder coated frame
- Frame is made of 2 3/8" O.D. powder coated steel tubing
- All MIG welded frame
- Inground (S) or surface mount (SM)
- Cover plates are available in sets of 2, sold separately
- Pattern options: perforated, perforated rolled, diamond, diamond rolled
- See page 99 for color options

RECTANGLE TABLE

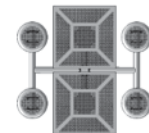
- 239-V8
- 239-P8



501S-P Canteen Table, red perforated pattern, red frame



2 SEAT



4 SEAT

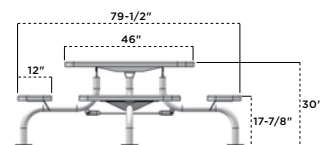
501 | CANTEEN TABLE

- Single pedestal design allows for easy clean-up access, ideal for outdoor eating areas
- Available in multiple sizes with 1, 2, and 4-seat options
- Thermoplastic finish with powder coated frame
- Inground (S) or surface mount (SM)
- Pattern: perforated only
- See page 99 for color options

1 SEAT	2 SEAT	4 SEAT
501-P	502-P	504-P



369SM-V Square Span Leg Table, black diamond pattern, black frame



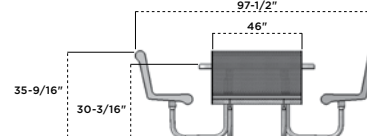
369 | SPAN LEG TABLE

- Span Leg design allows additional legroom and easy clean-up access, ideal for outdoor eating areas
- Frame is made of 2 3/8" O.D. powder coated steel tubing
- Thermoplastic finish with powder coated frame
- All MIG welded frame
- Inground (S) or surface mount (SM)
- ADA accessible option available
- Cover plates are available in sets of 2, sold separately
- Pattern options: perforated, diamond, perforated rolled, diamond rolled
- Available in square, round, or octagon shapes
- See page 99 for color options

ROUND TABLE	OCTAGON TABLE	SQUARE TABLE	3-SEAT SQUARE TABLE
369-RDV	369-OV	369-V	369H-V
369-RDP	369-OP	369-P	369H-P
369-RDVR	369-OVR	369-VR	369H-VR
369-RDPR	369-OPR	369-PR	369H-PR



358-VC 46" Square Capri Seating Table, green diamond pattern, green frame



358 | CAPRI SEATING TABLE

- 46" square or octagon table top with a standard 1-9/16" dia. umbrella hole
- Thermoplastic finish with powder coated frame
- 1-5/8" O.D. all MIG welded frame with walk-through design
- All stainless steel hardware
- Portable and/or surface mount
- Seating pattern options: perforated, diamond
- See page 99 for color options

SQUARE	OCTAGON	SQUARE 3-SEAT
358-VC	358-OVC	358H-VC
358-PC	358-OPC	358H-PC



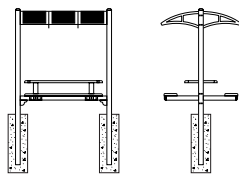
346SM-V6 6' Mall Table, inground, green diamond pattern, black frame



230-RDPC-46 46" Round Contour Table, brown perforated pattern, brown frame



320-P6 6' Canopy Table, inground, ultra blue perforated pattern, black frame



320 | CANOPY TABLE

- 6' lengths available with canopy
- Thermoplastic finish with powder coated frame
- 4" x 4" square all MIG welded frame and support arms
- Canopy offers protection from the sun
- All stainless steel hardware
- Inground mount only
- Pattern options: perforated, diamond
- See page 99 for color options

TABLE (320)

320-V6
320-P6

See pg. 32 for matching bench



338SM-RDV 46" Round Single Pedestal Table, surface mount, red diamond pattern, black frame



338SH2-P

338SM-P

338 | 46" SINGLE PEDESTAL TABLE 

- 46" square, octagon, or round top table with standard 1-9/16" I.D. umbrella hole
- Thermoplastic finish with powder coated frame
- 4" x 4" square post frame with 2-7/8" O.D. round support arms
- All stainless steel hardware
- Inground (S) or surface mount (SM)
- ADA accessible option available add with inground mount only
- See page 99 for color options and 96 for patterns

SQUARE	OCTAGON	ROUND	ADA DOUBLE-SIDED	ADA SINGLE-SIDED
338-V	338-OV	338-RDV	338H2-add (H2)	338H3-add (H3)
338-P	338-OP	338-RDP		
338-VR	338-OVR			
338-PR	338-OPR			



346SM-V6 6' Mall Table, surface mount, green diamond pattern, black frame

346 | MALL TABLE

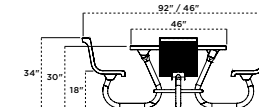
- 6' and 8' lengths available
- Features a contemporary design with a robust build
- Thermoplastic finish with powder coated frame
- 4" x 4" x 11 ga structural steel tubing
- Inground (S) or surface mount (SM)
- Pattern options: perforated, diamond
- See page 99 for color options

6 FOOT	8 FOOT
346-V6	346-V8
346-P6	346-P8

See pg. 29 for matching bench



230-RDPC-46 46" Round Contour Table, brown perforated pattern, brown frame



230 | ROUND CONTOUR TABLE

- 46" table top with a standard 1-9/16" dia. umbrella hole
- Thermoplastic finish with powder coated frame
- 2-3/8" O.D. all bolt together walk-through frame
- All stainless steel hardware
- Portable and/or surface mount
- See page 99 for color options and 96 for patterns

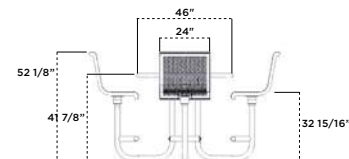
46" TABLE	46" 3-SEAT TABLE
230-RDVC46	230H-RDVC46
230-RDPC46	230H-RDPC46



365-RDP 46" Bistro Table blue perforated pattern, black frame



365-RDP 46" Bistro Table black perforated pattern, black frame



365 | BISTRO TABLE

- 46" round table top featuring swivel seats with 180° rotation
- Standard umbrella hole
- Ergonomic foot rest
- 2-3/8" O.D. all MIG welded frame
- Portable and/or surface mount
- Thermoplastic coated with powder coated frame
- Stainless steel and zinc coated hardware fasteners
- Pattern options: perforated, diamond
- See page 99 for color options

BISTRO TABLE

- 365-RDV
- 365-RDP



956-V Tall Food Court Chairs, green diamond pattern, green frame



953-V Low Food Court Chairs, green diamond pattern, black frame

953/956 | TALL AND STANDARD FOOD COURT CHAIRS

- 30" tall chair with 18" wide contour seat
- Thermoplastic finish with powder coated frame
- 1-5/16" O.D. all MIG welded
- All stainless steel hardware
- Portable only
- Can be used with the 42" tall 360/361 tables
- 18" contour seat
- Thermoplastic finish with powder coated frame
- 1-5/16" O.D. all MIG welded arched support legs and arms
- All stainless steel hardware
- Portable only
- Can be used with the 30" tall 360L/361L tables
- See page 99 for color options and 98 for patterns

30" CHAIR	18" CHAIR
956-V	953-V
956-P	953-P
956-FB	953-FB
956-W	953-W
956-S	953-S

360/360L | PEDESTAL FOOD COURT TABLE

- 36" table top with 42" high frame or optional low (L) 30" frame
- Thermoplastic finish with powder coated frame
- 3-1/2" O.D. all MIG welded – portable (P)
- 3" Square all MIG welded – inground (S) or surface mount (SM)
- All stainless steel hardware
- Portable standard (P) and with round post, or surface mount (SM) and Inground (S) with square post
- Can be used with the 956/953 food court chairs
- Umbrella hole not available
- See page 99 for color options and 98 for patterns



360P-RDSD Round Tall Food Court Table, portable, green solid top, black frame

42" TALL	SQUARE	ROUND	30" LOW	SQUARE	ROUND
	360-V	360-RDV		360L-V	360L-RDV
	360-P	360-RDP		360L-P	360L-RDP
	360-SD	360-RDSD		360L-SD	360L-RDSD

362 | ULTRA BAR HEIGHT TABLE

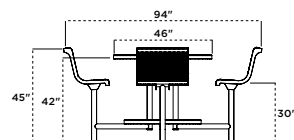
- 46" table top with a standard 1-9/16" diameter umbrella hole
- Thermoplastic finish with powder coated frame
- 2-3/8" O.D. all MIG welded frame
- Cover plates available
- All stainless steel hardware
- Inground (S) or Surface Mount (SM)
- Pattern options: perforated, diamond
- See page 99 for color options

46" ROUND TABLE

- 362-RDV
- 362-RDP



362SM-RDV 46" Ultra Bar Height Table, surface mount, ultra blue diamond pattern, ultra blue frame



361L-RDV Low Round Food Court Table, portable, green diamond pattern, black frame

361 | FOOD COURT TABLE

- 36" table top with 42" high frame or optional low (L) 30" frame
- 1-9/16" diameter umbrella hole
- Thermoplastic finish with powder coated frame
- 1-5/8" O.D. all MIG welded (portable)
- All stainless steel hardware
- Portable only
- Can be used with the 956/953 food court chairs
- Pattern options: perforated, diamond
- See page 99 for color options

42" TALL	SQUARE	ROUND	30" LOW	SQUARE	ROUND
	361-V	361-RDV		361L-V	361L-RDV
	361-P	361-RDP		361L-P	361L-RDP
	361-SD	361-RDSD		361L-SD	361L-RDSD



ULTRACOAT COLLECTION
RECEPTACLES

PR-32 Metal Trash Receptacle, blue perforated pattern with RT-32 Round Top Lid and PL-32 Liner



JK-36FT Jackson Receptacle, green vertical slat with matching flat top lid

JK-36 | JACKSON RECEPTACLE

- 36 gallon capacity
- Only available in powder coated finish
- 1/8" x 2" steel flat bar
- All MIG welded frame
- Portable and/or surface mount
- Lid and liner included
- See page 99 for color options

FLAT TOP	ASH URN	RAIN BONNET
JK-36FT	JK-36AU	JK-36RB



SD-36FT Swing Door Receptacle, vertical slat, blue with matching flat top lid

SD-36FT | SWING DOOR RECEPTACLE

- 36 gallon capacity
- Thermoplastic finish
- Slat design with flared top
- All MIG welded unit
- Lid and liner included
- Featuring easy access swing door
- Portable and/or surface mount

FLAT TOP	ASH URN	RAIN BONNET
SD-36FT	SD-36AU	SD-36RB



EX-32 Metal Trash Receptacle, blue diamond pattern with FTR-32-08 Flat Top Lid and PL-32 Liner

W-32 Metal Trash Receptacle, red wave pattern with RT-32 Round Dome-Top Lid and PL-32 Liner

32/55 | METAL TRASH RECEPTACLES

- Available in 32 gallon and 55 gallon capacities
- Thermoplastic finish
- All MIG welded unit
- Portable with mounting kit sold separately
- Lids and liners are sold separately
- See page 48 for lids and liners
- See page 99 for color options and 98 for patterns

32 GALLON	55 GALLON
EX-32	EX-55
PR-32	PR-55
FB-32	FB-55
W-32	W-55
S-32	S-55



PR-32RE Standard Recycled Logo Receptacle, ultra blue perforated pattern with FTR-32-08 Flat Top Lid and PL-32 Liner

32RE | STANDARD RECYCLE LOGO RECEPTACLE

- 32 gallon capacity
- Thermoplastic finish
- All MIG welded unit
- Portable with mounting kit sold separately
- Lid and liner sold separately
- Three recycling emblems to be visible from all angles
- See page 48 for lids and liners
- Diamond (EX) and perforated (PR) patterns only
- See page 99 for color options

32 GALLON
PR-32RE
EX-32RE



PR-32-CL Custom Metal Trash Receptacle, perforated pattern, black with optional color backing, RBR-32-08 Rain Bonnet Lid and PL-32 Liner

You can customize most receptacles.

See page 54 for more information.



SM KIT Surface Mounting Kit



IG KIT Inground Mounting Kit

RECEPTACLE MOUNTING KITS

All trash receptacles are portable and can be converted into either inground (IG) or surface mount (SM). Kits fit 32, 36, and 55 gallon receptacles. Sold separately

- 2-3/8" O.D. all MIG welded pipe
- Powder coated black finish

SIZE	INGROUND	SURFACE
32 GAL	IG KIT	SM KIT
36 GAL	IG KIT	SM KIT
55 GAL	IG KIT	SM KIT

METAL RECEPTACLE LIDS

- Fits our 32 or 55 gallon receptacles
- 8" opening (08) standard
- Optional 14" opening (14) available
- 23-3/4" I.D. opening (32 gallon tops)
- 1/2" diameter rod (AUR & RBR)
- All MIG welded frame (AUR & RBR)



FTR-32-08

FTR | FLAT TOP

- 24"w (26-3/4" for 55 gal.)
- Spun metal lid
- Thermoplastic lids required on thermoplastic receptacles
- Powder coated lids required on recycled plastic receptacles
- See page 99 for color options

SIZE	8" OPENING	14" OPENING
32 GAL	FTR-32-08	FTR-32-14
55 GAL	FTR-55-08	FTR-55-14



RT-32

RT-32 | ROUND TOP

- 11-3/4"h x 24-7/8"w
- 32 gallon 24" I.D.
- Heavy duty polyethylene w/ swing door
- Only available on thermoplastic receptacles
- Comes standard as black (also available in red, gray, or blue)

32 GAL	RT-32
--------	-------



AUR-32-08

AUR | ASH URN

- 13"h x 24"w (26-3/4" for 55 gal.)
- 20 gauge spun metal bonnet and ash urn
- Thermoplastic lids required on thermoplastic receptacles
- Powder coated lids required on recycled plastic receptacles
- See page 99 for color options

SIZE	8" OPENING	14" OPENING
32 GAL	AUR-32-08	AUR-32-14
55 GAL	AUR-55-08	AUR-55-14



DT-32

DT-32 | DOME TOP

- 17"h x 24-3/8"w for 32 gal.
- 18"h x 28-1/4"w for 55 gal.
- 32 gal. 24" I.D. and 55 gal. 27" I.D.
- Heavy duty polyethylene w/ swing door
- Only available on thermoplastic receptacles
- Black only

32 GAL	DT-32	55 GAL	DT-55
--------	-------	--------	-------



RBR-32-08

RBR | RAIN BONNET

- 13"h x 24"w (26-3/4" for 55 gal.)
- 20 gauge spun metal bonnet
- Thermoplastic lids required on thermoplastic receptacles
- Powder coated lids required on recycled plastic receptacles
- See page 99 for color options

SIZE	8" OPENING	14" OPENING
32 GAL	RBR-32-08	RBR-32-14
55 GAL	RBR-55-08	RBR-55-14

See page 51 for receptacle mounting kits



PL | RECEPTACLE LINER

- Liner fits most of our 32, 36, and 55 gallon trash receptacles.
- 32-Gallon measures 21-7/8" wide x 27-1/2" tall
- 55-Gallon measures 23-3/8" wide x 31-3/8" tall
- Heavy-Duty Plastic
- Sold separately unless noted

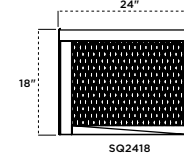
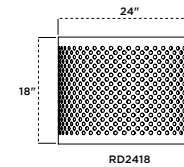
32 GALLON	55 GALLON
PL-32	PL-55



CABLE | 18" CABLE

Cable is sold separately. **Specify cable when ordering lid and receptacle**

- Attachment is used to keep the lid and trash receptacle permanently connected
- 3/32" diameter braided cable



RD2418/SQ2418 | PLANTER

- 24" wide x 18" high planters
- Thermoplastic finish
- All MIG welded frame
- Diamond (V) or Perforated (P) design
- Portable and/or surface mount
- 01-05-0212 liner sold separately
- See page 99 for color options

SQUARE	ROUND
SQ2418-V	RD2418-V
SQ2418-P	RD2418-P

RD2418-P Round Planter, black perforated pattern



RD2418-LX | LEXINGTON PLANTER

- 24" wide x 18" high planters
- Powder coated finish
- 1/8" x 2" steel flat bar
- All MIG welded frame
- Portable and/or surface mount
- Inground mounting kit available - sold separately
- 01-05-0212 liner sold separately
- See page 99 for color options

RD2418-LX Lexington Planter, brown vertical slat pattern



12/12AT | ASH TRAY & ASH TRAY/TRASH COMBO

- 12 Series Ash Tray and 12AT Ash Tray/Trash combination.
- 12-1/2" wide x 24" high
- All MIG welded
- Portable and/or surface mount
- Liner included with EX-12AT and PR-12AT only
- See page 99 for color options

STYLE	ASH TRAY	ASH TRAY/TRASH COMBO
Diamond Pattern	EX-12	EX-12AT
Perforated Pattern	PR-12	PR-12AT

PR-12AT Ash Tray/ Trash Combo, green perforated pattern

CUSTOMIZATION AND PERSONALIZATION

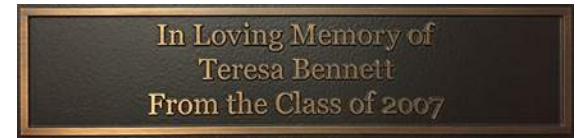


PR-55-CL Custom Metal Trash Receptacle, black perforated pattern with optional ultra silver backing, shown with FTR-55-08 Flat Top Lid, and PL-55 Liner

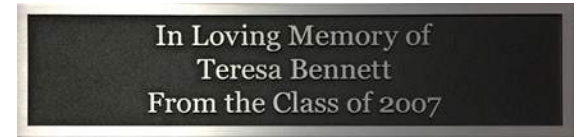
MEMORIAL BENCHES & PLAQUES

UltraSite's Memorial Benches are a unique way to honor your loved one by providing a place of comfort for your community.

The Traditional Plaque features a brushed bronze or choose our Modern Plaque with a brushed aluminum finish.



Traditional Plaque

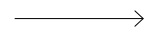
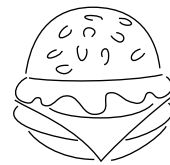


Modern Plaque

LOGOS & LETTERING

Include your logo, emblem, or insignia on most UltraSite® classic furnishings.

- Smooth cut edges
- Artwork is converted to an exact replica
- Customized typeface and style
- 2D proof provided for approval



974-S6-CAPQ 6' Wilmington Colon Cancer Memorial Bench, Modern Plaque Option

974CA | WILMINGTON MEMORIAL BENCH

- Available in 6' length
- Available with or without plaque option
- Portable and/or surface mount
- Powder coated finish, contact us to learn more

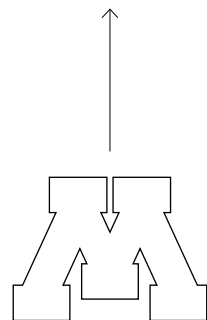
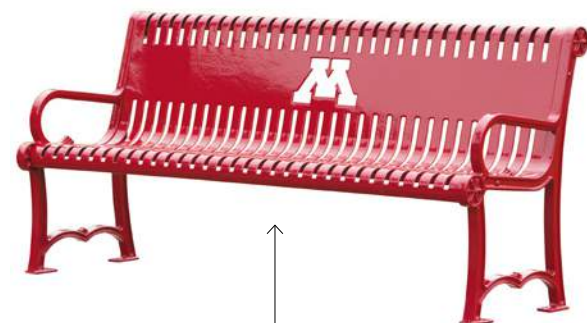
WITH PLAQUE

974-S6-CAPQ

WITHOUT PLAQUE

974-S6-CA

BLUFF CITY



96-S6-CAPQ 6' Jackson Breast Cancer Awareness Bench, Traditional Plaque Option

96CA | JACKSON MEMORIAL BENCH

- Available in 6' length
- Available with or without plaque option
- Portable and/or surface mount
- Powder coated finish, contact us to learn more

WITH PLAQUE

96-S6-CAPQ

WITHOUT PLAQUE

96-S6-CA



**ULTRACOAT
EARLYCHILDHOOD**

CREATE YOUR VERY OWN CUSTOM BUDDY BENCH
FOLLOWING OUR EASY 4 STEP PROCESS.

Please give us a call if you have any questions and a customer service representative will be happy to assist you. 800-458-5872

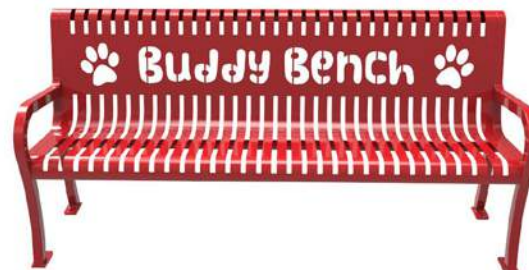
1 CHOOSE YOUR BUDDY BENCH



NEW 940P-P6-BBCL 6' Buddy Bench, portable, blue perforated game pattern, black frame

940 | BUDDY BENCH

- Available in 6' or 8'
- Diamond or **NEW** Perforated Game Pattern (featuring tic-tac-toe and chess/checkers perforated seat designs)
- Portable (P), inground (S), or surface mount (SM)
- Thermoplastic finish (seat and back) with powder coated frame
- 1" O.D. Brace (portable frame only)



954-CL 6' Lexington Buddy Bench, red slat pattern

954 | LEXINGTON BUDDY BENCH

- Available in 6' or 8'
- Slat pattern
- Portable and/or surface mount
- 1-1/2" thick cast aluminum frame
- Thermoplastic finish

BUILD YOUR OWN BUDDY BENCH

*Don't see what you're looking for?
Call us for a custom quote!*

2 CHOOSE YOUR LETTERING

- | | |
|----------------|----------------|
| A. Buddy Bench | D. BUDDY BENCH |
| B. BUDDY BENCH | E. Buddy Bench |
| C. Buddy Bench | F. Buddy Bench |

3 CHOOSE YOUR ICON



SUN



TREE



BALLOONS



FRIENDS



PAW PRINT

4 CHOOSE YOUR COLOR



ULTRA BLUE



BURGUNDY



GREEN



BEIGE



BLUE



RED



BROWN



BLACK



ULTRA BLUE



BURGUNDY



GREEN



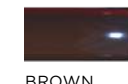
BEIGE



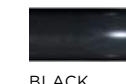
BLUE



RED



BROWN



BLACK



YELLOW



PURPLE



DARK GREY



MATTE BLACK



WHITE



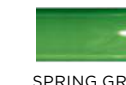
ORANGE

NEW



SKY BLUE

NEW



SPRING GREEN

NEW

**ULTRACOAT®
THERMOPLASTIC COLORS**

- Superior Adhesion
- Resistance to Cutting and Vandalism
- No Runs or Drips
- Smooth Finish Prevents Mold and Mildew
- Easily Repaired
- UV Protection
- Environmentally Friendly

**STANDARD
POWDER COAT COLORS**

The steel framework used in the UltraCoat® product line delivers one of the industry's most durable protective coatings. UltraSite® further enhances the durability by applying a superior powder coated finish. The process provides three layers of protection from harmful environmental elements, with very little maintenance.



940PPS-V3 3' Portable Preschool Bench, red diamond pattern, black frame

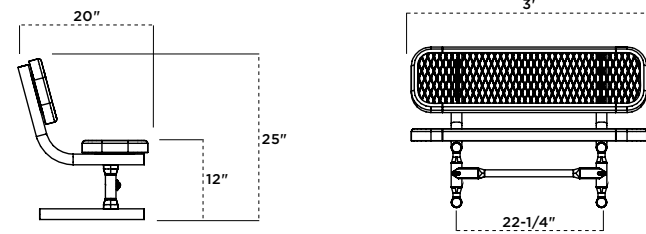
940PPS | 3' PORTABLE PRESCHOOL BENCH

- 3' length with 12" high seating
- Thermoplastic finish and powder coated frame
- 1-5/8" O.D. all MIG welded pipe
- 1" O.D. brace (portable frame only)
- All stainless steel hardware
- Portable (P) or inground (S)
- See page 99 for color options and 98 for seating patterns

PRESCHOOL

940PPS-V3

940PPS-P3



358PS-PLP Learning Table with Perforated Pattern



350PS-P Preschool Table with solid table top design and perforated seating

350PS | PORTABLE PRESCHOOL TABLE

- 36" table top with 12" high seating
- 1-5/8" O.D. all MIG welded pipe with 1" O.D. brace
- Walk through design
- All stainless steel hardware

46" TABLE

SQUARE
Solid Top

350PS-P

350PS-V



158PS-V6 6' Rectangular Preschool Table, green diamond pattern, black frame

158PS | RECTANGULAR PRESCHOOL TABLE

- Available in 4', 6', and 8' lengths with 20" high top and 12" high seating
- Thermoplastic finish with powder coated frame
- 1-5/8" O.D. all MIG welded pipe with 1" O.D. brace
- Walk through design
- All stainless steel hardware
- Portable
- Pattern options: perforated, diamond
- See page 99 for color options

4 FOOT

158PS-V4

158PS-P4

6 FOOT

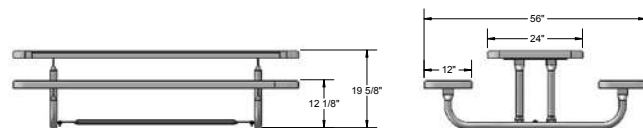
158PS-V6

158PS-P6

8 FOOT

158PS-V8

158PS-P8



358PS-PLP Learning Table, perforated pattern

358PS | PORTABLE PRESCHOOL TABLE

- 46" table top with 12" high seating
- 1-5/8" O.D. all MIG welded pipe with 1" O.D. brace
- Walk through design
- All stainless steel hardware
- Also available with learning table top that includes alphabet and numbers 0-9 to compliment your early childhood setting

46" TABLE

SQUARE

358PS-P

358PS-V

358PS-VR

358PS-PR

OCTAGON

358PS-OP

358PS-OV

358PS-OVR

358PS-OPR

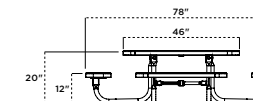
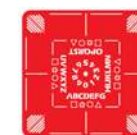
ROUND

358PS-RDP

358PS-RDV

LEARNING TABLE

358PS-PLP



NATURAL COLLECTION



 100% Recycled Plastic Planks

982-CDR8 8' Recycled Bench with Back, surface mount, 2" x 4" cedar planks, galvanized frame



982-GRY46 6' Recycled Bench with Back, 4" x 4" gray recycled plastic planks, black frame



952SM-GRN46 6' Recycled Bench without Back, surface mount, 4" x 4" green recycled plastic planks, black frame

952 | RECYCLED BENCH WITHOUT BACK

- Available in 6' or 8' lengths
- Available with 2" x 4", 3" x 4", or 4" x 4" recycled plastic planks with powder coated or hot-dip galvanized frame
- Also available with 2" x 4" wood planks
- 3" x 3" square all MIG welded frame
- All zinc plated hardware
- Surface mount (SM) or inground mount (S)
- See page 99 for frame color options and 97 for plank color options

6 FOOT	2" x 4"	3" x 4"	4" x 4"	8 FOOT	2" x 4"	3" x 4"	4" x 4"
	952-GRY6	952-GRY36	952-GRY46		952-GRY8	952-GRY38	952-GRY48
952-CDR6	952-CDR36	952-CDR46	952-CDR8	952-CDR38	952-CDR48		
952-BRN6	952-BRN36	952-BRN46	952-BRN8	952-BRN38	952-BRN48		
952-GRN6	952-GRN36	952-GRN46	952-GRN8	952-GRN38	952-GRN48		



982SM-GRN46 6' Recycled Bench with Back, surface mount, 4" x 4" green recycled plastic planks, black frame

982 | RECYCLED BENCH WITH BACK

- Available in 6' or 8' lengths
- Available with 2" x 4", 3" x 4", or 4" x 4" recycled plastic planks with powder coated finish or hot dip galvanized frame
- Also available with 2" x 4" wood planks
- 3" x 3" square all MIG welded frame
- All zinc plated hardware
- Surface mount (SM) or inground mount (S)
- See page 97 for plank color options

6 FOOT	2" x 4"	3" x 4"	4" x 4"	8 FOOT	2" x 4"	3" x 4"	4" x 4"
	982-GRY6	982-GRY36	982-GRY46		982-GRY8	982-GRY38	982-GRY48
982-CDR6	982-CDR36	982-CDR46	982-CDR8	982-CDR38	982-CDR48		
982-BRN6	982-BRN36	982-BRN46	982-BRN8	982-BRN38	982-BRN48		
982-GRN6	982-GRN36	982-GRN46	982-GRN8	982-GRN38	982-GRN48		



940-CDR16 6' Extra Heavy-Duty Bench, portable, 2" x 10" cedar recycled plastic planks, black frame
TR-32-CDR Round Receptacle, 2" x 4" cedar recycled planks, with FTR-32-08 Flat Top Lid

940 | EXTRA HEAVY-DUTY BENCH

- Available in 6' or 8' lengths
- Standard 2" x 4" planks with the option of 2" x 10" planks with powder coated or hot-dip galvanized frame
- Available with recycled plastic lumber or wood planks
- All MIG welded frame
- Brace is 1" O.D. pipe
- All Zinc plated hardware
- Portable (P), inground (S), or surface mount (SM)
- See page 99 for frame color options and 97 for plank color options

6 FOOT	2" x 4"	2" x 10"
	940-U6	940-U16
	940-PT6	940-PT16
	940-T6	940-T16
	940-GRY6	940-GRY16
	940-CDR6	940-CDR16
	940-BRN6	940-BRN16
	940-GRN6	940-GRN16
	940-F6	(frame only)

8 FOOT	2" x 4"	2" x 10"
	940-U8	940-U18
	940-PT8	940-PT18
	940-T8	940-T18
	940-GRY8	940-GRY18
	940-CDR8	940-CDR18
	940-BRN8	940-BRN18
	940-GRN8	940-GRN18
	940-F8	(frame only)



940P-GRN6 6' Extra Heavy Duty Bench, portable, 2"x4" green recycled plastic planks, galvanized frame

965 | DOUBLE-POST CONTOUR PARK BENCH

- Available in 6' or 8' lengths
- Standard 2" x 4" planks with 8-slat contoured seating
- Available with recycled plastic lumber or wood planks
- All MIG welded frame made of 2-3/8" O.D. pipe
- Frame can be powder coated or hot-dip galvanized
- Zinc plated hardware
- Inground (S), surface mount (SM) or Portable (P)
- See page 99 for frame color options and 97 for plank color options

6 FOOT	8 FOOT
965-U6	965-U8
965-PT6	965-PT8
965-T6	965-T8
965-GRY6	965-GRY8
965-CDR6	965-CDR8
965-BRN6	965-BRN8
965-GRN6	965-GRN8



965SM-BRN6 6' Double-Post Contour Park Bench, surface mount, brown recycled plastic planks, brown frame



975SM-PT6 6' Single-Post Contour Park Bench, surface mount, pressure treated wood planks, brown frame

975 | SINGLE-POST CONTOUR PARK BENCH

- Available in 6' or 8' lengths
- Standard 2" x 4" planks with 8-slat contoured seating
- Available with recycled plastic lumber or wood planks
- All MIG welded frame made of 2-3/8" O.D. pipe
- Frame can be powder coated or hot-dip galvanized
- Zinc plated hardware
- Inground (S) or surface mount (SM)
- See page 99 for frame color options and 97 for plank color options

6 FOOT	8 FOOT
975-U6	975-U8
975-PT6	975-PT8
975-T6	975-T8
975-GRY6	975-GRY8
975-CDR6	975-CDR8
975-BRN6	975-BRN8
975-GRN6	975-GRN8

992 | RECYCLED PLASTIC BENCH WITH TWO PLANTERS

- 6', 2" x 4" Recycled plastic planks with all zinc plated hardware
- Available with 2 planters
- Portable (P)
- See page 97 for plank color options
- Liners sold separately 01-05-0212



992-GRN6 6' Bench without Back, 2 planters, portable, green recycled plastic planks

992-GRY6
992-GDR6
992-BRN6
992-GRN6

993 | RECYCLED PLASTIC BENCH WITH THREE PLANTERS

- 6', 2" x 4" Recycled plastic planks with all zinc plated hardware
- Available with 3 planters
- Portable (P)
- See page 97 for plank color options
- Liners sold separately 01-05-0212



993-GRY6 Two 6' benches, 3 planters, portable, gray recycled plastic planks

993-GRY6
993-GDR6
993-BRN6
993-GRN6



238-T8 8' Extra Heavy-Duty Rectangular Table, Redwood stain planks, portable, galvanized frame

238 | EXTRA HEAVY-DUTY RECTANGULAR TABLE



238-GRN6 6' Extra Heavy-Duty Rectangular Table, green recycled plastic planks, portable, galvanized frame

- Available in 6' or 8' lengths with walk-through design
- 2" x 10" planks
- 2-3/8" O.D. all MIG welded frame with 1-5/16" O.D. brace
- Available with recycled plastic lumber or wood planks
- Frame can be powder coated or hot-dip galvanized
- All galvanized hardware (for wood)
- All zinc plated hardware (for recycled plastic)
- Table has pre-drilled holes for a portable and/or surface mount frame
- See page 99 for frame color options and 97 for plank color options

6 FOOT		8 FOOT		6 FOOT (cont.)		8 FOOT (cont.)	
238-U6	238-U8	238-CDR6	238-CDR8	238-CDR6	238-CDR8	238-GRN6	238-GRN8
238-PT6	238-PT8	238-BRN6	238-BRN8	238-GRN6	238-GRN8	238-F	238-F
238-T6	238-T8	238-GRN6	238-GRN8	238-F (frame only)	238-F (frame only)		
238-GRY6	238-GRY8						

238H | EXTRA HEAVY-DUTY ADA ACCESSIBLE TABLE 



238H-T8 6' Extra Heavy-Duty Rectangular Table, redwood stain planks, portable, galvanized frame

- Available in an 8' ADA accessible option with choice of double-sided (H) or single-sided (HS) accessibility
- Available with recycled plastic lumber or wood planks
- Recycled planks available in Double-Sided (H) only
- Frame can be powder coated or hot-dip galvanized
- All zinc plated hardware (for recycled plastic)
- All galvanized hardware (for wood)
- See page 99 for frame color options and 97 for plank color options

ADA Double-Sided	ADA Single-Sided	ADA Double-Sided	ADA Single-Sided
238H-U8	238HS-U8	238H-GRY8	238HS-GRY8
238H-PT8	238HS-PT8	238H-CDR8	238HS-CDR8
238H-T8	238HS-T8	238H-BRN8	238HS-BRN8
		238H-GRN8	238HS-GRN8



238-3-T10 10' Shelter Table, redwood stain planks, portable, galvanized frame

238-3 | EXTRA HEAVY-DUTY SHELTER TABLE

- Available in 10' and 12' lengths with walk-through design
- 2" x 10" planks
- 2-3/8" O.D. all MIG welded frame
- 1-5/16" O.D. brace
- Frame can be powder coated or hot-dip galvanized
- All galvanized hardware (for wood)
- Portable and/or surface mount
- See page 99 for frame color options and 97 for plank color options

10 FOOT	12 FOOT
238-3-U10	238-3-U12
238-3-PT10	238-3-PT12
238-3-T10	238-3-T12

238H | EXTRA HEAVY-DUTY SHELTER TABLE 



238H-4-PT10 10' ADA Shelter Table, pressure treated planks, portable, brown frame

- Available in 10' and 12' lengths with walk-through design
- Available as 3 (12') or 4 (10') frames
- 2" x 10" planks
- 2-3/8" O.D. all MIG welded frame with 1-5/16" brace
- Frame can be powder coated or hot-dip galvanized
- All galvanized hardware (for wood)
- All zinc plated hardware (for recycled plastic)
- Portable and/or surface mount
- See page 99 for frame color options and 97 for plank color options

10' ADA 4-Frame	12' ADA 3-Frame
238H-4-U10	238H-3-U12
238H-4-PT10	238H-3-PT12
238H-4-T10	238H-3-T12

BT238 | EXTRA HEAVY-DUTY BOLT-THRU TABLE



BT238-BRN6 6' Bolt-Thru Extra Heavy-Duty Rectangular Table, portable, brown recycled planks, galvanized frame

- 6' and 8' lengths
- 2" x 10" planks
- 2-3/8" O.D. bolt-thru frame
- 1-5/16" O.D. brace
- Frame can be powder coated or hot-dip galvanized
- All galvanized hardware (for wood)
- All zinc plated hardware (for recycled plastic)
- Portable and/or surface mount
- See page 99 for frame color options and 97 for plank color options

6 FOOT	8 FOOT
BT238-U6	BT238-U8
BT238-PT6	BT238-PT8
BT238-T6	BT238-T8
BT238-GRY6	BT238-GRY8
BT238-CDR6	BT238-CDR8
BT238-BRN6	BT238-BRN8
BT238-GRN6	BT238-GRN8
BT238-F (frame only)	BT238-F (frame only)



158-GRY6 6' Heavy-Duty Rectangular Table, portable, grey recycled plastic planks, black frame

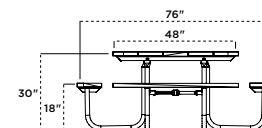
158 | HEAVY-DUTY RECTANGULAR TABLE

- Available in 6' or 8' lengths with walk-through design
- 2" x 10" planks
- 1-5/8" O.D. all MIG welded frame with 1-5/16" O.D. brace
- Frame can be powder coated or hot-dip galvanized
- All galvanized hardware (for wood)
- All zinc plated hardware (for recycled plastic)
- Portable and/or surface mount
- See page 99 for frame color options and 97 for plank color options

6 FOOT	8 FOOT
158-U6	158-U8
158-PT6	158-PT8
158-T6	158-T8
158-GRY6	158-GRY8
158-CDR6	158-CDR8
158-BRN6	158-BRN8
158-GRN6	158-GRN8
158-F (frame only)	158-F (frame only)



358-PT48 4-Seat 48" Square Table, pressure treated planks, galvanized frame



358 | 48" SQUARE TABLE

- 48" table with umbrella hole diameter 1-9/16" I.D.
- 1-5/8" O.D. all bolt together walk-through design
- 1" O.D. brace
- Available with recycled plastic lumber or wood planks
- Frame can be powder coated or hot-dip galvanized
- All galvanized hardware (for wood)
- All zinc plated hardware (for recycled plastic)
- Portable and/or surface mount
- See page 99 for frame color options and 97 for plank color options

358-U48
358-PT48
358-T48
358-GRY48
358-CDR48
358-BRN48
358-GRN48

158H | HEAVY-DUTY 8' ACCESSIBLE TABLE

- Available in an 8' ADA accessible option with choice of single or double-sided accessibility
- Frame can be powder coated or hot-dip galvanized
- See page 99 for frame color options and 97 for plank color options

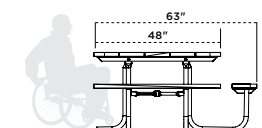


158H-PT8 8' Double-Sided ADA Accessible Table, portable, pressure treated planks, galvanized frame

ADA Double-Sided	ADA Single-Sided
158H-U8	158HS-U8
158H-PT8	158HS-PT8
158H-T8	158HS-T8
158H-GRY8	
158H-CDR8	
158H-BRN8	
158H-GRN8	
158H-F (frame only)	158HS-F (frame only)



338SM-PT48 3-Seat 48" ADA Square Table, cedar recycled plastic planks, black frame



358H | ADA 48" SQUARE TABLE

- 48" table with umbrella hole diameter 1-9/16" I.D.
- ADA accessible with 3-seat
- 1-5/8" O.D. all bolt together walk-through design
- 1" O.D. brace
- Frame can be powder coated or hot-dip galvanized
- All galvanized hardware (for wood)
- All zinc plated hardware (for recycled plastic)
- Portable and/or surface mount
- See page 99 for frame color options and 97 for plank color options

ADA 3-SEAT TABLE
358H-U48
358H-PT48
358H-T48
358H-GRY48
358H-CDR48
358H-BRN48
358H-GRN48
358-F (frame only)

BT158 | HEAVY-DUTY BOLT-THRU TABLE

- Available in 6' and 8' lengths
- 2" x 10" planks
- 1-5/8" O.D. all bolt together walk-through design
- 1-5/16" O.D. brace
- Frame can be powder coated or hot-dip galvanized
- All galvanized hardware (for wood)
- All zinc plated hardware (for recycled plastic)
- Portable and/or surface mount
- See page 99 for frame color options and 97 for plank color options

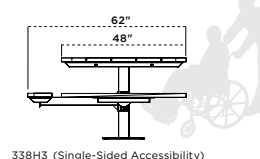
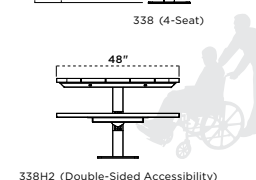
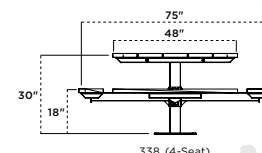


BT158-GRN6 6' Bolt-Thru Heavy-Duty Table, green recycled plastic planks, galvanized frame

6 FOOT	8 FOOT
BT158-U6	BT158-U8
BT158-PT6	BT158-PT8
BT158-T6	BT158-T8
BT158-GRY6	BT158-GRY8
BT158-CDR6	BT158-CDR8
BT158-BRN6	BT158-BRN8
BT158-GRN6	BT158-GRN8
158-F (frame only)	BT158-F (frame only)



338SM-PT48 4-Seat Single Pedestal Table, pressure treated planks, black frame



338/338H | 48" SINGLE PEDESTAL TABLE

- 48" table with umbrella hole diameter 1-9/16" I.D.
- ADA accessible with 2-seat or 3-seat inground option
- 4" x 4" all MIG welded frame with 2-7/8" O.D. round support arms
- Powder coated frame
- All zinc plated hardware
- Inground (S) or surface mount (SM)
- See page 99 for frame color options and 97 for plank color options

4-SEAT	ADA 3-SEAT	ADA 2-SEAT
338-U48	338H3-U48	338H2-U48
338-PT48	338H3-PT48	338H2-PT48
338-T48	338H3-T48	338H2-T48
338-GRY48	338H3-GRY48	338H2-GRY48
338-CDR48	338H3-CDR48	338H2-CDR48
338-BRN48	338H3-BRN48	338H2-BRN48
338-GRN48	338H3-GRN48	338H2-GRN48

TABLES



349SM-GRN6 6' Multi-Pedestal Table, surface mount, green recycled plastic planks, black frame

349/348 | MULTI-PEDESTAL TABLE

- Available in 6', and 8' lengths with ADA double-sided accessibility
- 2" x 10" (349) or 3" x 4" (348) recycled plastic planks
- 4" square post all MIG welded frame with walk-through design
- Powder coated frame
- All galvanized hardware (for wood)
- All zinc plated hardware (for recycled plastic)
- Inground (S) or surface mount (SM)
- See page 99 for frame color options and 97 for plank color options

SERIES 349	6 FOOT	8 FOOT	ADA 8 FOOT
	349-U6	349-U8	349H-U8
	349-PT6	349-PT8	349H-PT8
	349-T6	349-T8	349H-T8
	349-GRY6	349-GRY8	349H-GRY8
	349-CDR6	349-CDR8	349H-CDR8
349-BRN6	349-BRN8	349H-BRN8	
349-GRN6	349-GRN8	349H-GRN8	

SERIES 348	6 FOOT	8 FOOT	ADA 8 FOOT
	348-GRY6	348-GRY8	348H-GRY8
	348-CDR6	348-CDR8	348H-CDR8
	348-BRN6	348-BRN8	348H-BRN8
348-GRN6	348-GRN8	348H-GRN8	

347 | DUAL PEDESTAL RECTANGULAR TABLE

- Available in 6' or 8' lengths with attached seats
- 2" x 10" planks
- Optional 8' ADA version with double-sided accessibility
- 4" x 4" all MIG welded frame
- Powder coated frame
- All zinc plated hardware (for recycled plastic)
- Inground (S) or surface mount (SM)
- See page 99 for frame color options and 97 for plank color options



347-PT6 6' Dual Pedestal Rectangular Table, pressure treated planks, brown frame

6 FOOT	8 FOOT	ADA 8 FOOT
347-U6	347-U8	347H-U8
347-PT6	347-PT8	347H-PT8
347-T6	347-T8	347H-T8
347-GRY6	347-GRY8	347H-GRY8
347-CDR6	347-CDR8	347H-CDR8
347-BRN6	347-BRN8	347H-BRN8
347-GRN6	347-GRN8	347H-GRN8

337 | SINGLE PEDESTAL RECTANGULAR TABLE

- This table is ADA accessible and comes in 4' or 6' lengths
- 4" x 4" square main post with 3" x 3" square arm posts
- 2" x 10" planks
- Powder coated frame
- All galvanized hardware (for wood)
- All zinc plated hardware (for recycled plastic)
- Inground (S) or surface mount (SM)
- See page 99 for frame color options and 97 for plank color options



337-U6 6' Single Pedestal Rectangular Table, untreated planks, black frame

4 FOOT	6 FOOT
337-U4	337-U6
337-PT4	337-PT6
337-T4	337-T6
337-GRY4	337-GRY6
337-CDR4	337-CDR6
337-BRN4	337-BRN6
337-GRN4	337-GRN6



TR-32-CDR Round Receptacle, cedar recycled planks, with RBR-32-08 Rain Bonnet Lid
348S-CDR6 6' Multipedestal Table, cedar recycled plastic planks, black frame

TR-32 | ROUND RECEPTACLE

- 32 gallon capacity
- 34" high with a 26-11/16" diameter
- 2" x 4" planks in wood or recycled plastic
- All zinc plated hardware
- Portable with mounting kit sold separately
- Lid and liner sold separately
- See page 97 for plank color options



TR-32-CDR Round Receptacle, cedar recycled planks, **FTR-32-08** Flat Top Lid

TR-32-U	TR-32-GRY
TR-32-PT	TR-32-CDR
TR-32-T	TR-32-BRN
	TR-32-GRN

TRSQ-32 | SQUARE RECEPTACLE

- 32 gallon capacity
- 34" high and 27" wide
- 2" x 4" planks in wood or recycled plastic
- All zinc plated hardware
- Portable with mounting kit sold separately
- Lid and liner sold separately
- See page 97 for plank color options



TRSQ-32-BRN Square Receptacle, brown recycled planks, **FTR-32-TRSQ** Flat Top Lid

TRSQ-32-U	TRSQ-32-GRY
TRSQ-32-PT	TRSQ-32-CDR
TRSQ-32-T	TRSQ-32-BRN
	TRSQ-32-GRN

TRSQ-20/40/60 | RECYCLING RECEPTACLE

- Available as a single, double or triple recycling receptacle
- 2" x 4" planks in recycled plastic
- All zinc plated hardware
- Lid and liner sold separately
- Portable with mounting kit sold separately
- Choose between: Trash, Cans, Plastic, Paper, or Glass
- See page 97 for plank color options



TRSQ-40-GRN Double Recycling Receptacle, green recycled plastic planks

See pg. 23 for other dual receptacle options

SINGLE RECYCLING RECEPTACLE	DOUBLE RECYCLING RECEPTACLE	TRIPLE RECYCLING RECEPTACLE
TRSQ-20-GRY	TRSQ-40-GRY	TRSQ-60-GRY
TRSQ-20-CDR	TRSQ-40-CDR	TRSQ-60-CDR
TRSQ-20-BRN	TRSQ-40-BRN	TRSQ-60-BRN
TRSQ-20-GRN	TRSQ-40-GRN	TRSQ-60-GRN



RD2418-BRN Round Planter, brown recycled plastic planks
SQ2418-GRN Square Planter, green recycled plastic planks

RD2418/SQ2418 | PLANTER

- 18" high and 26-3/4" wide
- 2" x 4" planks in wood or recycled plastic
- All zinc plated hardware
- Portable with mounting kit sold separately
- See page 97 for plank color options
- 01-05-0212 Liner sold separately

ROUND PLANTER	SQUARE PLANTER
RD2418-U	SQ2418-U
RD2418-PT	SQ2418-PT
RD2418-T	SQ2418-T
RD2418-GRY	SQ2418-GRY
RD2418-CDR	SQ2418-CDR
RD2418-BRN	SQ2418-BRN
RD2418-GRN	SQ2418-GRN



FT-32-TRSQ Flat Top Lid
RB-32-TRSQ Rain Bonnet Lid
AU-32-TRSQ Ash Urn Lid

SQUARE RECEPTACLE LIDS

- Fits our 32 gallon square receptacles
- 14 gauge
- All MIG welded frame (AUR & RBR)
- See page 42 for round receptacle lids
- Thermoplastic coated
- See page 99 for color options



SM KIT Surface Mounting Kit
IG KIT Inground Mounting Kit

RECEPTACLE MOUNTING KITS

All trash receptacles are portable and can be converted into either inground (IG) or surface mount (SM). Kits fit 32, 36, and 55 gallon receptacles. Sold separately

- 2-3/8" O.D. all MIG welded pipe
- Powder coated black finish

SIZE	INGROUND	SURFACE
32 GAL	IG KIT	SM KIT
36 GAL	IG KIT	SM KIT
55 GAL	IG KIT	SM KIT



PL | RECEPTACLE LINER

- Liner fits most of our 32 and 55 gallon trash receptacles.
- 32-Gallon measures 21-7/8" wide x 27-1/2" tall
- 55-Gallon measures 23-3/8" wide x 31-3/8" tall
- Heavy-Duty Plastic
- Sold separately unless noted

32 GALLON	55 GALLON
PL-32	PL-55



CABLE | 18" CABLE

Cable is sold separately. **Specify cable when ordering lid and receptacle**

- Attachment is used to keep the lid and trash receptacle permanently connected
- 3/32" diameter braided cable



20-CDR6 6' Recycled Bench with Back, portable, green recycled plastic planks, black frame



20/21 | RECYCLED BENCH WITH BACK

- Available in 6' or 8' lengths
- Series 20 has six 2" x 4" recycled plastic planks
- Series 21 has four 2" x 6" recycled plastic planks
- Recycled plastic frame
- All zinc plated hardware
- Portable only
- Available in 3 plank colors: cedar, green, grey

20 SERIES	6 FOOT	8 FOOT	21 SERIES	6 FOOT	8 FOOT
	20-GRY6	20-GRY8		21-GRY6	21-GRY8
	20-CDR6	20-CDR8		21-CDR6	21-CDR8
	20-GRN6	20-GRN8		21-GRN6	21-GRN8



22-GRY6 6' Recycled Bench without Back, portable, grey recycled plastic planks, black frame

22 | RECYCLED BENCH WITHOUT BACK

- Available in 6' or 8' lengths
- Three 2" x 4" recycled plastic planks
- Recycled plastic frame
- All zinc plated hardware
- Portable only
- Available in 3 plank colors: cedar, green, grey

6 FOOT	8 FOOT
22-GRY6	22-GRY8
22-CDR6	22-CDR8
22-GRN6	22-GRN8



26-HEX-GRN 6' Hexagon Table, green recycled plastic planks, black frame

26 | RECYCLED PICNIC TABLES

- 41-1/2" hexagon table
- Recycled plastic planks and frame
- All zinc plated hardware
- Portable and/or surface mount
- Available in 2 plank colors: cedar or green

6 FOOT	ADA
26-HEX-CDR	26H-HEX-CDR
26-HEX-GRN	26H-HEX-GRN



24-CDR6 6' Rectangular Table, cedar recycled plastic planks, black frame

24 | RECYCLED PICNIC TABLES

- Available in 6' or 8' lengths
- Optional 8' ADA version
- Recycled plastic planks and frame
- All zinc plated hardware
- Portable and/or surface mount
- Available in 3 plank colors: cedar, green, grey

6 FOOT	8 FOOT	ADA 8 FOOT
24-CDR6	24-CDR8	24H-CDR8
24-GRN6	24-GRN8	24H-GRN8
24-GRY6	24-GRY8	24H-GRY8



682-T Double-Sided Galvanized Trash Receptacle

682 | GALVANIZED TRASH RECEPTACLE

The galvanized trash receptacles and lids can be ordered separately or with inground post and holder(s).

- 3-1/2" O.D. Post
- 1/2" Steel Bar
- 4" O.D. Adjustable Collar
- Portable (P) or inground (S)

	30 GAL CAN	30 GAL LID	HOLDER	CAN, HOLDER, CHAIN
Single-Sided	G31	L31	681	681-T
Double-Sided	—	—	682	682-T



940-A6 6' Aluminum Bench, portable, galvanized frame

940 | ALUMINUM BENCH

- Available in 6', 8', 15', and 21' lengths
- Standard 2" x 10" Aluminum Planks
- Frame can be powder coated or hot-dip galvanized
- Portable (P), inground (S), or surface mount (SM)

6 FOOT	8 FOOT	15 FOOT	21 FOOT
940-A6	940-A8	TB-TPG15	TB-TPG21
		TB-TIG15	TB-TIG21
		TB-TSG15	TB-TSG21



942-A15 15' Aluminum Team Bench, portable, galvanized frame

942 | PARK & TEAM BENCHES | WITHOUT BACK

- Available in 6', 8', 15' or 21' lengths
- 2" x 10" aluminum, wood, or recycled plastic style planks
- All MIG welded frame with zinc plated hardware
- Frame can be powder coated or hot-dip galvanized
- Brace is 1" O.D. pipe
- Portable (P), inground (S), or surface mount (SM)

6 FOOT	8 FOOT	15 FOOT	21 FOOT
942-A6	942-A8	TB-SPG15	TB-SPG21
		TB-SIG15	TB-SIG21
		TB-SSG15	TB-SSG21



238-A8 8' Extra Heavy-Duty Rectangular Table, aluminum, galvanized frame

238/238H | EXTRA HEAVY-DUTY
158/158H | RECTANGULAR TABLE

- Available in 6', 8', 10' or 12' lengths with walk-through design
- 2" x 10" planks
- 2-3/8" O.D. all MIG welded frame with 1-5/16" O.D. brace (238/238H)
- 1-5/8" O.D. all MIG welded frame with 1-5/16" O.D. brace (158/158H)
- Frame can be powder coated or hot-dip galvanized
- All zinc plated hardware
- Table has pre-drilled holes for a portable and/or surface mount frame

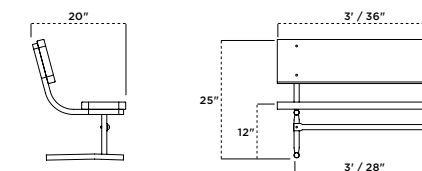
6 FOOT	Bolt-Thru 6 FOOT	8 FOOT	Bolt-Thru 8 FOOT
238-A6	BT238-A6	238-A8	BT238-A8
158-A6	BT158-A6	158-A8	BT158-A8

ADA 8 FOOT (double-sided)	ADA 8 FOOT (single-sided)	10 FOOT	12 FOOT
238H-A8	238HS-A8	PT-HG10	PT-HG12
158H-A8	158HS-A8	PT-HG10HC (ADA)	PT-HG12HC (ADA)



P257 Kid's Size Park Bench

- 257 | KID'S SIZE PARK BENCH
- 1" O.D. all MIG welded pipe with 1" O.D. brace
 - All zinc plated hardware
 - Comes standard with red high density polyethylene planks and a green powder coated frame
 - Seats and backs are 9" x 36"
 - Portable



P557-PE4BL 4' Heavy-Duty Preschool Table

557 | HEAVY-DUTY 4' PRESCHOOL TABLE

- 1-5/8" O.D. all MIG welded pipe with 1" O.D. brace
- Walk through design
- All zinc plated hardware
- Available with green or blue high density polyethylene planks with powder coated frame
- Seats are 9" x 48" and table top is 30" x 48"
- Portable



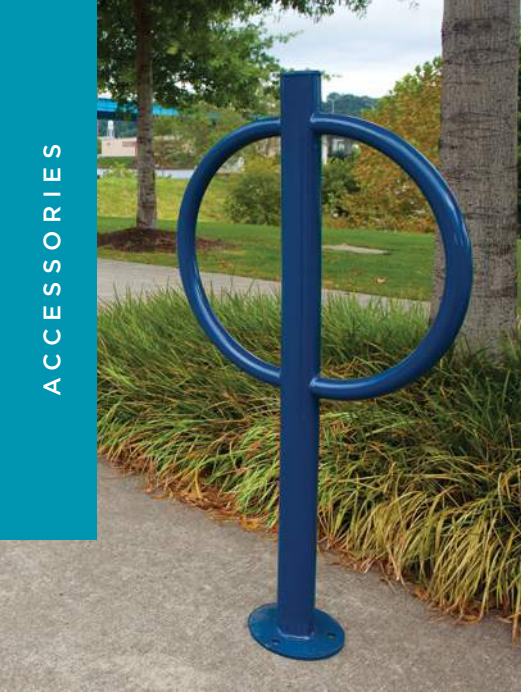
G357 46" Preschool Table

357 | 36" PRESCHOOL TABLE

- 1" O.D. all bolt together frame with 1" O.D. brace
- Walk through design
- All zinc plated hardware
- Features high density polyethylene planks with zinc plated or powder coated frame
- Seats are 9-1/4" x 36" and table top is 24" x 36"
- Portable

GREEN PLANKS YELLOW FRAME	RED & GREEN PLANKS YELLOW FRAME
P357	P357-MC

GREEN PLANKS ZINC PLATED FRAME	RED & GREEN PLANKS ZINC PLATED FRAME
G357	G357-MC



PREMIUM RECEPTACLES

- CL-36 | Classic Receptacle with Door - p.6
- AG-36 | Augusta Receptacle - p.9
- 51-HX | Huntington Receptacle - p.10
- 41-SL | Kensington Receptacle - p.12
- SV-R32 | Palmetto Receptacle - p.13
- 60 | Richmond Receptacle - p.15
- 75 | Madison Receptacle - p.17
- CH | Charleston Receptacle - p.20
- SV-32 | Savannah Receptacle - p.22
- LX-32 | Lexington Receptacle - p.23
- LX-72 | Dual Lexington Receptacle - p.23
- OX-36 | Oxford receptacle - p.25



LX-36FT Lexington Trash Receptacle, vertical slat pattern, beige with matching flat top lid

ULTRACOAT RECEPTACLES

- JK-36 | Jackson Receptacle - p.50
- SD-36FT | Swing Door Receptacle - p. 50
- Metal Trash Receptacles - p. 51
- 32RE | Standard Recycle Logo Receptacle - p. 51



EX-32 Metal Trash Receptacle, blue diamond pattern with **FTR-32-08** Flat Top Lid and **PL-32** Liner

NATURAL RECEPTACLES

- TR-32 | Round Receptacle - p.69
- TRSQ-32 | Square Receptacle - p.69
- TRSQ-20/40/60 | Recycling Receptacle - p.69
- 682 | Galvanized Trash Receptacle - p.72



TR-32-CDR Round Receptacle with cedar recycled planks **FT-32-TR** Flat Top Lid

PLANTERS

- RD2418-LX | Lexington Planter - p.23
- RD2418/SQ2418 | Planter - p.53
- 12/12AT | Ash Tray/Trash Combo - p.53
- RD2418/SQ2418 | Planter - p.70



RD2418-LX Lexington Planter, brown vertical slat pattern



MUV-70 7' Air Blue Umbrella



MUV-70 7' UltraSite Umbrella with wooden pole, pacific blue

MUV | ULTRASITE® UMBRELLA

- Wooden pole
- Acrylic Fabric
- Manual lift system
- Threaded coupling
- Vented top
- Machine washable cover
- Umbrella holder (01-04-0484) sold separately
- See page 73 for color options

7 FOOT DIAMETER	9 FOOT DIAMETER
MUV-70	MUV-90



758A-75 7-1/2' UltraSite Umbrella with anodized aluminum pole, red

758 | ULTRASITE® UMBRELLA

- Anodized aluminum pole with 3-position tilt
- (8) 3/8" diameter zinc plated steel spring wire
- Your choice of manual or crank lift
- Alternating color panels available with upcharge
- Umbrella post diameter 1-5/8" O.D.
- Umbrella holder (01-04-0484) sold separately
- See page 73 for color options

7-1/2' GRADE A Textilene Open Weave	7-1/2' GRADE B Textilene Closed Weave
758A-75	758B-75



7G-CRA UltraSite Umbrella with bright aluminum pole, forest green



7G-CRW UltraSite Umbrella with white aluminum pole, pacific blue

7GC | ULTRASITE® UMBRELLA

The unique fiberglass support rib construction ensures strength, resilience, and durability and holds up to the harshest weather conditions—intense sunlight, high winds, salt air, and driving rain—and will not decay or lose its shape. Our flexible fiberglass ribs absorb wind gusts without breaking and last four to five times longer than traditional steel or wood ribbed umbrellas.

- Two piece post construction
- (6) 3/8" diameter fiberglass ribs
- Each umbrella weighs 15 lbs (plus packaging)
- Molded nylon joints and end tips
- .065" thick aluminum post
- Umbrella post diameter 1-1/2" O.D.
- Anodized and powder coated finishes
- Crank lift mechanism
- Top with valance in vinyl coated weave only
- Alternating colors are not available
- Umbrella holder (01-04-0484) sold separately
- See below for color options

White Aluminum Pole	Champagne Aluminum Pole	Bright Aluminum Pole
7G-CRW	7G-CRC	7G-CRA

UMBRELLA HOLDERS - 01-04-0484



BLACK



WHITE



BEIGE

MUV COLOR OPTIONS



758 COLOR OPTIONS OPEN WEAVE



758 COLOR OPTIONS CLOSED WEAVE



7GC COLOR OPTIONS CLOSED WEAVE





2003/2004 | HAMPTON SERIES

- 4" width
- Available in 3' and 4' heights
- Powder coated finish
- 1 and 2 Loop options available for use with chain
- Surface mount (SM) or inground (S)
- See page 99 for color options

	3 FOOT	4 FOOT
4" width	2003	2004



2624 | SHORELINE

- Available in 6" or 8" diameters
- Available in 3' and 4' heights
- Powder coated finish
- Surface (SM) or inground (S)
- See page 99 for color options

	3 FOOT	4 FOOT
6" diameter	2623	2624
8" diameter	2823	2824



2633/2833 | CLASSIC BIKE BOLLARD

- Available in 6" or 8" diameters
- Available in 3' and 4' heights
- Powder coated finish
- Surface mount (SM) or inground (S)
- See page 99 for color options

	3 FOOT	4 FOOT
6" diameter	2633	2634
8" diameter	2833	2834



2603/2604 | NEWPORT SERIES

- 6" diameter
- Available in 3' and 4' heights
- 1 and 2 Loop options available for use with chain
- Powder coated finish
- Surface mount (SM) and inground (S)
- See page 99 for color options

	3 FOOT	4 FOOT
6" diameter	2603	2604



2023/2024 | DOVER SERIES

- 6" width
- Available in 3' and 4' heights
- Powder coated finish
- Surface mount (SM) or inground (S)
- See page 99 for color options

	3 FOOT	4 FOOT
6" width	2023	2024



2643/2843 | FAIRFAX

- Available in 6" or 8" diameters
- Available in 3' and 4' heights
- Powder coated finish
- Surface mount (SM) or inground (S)
- See page 99 for color options

	3 FOOT	4 FOOT
6" diameter	2643	2644
8" diameter	2843	2844



2013/2014 | MODERN BIKE BOLLARD

- 4" width
- Available in 3' and 4' heights
- 1 and 2 Loop options available for use with chain
- Powder coated finish
- Surface mount (SM) or inground (S)
- See page 99 for color options

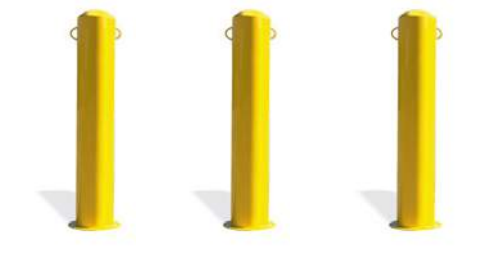
	3 FOOT	4 FOOT
4" width	2013	2014



2613/2813 | ROCKLAND SERIES

- 6" and 8" diameters
- Available in 3' and 4' heights
- 1 and 2 Loop options available for use with chain
- Powder coated finish
- Surface mount (SM) or inground (S)
- See page 99 for color options

	3 FOOT	4 FOOT
6" diameter	2613	2614
8" diameter	2813	2814



2803/2804 | SAFETY BOLLARD

- 8" diameter
- Available in 3' and 4' heights
- 1 and 2 Loop options available for use with chain
- Powder coated finish
- Surface mount (SM) or inground (S)
- See page 99 for color options

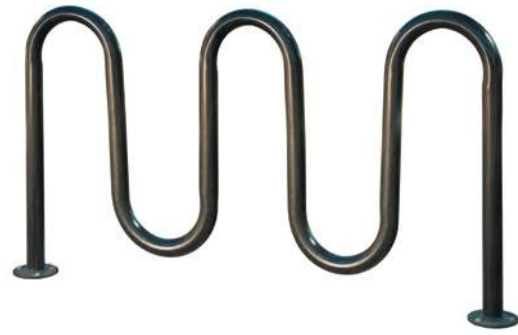
	3 FOOT	4 FOOT
8" diameter	2803	2804



2900/2901 | COLLAPSIBLE BOLLARD

- 6" width
- Available in 30" and 48" heights
- Designed to prevent unwanted traffic
- Safety yellow only
- Base clearance when collapsed is 3-1/2"
- Must be installed with J bolts and/or anchor bolts (sold separately)
- Stainless steel hardware

	30" Height	48" Height
6" width	2900	2901

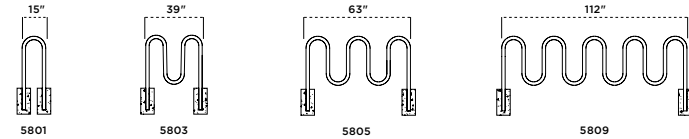


5805SM Contemporary 5 Loop Bike Rack, surface mount

5800 | CONTEMPORARY LOOP BIKE RACK

- 1, 3, 5, 9, 11, and 13 loop options
- 2-3/8" O.D. steel tubing
- Available as hot-dip galvanized or optional powder coated finish
- Inground (S) or surface mount (SM)
- See page 99 for color options

1 LOOP 1'3" 2 bikes	3 LOOP 2'3" 5 bikes	5 LOOP 5'3" 7 bikes	9 LOOP 9'3" 11 bikes	11 LOOPS 11'3" 13 bikes
5801	5803	5805	5809	5811

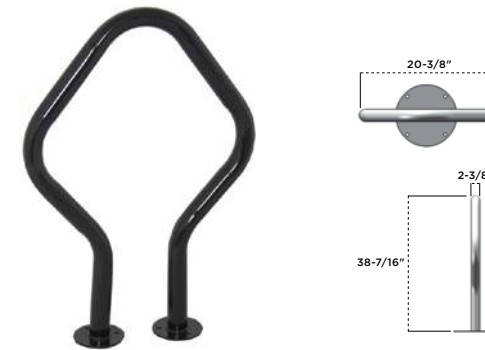


5821D Deluxe Inverted Rack

5821/5821D | INVERTED SERIES

- 1, 2, 3, 4, and 5 loop options on c-channel rails
- 18" wide standard / 30" wide deluxe (D)
- Square tubing
- Powder coated finish
- Surface mount only
- See page 99 for color options

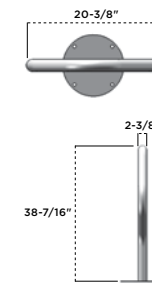
2 LOOP 3' 4 bikes	3 LOOP 5.5' 6 bikes	4 LOOP 8' 8 bikes	5 LOOP 10.5' 10 bikes
5821-2	5821-3	5821-4	5821-5
5821D-2	5821D-3	5821D-4	5821D-5



5030SM Flare Rack, black

5030 | FLARE RACK

- Capacity up to 2 bikes
- 38-7/16" high x 26-1/4" wide
- Framework is 2-3/8" O.D. pipe
- Powder coated finish
- Inground (S) or surface mount (SM)
- See page 99 for color options

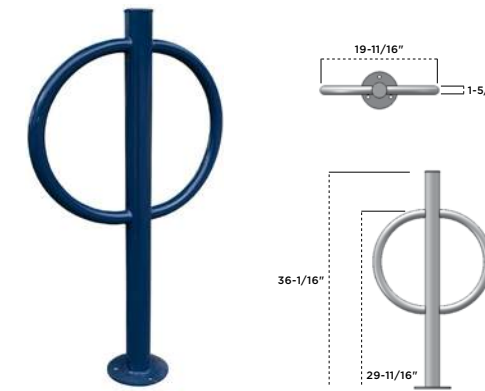
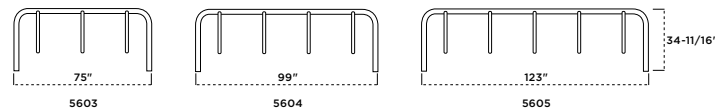


5603 Hanger Rack, 3-Loop, black

5603/5604/5605 | HANGER RACK

- 3, 4, and 5 loop options
- Round tubing
- Powder coated finish
- Portable and/or surface mount
- See page 99 for color options

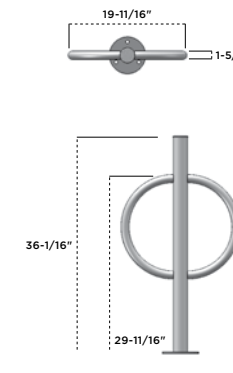
3 LOOP 6'3" 6 bikes	4 LOOP 8'3" 8 bikes	5 LOOP 10'3" 10 bikes
5603	5604	5605



5040SM Hlare Rack, ultra blue

5040 | HITCH RACK

- Capacity up to 2 bikes
- 36" high x 20" wide
- 2-3/8" O.D. 12 gauge steel tubing
- Rings are 1-5/16" x 14 gauge zinc tubing
- Powder coated finish
- Inground (S) or surface mount (SM)
- See page 99 for color options



5801SM 1 Loop Standard Inverted Rack, green

5801/5801D | INVERTED SERIES

- 1, 2, 3, 4, and 5 loop options on c-channel rails
- 14.5" wide standard / 30" wide deluxe (D)
- Round tubing
- Powder coated finish
- Surface mount only
- See page 99 for color options

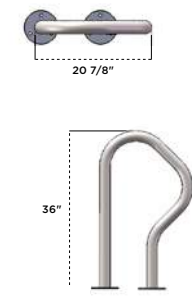
2 LOOP 3' 4 bikes	3 LOOP 5.5' 6 bikes	4 LOOP 8' 8 bikes	5 LOOP 10.5' 10 bikes
5801-2	5801-3	5801-4	5801-5
5801D-2	5801D-3	5801D-4	5801D-5



5060SM Flash Bike Rack, black

5060 | FLASH BIKE RACK

- Capacity up to 2 bikes
- 38-7/16" high x 26-1/4" wide
- Framework is 2-3/8" O.D. pipe
- Powder coated finish
- Inground (S) or surface mount (SM)
- See page 99 for color options





620 Rotating Grill



5700/5900 | TRADITIONAL BIKE RACK

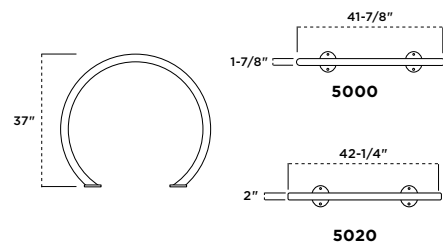
- 5', 8' and 10' length options
- Available in inground, portable and Surface mount options
- Add-on options available
- Available in single sided (5700 series) or double sided (5900 series)
- 1-5/8" O.D. posts with 5/8" O.D. rung bars
- Heavy duty casted clamps
- All zinc plated hardware

5705S 5' Traditional Bike Rack, ultra silver metallic

SINGLE SIDED (5700)	5' (ADD-ON)		DOUBLE SIDED (5900)	5' (ADD-ON)	
	BIKES	MODEL		BIKES	MODEL
	5	5705AO		10	5905AO
	8	5708		16	5908
	8	5708AO		16	5908AO
	10	5710		20	5910
	10	5710AO		20	5910AO



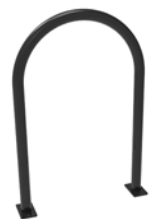
5020SM Horizons Bike Rack, galvanized



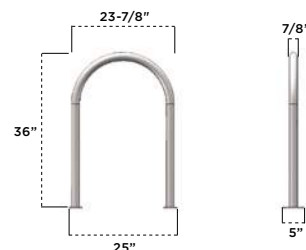
5000 | SOLSTICE RACK

5020 | HORIZONS RACK

- Capacity up to 2 bikes
- 1.9" O.D. round (5000) or 2" square (5020) framework x 11 gauge steel tubing
- Powder coated finish
- Inground (S) or surface mount (SM)
- See page 99 for color options



5050SM U Bike Rack, black



5050 | U BIKE RACK

- Capacity up to 2 bikes
- Powder coated finish
- Inground (S) or surface mount (SM)
- See page 99 for color options



280 square inches of cooking area

616 | ROTATING FLIP-BACK GRILL

- Grill measures 20"L x 14"D x 8"H
- Grill rotates a full 360°
- Durable rust-resistant high-temp black powder coated firebox
- Optional hot-dip (G) galvanized firebox and utility shelf
- 4-level adjustable cooking grate has cool-coil handles
- Grate flips back for easy clean-up and fire building
- All MIG welded 7 ga. base plate with 10 ga. side plates
- Galvanized iron pipe post inground mount
- ADA version available

	3-1/2" post	3-1/2" post with shelf
Standard	616-3	616-3-U
Galvanized	616G-3	616G-3-U



550 square inches of cooking area

650 | DUAL GRATE GRILL

- Grill measures 20"L x 28"D x 8"H
- Durable rust-resistant high-temp black powder coated firebox
- Optional hot-dip (G) galvanized firebox and utility shelf
- 4-level adjustable cooking grate has cool-coil handles
- All MIG welded 7 ga. base plate with 10 ga. side plate
- 3-1/2" O.D. posts: permanent inground mount
- Optional lockable grill cover: P-01-03-0135 (for use when grill is out of service)



Lockable grill cover available (P-01-03-0133)

620/630 | ADJUSTABLE ROTATING GRILL

- 620 measures 20"L x 14"D x 8"H with 280 square inch cooking area
- 630 measures 20"L x 15"D x 10"H with 300 square inch cooking area
- Grill rotates a full 360°
- Durable rust-resistant, high-temp, black powder coated firebox
- Optional hot-dip (G) galvanized firebox and utility shelf
- 4-level adjustable cooking grate has cool-coil handles
- All MIG welded 7 ga. base plate with 10 ga. side plate
- 3-1/2" O.D. post inground mount
- Optional lockable grill cover: P-01-03-0133 (for use when grill is out of service)

620 SERIES	3-1/2" post		630 SERIES	3-1/2" post	
	Standard	Model		Standard	Model
	620-3			630-3	
ADA Standard	620H-3		ADA Standard	630H-3	
Galvanized	620G-3		Galvanized	630G-3	
ADA Galvanized	620HG-3		ADA Galvanized	630HG-3	

280-300 square inches of cooking area



1,008 square inches of cooking area

621 | BI-LEVEL GRILL

- Grill measures 28"L x 36"D x 10"H
- Durable rust-resistant, high-temp, black powder coated firebox
- Includes a utility shelf with a 4-level adjustable cooking grate
- 4" square post with 1/4" gussets for additional support
- All MIG welded 7 ga. base plate and side walls
- Inground or surface mount



1,064 square inches of cooking area

627 | COMMERCIAL GRILL

- Grill measures 28"L x 36"D x 10"H
- Durable rust-resistant, high-temp black powder coated firebox
- Cantilever cooking grate
- Grill features a double-flip-back cooking surface for easy cleaning
- 4" sq. post support tubing
- All MIG welded 7 ga. base plate with 10 ga. side walls
- Inground (S) or surface mount (SM)



300 square inches of cooking area

632 | ROTATING GRILL

- Grill measures 20-1/16"L x 18-5/16"D x 40"H
- Grill rotates a full 360°
- Durable rust-resistant high-temp black powder coated firebox
- Cantilever cooking grate
- All MIG welded 7 ga. base plate with 10 ga. side walls
- Inground (S) or surface mount (SM)

	3-1/2" post	3-1/2" post ADA
Standard	632-3	632H-3
Galvanized	632G-3	632HG-3



300 square inches of cooking area

600 | FIRE RING

- 32" diameter x 30" deep
- Durable rust-resistant, high-temp, black powder coated firebox
- Cooking grate is permanently attached with a cool-coil handle
- Grate flips back for easy clean-up and fire building
- All MIG welded 7 gauge outer wall with 1" safety lip
- Staple anchors are included for a permanent inground mount
- Fire ring only; ADA accessible double fire ring available

	7" HIGH	9" HIGH	18" HIGH ADA	18" HIGH ADA
With Grate	600	600-9	600H	600H-D (with inner ring)
No Grate	601	601-9	—	—



280 square inches of cooking area

612 | MULTI-FUNCTIONAL FIRE RING

- 32" diameter x 30" deep
- Durable rust-resistant, high-temp, black powder-coat firebox
- Permanently mounted 4-level adjustable cooking grate with cool-coil handles
- All MIG welded 7 gauge outer wall with 1" safety lip
- Staple anchors are included for a permanent inground mount

	7" HIGH	9" HIGH	18" HIGH ADA	18" HIGH ADA
612	612-9	612H	612H-D (with inner ring)	

*Call us for the full list of grills we have available.



670 | LANTERN HANGER

- Standard galvanized finish
- Powder coated finish is optional
- 2-3/8" O.D. all MIG welded pipe
- End cap and lantern hook included
- Available as ADA accessible (670H)
- Inground mount

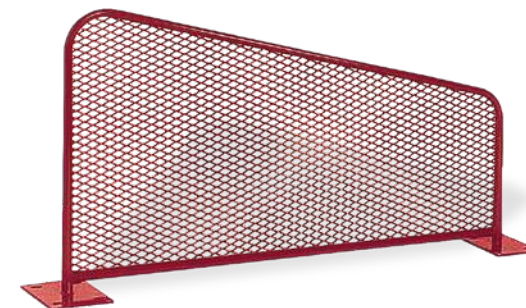


110/115 | GOLF BAG STANDS

The Golf Bag Stand is available with or without a bench. The golf bag holder has a 6, 8, 12, or 16-bag capacity.

- 6' or 8' lengths
- Thermoplastic finish with powder coated frame
- 2-3/8" all MIG welded frame
- All stainless steel hardware
- Portable and/or surface mount
- See page 99 for color options

6-BAG	8-BAG	8-BAG w/ bench	12-BAG	16-BAG
110-16V	110-18V	115-28V	110-26V	110-28V
110-16P	110-18P	115-28P	110-26P	110-28P



100/105 | GOLF RANGE DIVIDERS

The UltraSite® Tee/Driving Range Dividers are designed for safety to deflect golf balls.

- Thermoplastic finish
- 1" all MIG welded
- Diamond pattern only
- 105 Golf Range Divider comes with golf bag rest
- Inground (S) or surface mount (SM)
- See page 99 for color options

Inground	Surface Mount
110S-V	100SM-V
105S-V	105SM-V



119S-V20 | FOUL BALL POLES

- Two piece bolt together construction
- 3-1/2" OD 11 ga steel tubing
- Wing Panel is 12 ga expanded metal design
- Powder coated finish
- Inground only, Ground sleeves (G-03-02-0022) sold separately
- See page 99 for color options

PRODUCT #	PRODUCT NAME	PAGE
BENCHES		
PREMIUM BENCHES		
66/68/69	Phoenix Cantilver Bench	5
974	Wilmington Bench	6
11/12	Hartford Bench	7
91/92	Hamilton Bench with/without Back	8
93/94	Augusta Bench with/without Back	9
52/53	Huntington Bench	10
14/15	Pasadena Bench	11
43/44	Kensington Bench with/without Back	12
800	Palmetto Bench	13
81-HS6	Richmond Bench (Steel)	14
61/62	Richmond Bench (Recycled)	15
71/72/73	Madison Bench (Steel)	16
71/72/73	Madison Bench (IPE)	17
98/99	Durham Bench (Steel)	18
98/99	Durham Bench (Recycled)	19
964/968	Charleston Bench (Steel)	20
964/968	Charleston Bench (Recycled)	21
922	Savannah Bench	22
954/958	Lexington Bench	23
85/86	Oxford Bench	24
ULTRACOAT BENCHES		
940	Extra Heavy-Duty Bench with Back	27
942	Extra Heavy-Duty Bench without Back	28
970	Cantilevered Bench	28
934	Geometric Mall Bench	29
932	Mall Bench	29
965/966	Contour Bench	30
967	Contour Bench Swing	31
975/976	Contour Cantilevered Bench	31
961/962	Bollard Style Bench	32
321/322	Canopy Bench	32
800/700	Straight Bench	33
715/815	Concave/Convex Bench	33
730/830	Concave/Convex Bench	33
955	Sierra Bench	34
963	Contour Bench	34
95/96	Jackson Bench	35
940	Buddy bench	56
954	Lexington Buddy Bench	56
940PPS	3' Portable Preschool Bench	58
NATURAL BENCHES		
952	Recycled Bench without Back	61
982	Recycled Bench with Back	61
940	Extra Heavy-Duty Bench	62
965	Double-Post Contour Park Bench	62
975	Single-Post Contour Park Bench	63
992/993	Recycled Plastic Bench with Planters	63
20/21	Recycled Bench with Back	71
22	Recycled Bench without Back	71
940	Aluminum Bench	72
942	Park & Team Benches without Back	72
257	Kid's Size Park Bench	73

PRODUCT #	PRODUCT NAME	PAGE
TABLES		
PREMIUM TABLES		
65	Phoenix Cantilever Table	5
10-RDHS	Hartford Table	7
364/30	Hamilton Table	8
50	Huntington Table with 4 Chairs	10
40/42	Kensington Table	12
63	Richmond Table (Steel)	14
63/64	Richmond Table (Recycled)	15
74	Madison Table (IPE)	17
238	Oxford Table	25
ULTRACOAT TABLES		
358	Square, Octagon, & Round Table	37
358H	3-Seat Tables	37
238	Extra Heavy-Duty Rectangular Table	38
238HS	Extra Heavy-Duty Single Sided ADA Table	38
238H	Extra Heavy-Duty ADA Shelter Table	39
238-3	Extra Heavy-Duty Shelter Table	39
238H	Extra Heavy-Duty 8' ADA Accessible Table	39
158	Heavy-Duty Rectangular Table	40
158H	Heavy-Duty 8' ADA Accessible Table	40
158HS	Heavy-Duty 8' Single-Sided ADA Accessible Table	40
BT238	Extra Heavy-Duty Bolt-Thru Table	41
BT158	Heavy-Duty Bolt-Thru Table	41
337	Heavy-Duty Rectangular Single Pedestal Table	42
349	Multi Pedestal Table	42
347	Rectangular Dual Pedestal	43
238U	Utility Table	43
349U	Multi Pedestal Utility Table	43
239	Rectangular UltraSite® Span Leg Table	44
369	Square UltraSite® Span Leg Table	44
501	Canteen Table	45
358	Capri Seating Table	45
320/321	Canopy Table	46
346	Mall Table	46
338	46" Single Pedestal Table	47
230	Round Contour Table	47
365	Bistro Table	48
362	Ultra Bar Height Table	48
360/360L	Pedestal Food Court Table	49
361	Food Court Table	49
953/956	Tall and Standard Food Court Chairs	49
158PS	Rectangular Preschool Table	58
350PS/358PS	Portable Preschool Table	59
NATURAL TABLES		
238	Extra Heavy-Duty Rectangular Table	64
238H	Extra Heavy-Duty 8' ADA Accessible Table	64
238-3	Extra Heavy-Duty Shelter Table	65
BT238	Bolt-Thru Extra Heavy-Duty Table	65
238H	Extra Heavy-Duty 8' ADA Shelter Table	65
BT158	Extra Heavy-Duty Bolt-Thru Table	66
158	Heavy-Duty Rectangular Table	66
158H	Heavy-Duty 8' Accessible Table	66
358	48" Square Table	67

PRODUCT #	PRODUCT NAME	PAGE
358H	ADA 48" Square Table	67
349/348	Multi-Pedestal Table	67
338/338H	48" Single Pedestal Table	68
347	Dual Pedestal Rectangular Table	68
337	Single Pedestal Rectangular Table	68
24/26	Recycled Picnic Tables	71
238/238H	Extra Heavy-Duty Rectangular Table	72
158/158H	Extra Heavy-Duty Rectangular Table	72
557	Heavy-Duty 4' Preschool Table	73
357	36" Preschool Table	73
RECEPTACLES & PLANTERS		
PREMIUM RECEPTACLES & PLANTERS		
CL-36	Classic Receptacle with Door	6
AG-36	Augusta Receptacle	7
51-HX	Huntington Receptacle	10
41-SD	Kensington Receptacle	11
SV-R32	Palmetto Receptacle	13
60	Richmond Receptacle	15
75	Madison Receptacle	17
CH	Charleston Receptacle	21
SV-32	Savannah Receptacle	22
LX-36	Lexington Receptacle	23
LX-72	Dual Lexington Receptacle	23
RD2418-LX	Lexington Planter	23
OX-36	Oxford Receptacle	25
ULTRACOAT RECEPTACLES & PLANTERS		
JK-36	Jackson Receptacle	50
SD-36FT	Swing Door Receptacle	50
32/55	Metal Trash Receptacles	51
32RE	Standard Recycle Logo Receptacle	51
SM/IG KITS	Receptacle Mounting Kits	51
FTR	Flat Top Lid	52
DT-32	Dome Top	52
AUR	Ash Urn Lid	52
RT-32	Round Top	52
RBR	Rain Bonnet Lid	52
PL	Receptacle Liner	52
Cable	18" Cable	52
RD2418/SQ2418	UltraSite® Planter	53
12/12AT	Ash Tray & Ash Tray/Trash Combo	53
NATURAL RECEPTACLES & PLANTERS		
TR-32	Round Receptacle	69
TRSQ-32	Square Receptacle	69
TRSQ-20/40/60	Recycling Receptacle	69
RD2418/SQ2418	Planter	70
SM/IG KITS	Receptacle Mounting Kits	70
AU-32-TRSQ	Ash Urn Lid	70
FT-32-TRSQ	Flat Top Lid	70
RB-32-TRSQ	Rain Bonnet Lid	70
BIKE RACKS		
5000S/5000SM	Solstice Rack	82
5020S/5020SM	Horizons Rack	82
5030	Flare Rack	81

PRODUCT #	PRODUCT NAME	PAGE
5040S/5040SM	Hitch Rack	81
5050S/5050SM	U Bike Rack	82
5060	Flash Rack	81
5603/5604/5605	Hanger Rack	80
5800	Contemporary Loop Bike Rack	80
5801/5801D	Inverted Series	80
5821/5821D	Inverted Series	81

ACCESSORIES		
7GC	UltraSite® Umbrella	77
100/105	Golf Range Dividers	85
110/115	Golf Bag Stands	85
119S-V20	Foul Ball Poles	85
670	Lantern Hanger	85
758	UltraSite® Umbrella	76
2003/2004	Hampton Series Bollard	78
2013/2014	Modern Bike Bollard	78
2023/2024	Dover Series	78
2603/2604	Newport Series Bollard	79
2613/2813	Rockland Series	79
2624	Shoreline Bollard	79
2633/2833	Classic Bike Bollard	78
2643/2843	Fairfax Bollard	79
2803/2804	Safety Bollard	78
2900/2901	Collapsible Bollard	79
MUV	UltraSite® Umbrella	76

GRILLS		
600	Fire Ring	84
612	Multi-Functional Fire Ring	84
616	Rotating Flip-Back Grill	83
620/630	Adjustable Rotating Grill	83
621	Bi-Level Grill	83
627	Commercial Grill	84
632	Rotating Grill	84
650	Dual Grate Grill	83

WARRANTY & TERMS

7-YEAR LIMITED WARRANTY

7-Year Limited Warranty on super durable and powder coated elements. UltraSite® guarantees all items for one full year to be free of defects in workmanship or materials when installed and maintained properly. We agree to repair or replace any items determined to be defective. Items specifically not covered by this warranty include vandalism, man made or natural disasters, lack of maintenance, normal weathering or wear, and tear due to public use.

ORDER INFORMATION

When ordering please include a brief description of all items. Be sure to include colors for UltraCoat® and powder coated surfaces. To assist UltraSite® in entering orders properly, please fax, mail, or e-mail orders on your standard purchase order form. Quotes are good for 30 days.

GSA CONTRACT

GSA pricing is available on several items. Contact our sales department for specific information at 1-800-458-5872.

SPECIFICATIONS

Due to UltraSite's continuous product improvement, we reserve the right to change product specifications when necessary without notice.

PRICING

UltraSite® strives to keep pricing as low as possible. However, should we encounter increases in our costs that are too large to absorb, we reserve the right to increase prices without notice.

TERMS

Approved accounts net 30 days. Initial order requires payment in full before shipment. A finance charge of 1-1/2% per month will be applied to all delinquent accounts. We accept:



FREIGHT CHARGES

Terms of sale are F.O.B. factory. UltraSite® will prepay and add the freight to the invoice if requested to do so. All weights are approximate.

DAMAGES

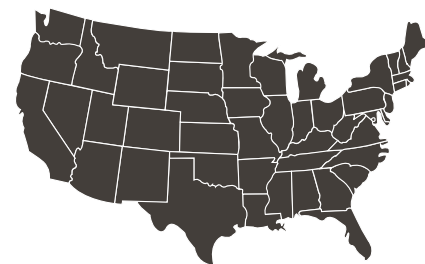
Damages or loss in transit is the responsibility of the carrier, whether visible or concealed. It is the responsibility of the recipient to assure that the order is received complete. Before signing the delivery receipt, inspect the shipment immediately and completely. Note any damages or shortages on the bill of lading. Damage reports must be filed within 5 days. UltraSite® is NOT responsible for damages or loss in transit. Title to all goods passes to the customer at the time of shipment. UltraSite® will assist in filing claims if the freight arrangements were made by UltraSite® at your request.

CANCELLATIONS AND RETURNS

Cancellations are only accepted with pre-approval from UltraSite®. No merchandise shall be returned without a Return Goods Authorization number which is issued by customer service. Any authorized merchandise must be carefully packed and received in saleable condition. A restocking charge of up to 25% will be applied to all returned goods when the error is not the fault of UltraSite®. All returns must be shipped freight prepaid.

NATIONWIDE INSTALLATION

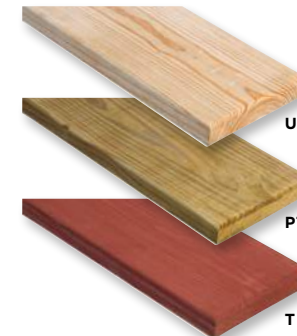
We offer affordable delivery and installation pricing in the continental USA. Any zip code, anytime!



THERMO: AAMA 2605
AAMA CERTIFICATION 2604



PLANK STYLES AND COLOR OPTIONS



WOOD PLANKS

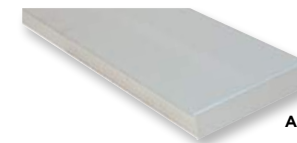
- 2" x 10" and 2" x 4" sizes
- Rounded edges
- #1 southern yellow pine

(U) UNTREATED

- **(PT) PRESSURE TREATED**
- Environmentally friendly (ACQ)
- Kiln dried before and after treatment

(T) REDWOOD STAIN

- Sealed in redwood stain with wood preservative

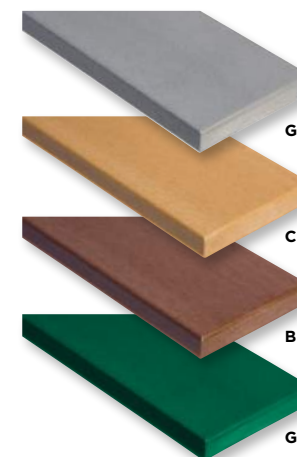


ALUMINUM PLANKS

- 2" x 10" size
- 6063-T6 extruded aluminum alloy

(A) ANODIZED

- Used for table tops, seats, and backs on most products

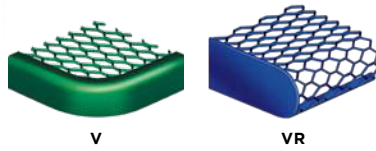


RECYCLED PLANKS

- 2" x 10", 2" x 4", 3" x 4", and 4" x 4" sizes
- Rounded edges
- 100% recycled plastic with color
- Ask about custom color options

(GRY) GRAY**(CDR) CEDAR****(BRN) BROWN****(GRN) GREEN**

DIE FORMED SEAT PATTERNS

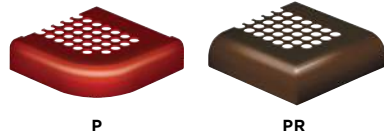


V | DIAMOND

- 9-gauge material
- Expanded metal
- Round corners
- 3/4" opening

VR | DIAMOND ROLLED EDGE

- 9-gauge material
- Expanded metal
- Rolled edge
- 3/4" opening



P | PERFORATED

- Perforated metal
- Round corners
- 5/8" diameter punched pattern
- 12-gauge sheet steel

PR | PERFORATED ROLLED EDGE

- Perforated metal
- Rolled corners
- 5/8" diameter punched pattern
- 14-gauge sheet steel



W | WAVE

- 12-gauge sheet steel



FB | FIESTA

- 12-gauge sheet steel



S | SLAT

- 12-gauge sheet steel

COLOR GUIDE



ULTRA BLUE

BURGUNDY

GREEN

BEIGE



BLUE

RED

BROWN

BLACK

ULTRACOAT® THERMOPLASTIC COLORS

- Superior Adhesion
- Resistance to Cutting and Vandalism
- No Runs or Drips
- Smooth Finish Prevents Mold and Mildew
- Easily Repaired
- UV Protection
- Environmentally Friendly

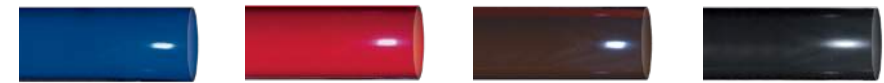


ULTRA BLUE

BURGUNDY

GREEN

BEIGE



BLUE

RED

BROWN

BLACK



YELLOW

PURPLE

DARK GREY

MATTE BLACK



WHITE

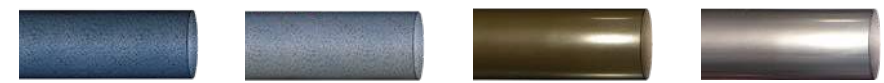
ORANGE
NEW

SKY BLUE
NEW

SPRING GREEN
NEW

STANDARD POWDER COAT COLORS

The steel framework used in the UltraCoat® product line delivers one of the industry's most durable protective coatings. UltraSite® further enhances the durability by applying a superior powder coated finish. The process provides three layers of protection from harmful environmental elements, with very little maintenance.



BLUE VEIN

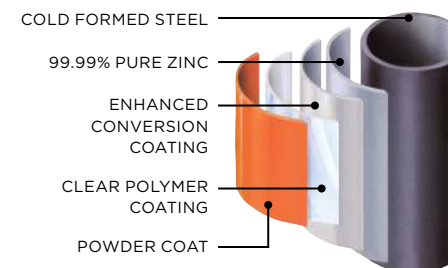
SILVER VEIN

SPARTAN BRONZE METALLIC

ULTRA SILVER METALLIC

PREMIUM POWDER COAT COLORS

- Additional upcharge



STANDARD POWDER COAT

- Uniform coating
- Durability
- High-quality
- Attractive finish



HOT-DIP GALVANIZED

- Galvanized both inside and out
- Superior four-layer adhesion bond
- Excellent abrasion resistance
- Provides cathodic protection to the underlying steel
- Increases the useful life of steel



SITE FURNISHINGS

1675 Locust Street
Red Bud, IL 62278



Find us on **CADdetails**



Like us on Facebook

RECREATION TODAY



2414 E Railroad St
Nampa, ID 83687

208.442.9350 or 800.481.8705

info@rectoday.net | www.rectoday.net

