

Rubber Designs

Better for the earth. Better for you.



Doing our part to go green by using 100% recycled tire waste, to create durable, safe, rubber products that are better for everyone.

Better for the earth. Better for you.



Rubber Designs is produced with 100% recycled rubber tire buffing. Our products represent creative ways to make use of rubber tire waste, a stream that is difficult to dispose of in a responsible and environmentally safe manner. By using recycled rubber in the production of our products, we manage to provide the lowest environmental impact when producing our product line. The total energy consumed in the manufacturing of Rubber Designs is less than the energies consumed when disposing of waste, or producing virgin rubber or synthetic source materials. Sustainable recycled rubber products are simply more cost effective with respect to production and purchase price.

The United States alone generates over 260 million tires every year, most are disposed of in landfills and illegal dumpsites. This creates hazardous conditions for the environment and its inhabitants. By producing our products and continuing to develop new and innovative additions to our line, our company is dedicated to building the economic and social value of recycled products while decreasing negative environmental impact. Rubber Designs products are as great, as they are **GREEN!**

What is Rubber Buffing?

Our recycled rubber buffing is taken from the outer layer of large commercial tires. By using only the outer buffing and not the whole tire, we keep the potentially harmful particles such as mold-attracting fabric shreds and slivers of steel out of our products and away from you and your family.

As the tire is spun at a high speed, the outer layer is shredded off and collected, creating the soft and safe rubber buffing we use in our recycled rubber product offers. With our unique, organic powder color coating combined with our formulated polymer, our colors won't rub off or stain. The extra care we take in the production of our recycled rubber products places us a cut above the rest.

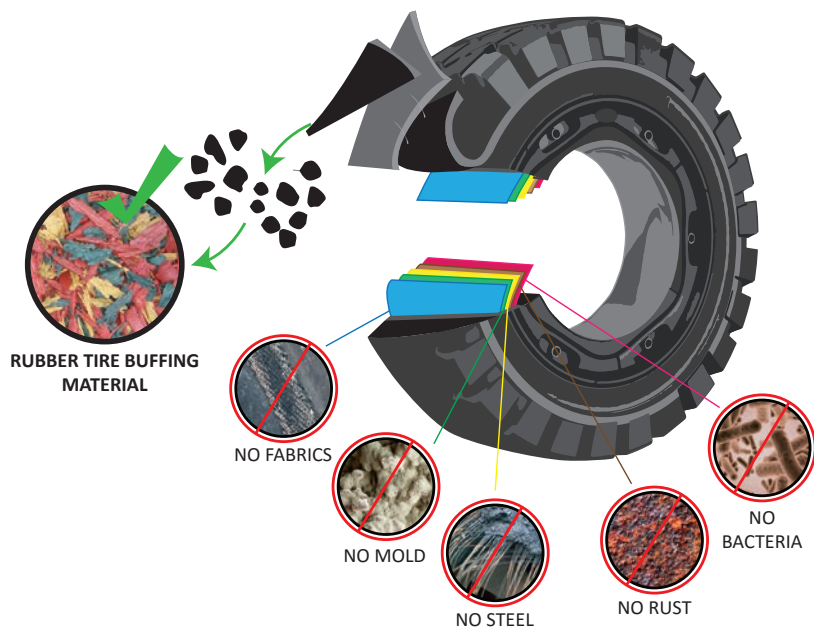


Table of Contents

	PAGE
Playground Products	1
Horse Property Surfacing	11
Fitness Items	15
Landscaping	19
Poured-In-Place	29
Adhesives & Extenders	33
Custom Molding	35
Our Services	37
Sample Packages	39

Doing our part to go green by using 100% recycled tire waste, to create durable, safe, rubber products that are better for everyone.



Interlocking Safety Tiles

The introduction of our Rubber Designs Interlocking Rubber Safety Tiles marks our latest and boldest efforts to set the standard for playground safety. The decision to engineer a product to comply with stringent benchmarks is based on the simple premise that every child deserves to be safe on the playground.

Interlocking safety tiles have been tested for all required fall height attenuation and exceed ASTM and CPSC guidelines. Safety tiles are easy to maintain, will not mold or mildew and resist fading. These tiles are not only aesthetically pleasing, but offer a simpler way to repair and maintain high traffic areas. Rubber Designs Interlocking Rubber Safety Tiles are available in various sizes and colors, including EPDM colors. We offer standard and bevelled edges and will help determine which base or subsurface will work best for each situation and budget.

- 
ECO-FRIENDLY
- 
POUROUS
- 
LOW MAINTENANCE
- 
DURABLE
- 
ADA ACCESSIBLE
- 
COST SAVING
- 
SAFETY APPROVED
- 
SLIP RESISTANT



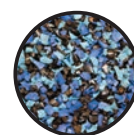
Available in these blends and single colors:



100% Standard
One Standard
Buffing Color



50/50 EPDM
50% Black
50% Standard Color



100% EPDM
Up to Three
Standard Colors

Applications:

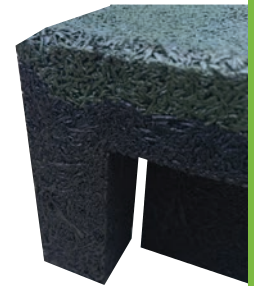
- Residential Playgrounds
- School Playgrounds
- Play Areas
- Anti-Fatigue Mats

Benefits:

- Absorbs Shock
- ADA Compliant
- Prevents Trip Hazards
- Prevents Kick-out
- Reduces Dust

Safety - Inspired by architectural arches, the bottom of our Rubber Designs Interlocking Safety Tile provides structural surety related to gradual loss of intensity for fall height situations in different field conditions and temperatures. Its unique design provides a strong and stable footprint while providing excellent shock absorption and load dispersion.

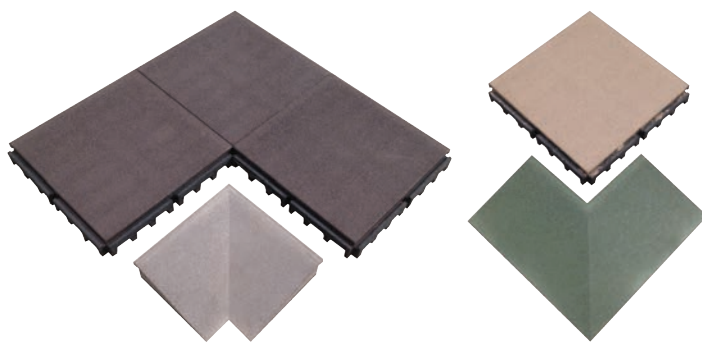
Easy Installation - Rubber Designs Interlocking Safety Tiles have a built-in alignment foot that makes installation a breeze. Use the alignment foot during your installation to eliminate marginal error by achieving straighter lines for easy install.



Interlocking System - Interlocking tiles contain a locking mechanism on all FOUR sides of the tile. This provides stability along the entire perimeter of the tile. This mechanism helps prevent movement or shifting of our tiled surface and helps eliminate failures between tiles where gaps have traditionally allowed debris to settle, causing the tiles to curl.



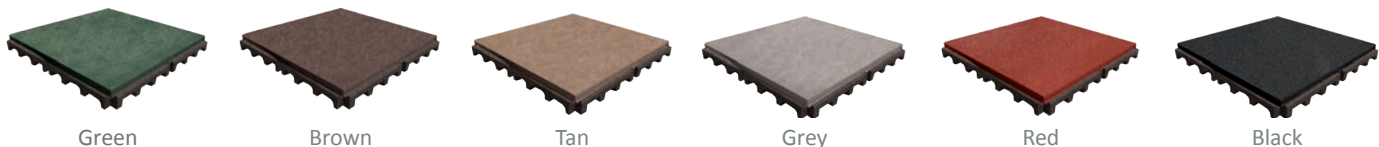
Full Set of Accessories - We provide a full set of accessories. Inside corners, outside corners, and transitions allow you to make perfect 90 degree angles without the guess work. All accessories are 14" wide as opposed to our competitors 8" wide.



Interlocking Safety Tiles Fall Height Rating



Standard Buffering Top Colors:



Green

Brown

Tan

Grey

Red

Black

Standard EPDM Color Choices: (Maximum 3 colors)



Blue

Green

Yellow

Black

Teal

Purple

Orange

Mid-Grey

Red

Mid-Brown

Light Grey

Light Blue

Gold

Eggshell

Dark Blue

Cocoa

Beige



NO FABRICS



NO MOLD



NO STEEL



NO RUST



NO BACTERIA



Rainbow
(mix of red/green/yellow)
RATB601- 50lb



Rustic
(mix of red/brown)
RUTB611- 50lb



Jungle
(mix of red/brown/yellow)
JUTB621- 50lb



Red



Green



Brown



Yellow



Cypress

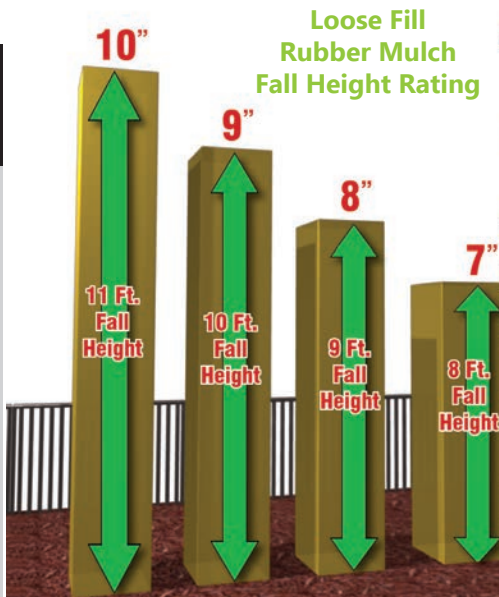


COST COMPARISON OVER A 10-YEAR LIFE EXPECTANCY

Engineered Wood Fiber	
Initial cost	[High]
Cost over 10 Years	[High]
Rubber Designs Rubber Mulch	
Initial cost	[Low]
Cost over 10 Years	[Low]



COST SAVING





Swing and Slide Safety Mats

Rubber Designs Swing Safety Mats are bevelled mats manufactured from recycled rubber tire buffing in a single density fabrication. Our swing mats are recommended for use in conjunction with any loose fill playground surfacing where loose fill surfacing gets kicked out or displaced under the swing or in high traffic areas. Rubber Designs Swing Safety Mat enhances the safety capabilities and helps keep maintenance to a minimum. Our swing mats weigh about 120 lbs., which helps to make them vandal safe, and also gives them the needed stability for aggressive and high traffic play areas. The bevelled edge prevents tripping and allows the mats to be buried either partially or completely without presenting a hazard. Rubber Designs Swing Safety Mats are a must when safety is a priority.

Applications:

- Residential Playgrounds
- School Playgrounds
- Play Areas
- Anti-Fatigue Mats

Benefits:

- Absorbs Shock
- Prevents Kick-out
- Reduces Dust



MADE IN USA RECYCLED



5' x 3' x 1 3/4"
5' x 3' x 2"

Rubber Designs Slide Mat is manufactured from 100% recycled tire buffing. They are wheelchair accessible and are set at the bottom or base of any slide for a consistent soft landing. Slide mats provide extra protection for shock absorption on top of, or under, existing loose fill surfacing. The Rubber Designs Slide Mat enhances the safety capabilities and helps keep maintenance to a minimum. The bevelled edge allows the mats to be buried either partially or completely without presenting a hazard and preventing tripping.



MADE IN USA RECYCLED



4' x 2' x 1"
4' x 2' x 2 1/4"



Shroom Steppers

Shroom Steppers are unique in design and are a colorful, fun, addition to any playground. The Shroom Steppers are great for sitting and jumping and inspire the imagination. They are easy to install and can be placed anywhere on a playground or a park setting. The Shroom Steppers come in three different sizes and a variety of color combinations and various design options.



EPDM Top



ECO-FRIENDLY



LOW MAINTENANCE



MADE IN USA



RECYCLED



DURABLE



ADA ACCESSIBLE



SLIP RESISTANT



COST SAVING



SAFETY APPROVED

Rubber Designs
Shroom Steppers are
customizable.



Large
21" Height

Medium
17" Height

Small
13" Height














Rubber Designs
Standard Safety Tile

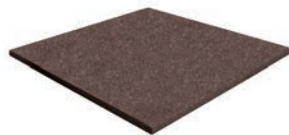
Standard Safety Tile

Rubber Designs Standard Safety Tiles have been tested for all required fall height attenuation and exceed ASTM and CPSC guidelines. Safety tiles are easy to maintain, will not mold or mildew, and have all of the characteristics of the Rubber Designs product lines. These tiles are aesthetically pleasing, and offer a simple way to repair and maintain high traffic areas. Rubber Designs offers standard and beveled edges and will help you determine what type of base or subsurface works best for each situation and budget. Available in various sizes and colors.

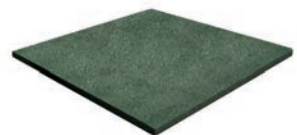


-  **MADE IN USA**
-  **RECYCLED**
-  **SLIP RESISTANT**
-  **ECO-FRIENDLY**
-  **LOW MAINTENANCE**
-  **DURABLE**
-  **ADA ACCESSIBLE**
-  **COST SAVING**
-  **SAFETY APPROVED**

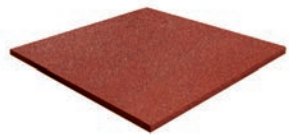
ST BL4306 - 2' x 2' x 1"
ST BL4300 - 2' x 2' x 2 1/4"



Brown



Green



Red



Black



Rubber Edging

Made of 100% recycled tire buffing, Rubber Designs Rubber Edging is the perfect solution for surfacing containment in any play or recreation area. Rubber Designs Edging is flexible enough to allow for a design with the least amount of surfacing, making any project more cost effective where curves and bends are not feasible with traditional landscape timbers.

Rubber Designs Rubber Edging is a great way to keep mulch secure within a space. Rubber Designs Edging design is compatible with any and all surfaces, giving each space a more finished appearance.

Contains attenuation properties, exceeds ASTM guidelines for fall heights and is slip-resistant.



RECYCLED



ECO-FRIENDLY



POUROUS



LOW MAINTENANCE



DURABLE



COST SAVING



SAFETY APPROVED



MADE IN USA

Applications:

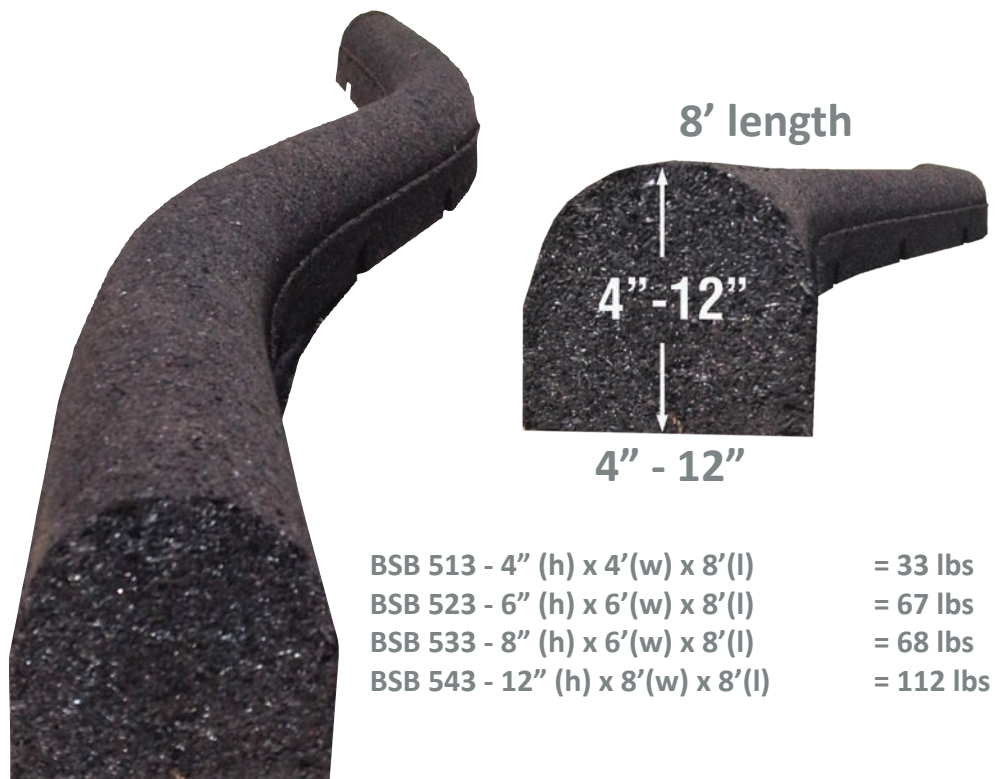
- Residential Playgrounds
- School Playgrounds
- Play Areas
- Commercial Landscaping
- Park & Recreation Setting
- Walking Trails and Pathways

Benefits:

- More Flexible than Wood or Plastic Borders
- Flexible Enough to make Organic Curves
- Slip-Resistant
- Positive Anchoring System
- Will not Crack, Chip, or Corrode
- Non-Toxic



Better for the earth. Better for you.



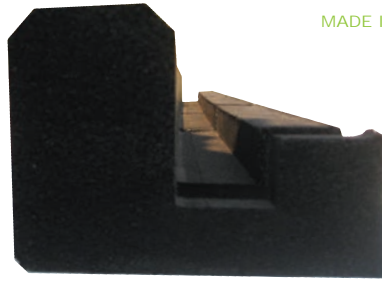
BSB 513 - 4" (h) x 4'(w) x 8'(l)	= 33 lbs
BSB 523 - 6" (h) x 6'(w) x 8'(l)	= 67 lbs
BSB 533 - 8" (h) x 6'(w) x 8'(l)	= 68 lbs
BSB 543 - 12" (h) x 8'(w) x 8'(l)	= 112 lbs

7' 9"
length

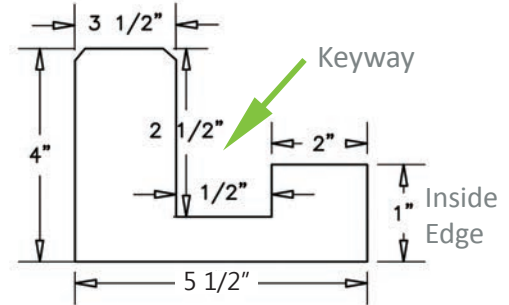


Rubber Designs J-Curb is designed to be used in conjunction with Rubber Designs Poured-in-Place Safety Surfacing and synthetic turf products. The compacted aggregate will finish flush with the inside edge of the J-Curb. The poured-in-place product or synthetic turf will cover the inside edge and roll down the keyway. This keyway allows the poured-in-place product or synthetic turf to be held securely to the curves, shapes, and bends.

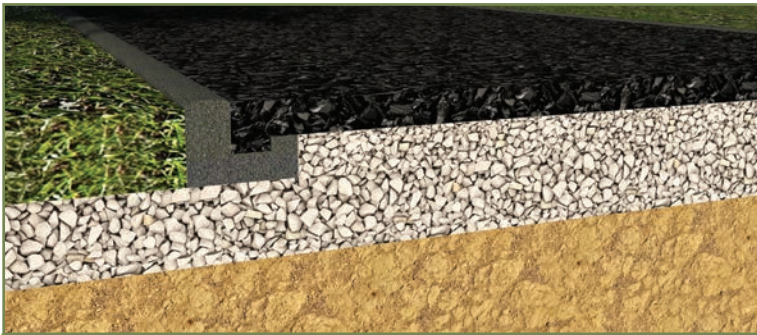
Rubber Designs J-Curb is the perfect solution for any pour-in-place surfacing containment.



BSB JB553 -
4" x 5 1/2" x 7' 9"
42 lbs



J-Curbs are available in these colors:



Black



Brown



10

Rubber Edging is available in these colors:

Brown



Green



Red



Black





Horse Arena Footing

Rubber Designs Loose Fill Rubber Mulch is a low maintenance, safe and attractive alternative to materials such as wood mulch, engineered wood fiber, sand and pea gravel and is perfect for the riding arena.

Rubber Designs rubber mulch is made from 100% recycled tire buffing. Due to its soft and springy bounce, rubber mulch is more comfortable, allows freer movement, reduces stress on joints, and is particularly beneficial for older and arthritic horses.

Properly installed, rubber mulch requires little maintenance compared to wood mulch and can last for 10 or more years. It allows water to pass through to the soil and does not attract insects, such as termites or carpenter ants.

Rubber Designs Loose Fill Rubber Mulch is long-lasting and durable, does not deteriorate, float away or splinter.



MADE IN USA



RECYCLED



ECO-FRIENDLY



ADA ACCESSIBLE



COST SAVING



SAFETY APPROVED



POUROUS



LOW MAINTENANCE



DURABLE



NO FABRICS



NO MOLD



NO STEEL



NO RUST



NO BACTERIA

Particle Size - Ranging from 3/8" to 2". The right combination and proportionate particle sizes, allows the finished product to weave and knit together.

Colorization - Colored using our unique color coating methods that will not delaminate over time. Once colored it is sealed with our formulated polymer wetting agent, bonding the pigments.

Benefits

- Enhances performance
- Provides shock absorption
- Reduces impact attenuation and injury risk
- Reduces long-term stress-related injuries
- Minimizes dust and mud
- Will not mold or mildew
- Discourages insect and rodent infestation
- Never rots or decomposes
- Doesn't erode, wash, or blow away
- Reduces maintenance time and costs
- 99.99% metal-free
- Never freezes
- Non-toxic
- All-season and weather-resistant



Available in these blends and single colors:



Rainbow
(mix of red/green/yellow)
RATB601- 50lb



Rustic
(mix of red/brown)
RUTB611- 50lb



Jungle
(mix of red/brown/yellow)
JUTB621- 50lb



Red



Green



Brown



Yellow



Cypress

Rubber Designs
Flagstone



Stall and Pathway Stones

Rubber Designs safety surfacing is developed with the safety of the horse and rider in mind. Most injuries to horses occur due to long-term stress, so early installation of an enhanced surface is critical for long-term health of the animals. Rubber-based equestrian surfaces provide optimum traction and shock-absorption that lessens the strain on horses and riders.

Rubber Designs Flagstone and Cobblestone is made from 100% recycled waste stream tire buffings as an environmentally friendly surfacing solution that renews, restores, and resurfaces large areas. Our superior quality construction provides a firm, slip-resistant surface, that can withstand the impact of horseshoes. Safe and low-impact for equestrian pathways, stable paths, hot walk tracks, and anywhere else durable horse footing is necessary. These products are non-toxic, easy to install, and maintain on any compacted or flat surface.

Benefits:

- Reduces impact attenuation and injury risk in rider falls
- Reduces long-term stress related injuries to horses and riders
- Reduces dust and mud
- Discourages insect and rodent infestation
- Durable, long-lasting material reduces replacement costs by thousands of dollars
- Never rots or decomposes
- Doesn't erode, wash, or blow away
- Reduces maintenance time and costs
- 99.99% metal-free
- Never freezes
- Improves performance
- Non-toxic



MADE IN USA



RECYCLED



ECO-FRIENDLY



POUROUS



SLIP RESISTANT



LOW MAINTENANCE



DURABLE



ADA ACCESSIBLE



COST SAVING



SAFETY APPROVED



Rubber Designs Flagstone is designed in harmony with the environment. It is a safe, lightweight, comfortable alternative to stone products. With a realistic look and texture, flagstone is designed for pathways, stables, and any area where durability and low-maintenance is a necessity.

The flagstone is produced from 100% commercial waste stream tire buffing. The look of real stone with the benefits of rubber, Rubber Designs Flagstone is available in full and half sizes.



Full Size - FS 300
36" x 18 x 1 1/2"
4 1/2 Square Feet
31 lbs

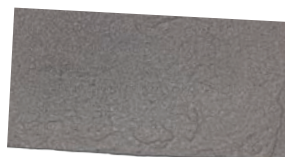


Half Size - FS310
18" x 18" x 1 1/2"
2 1/4 Square Feet
15 lbs

Red



Grey



Brown



Inspired by European cobblestone, Rubber Designs Cobblestone will transform any outdoor space. Our uncompromising quality and functional design provide excellent durability in high-traffic areas such as barn floors, pathways, and other high traffic areas.

The cobblestone will not crack, mold, or mildew, is wear resistant, and non-slip. Rubber Designs Cobblestone is available in full and half sizes.



Full Size - CS400
57" x 22"
8 1/2 square feet
35 lbs



Half Size - CS410
28.5" x 22"
4 1/2 square feet
17 lbs

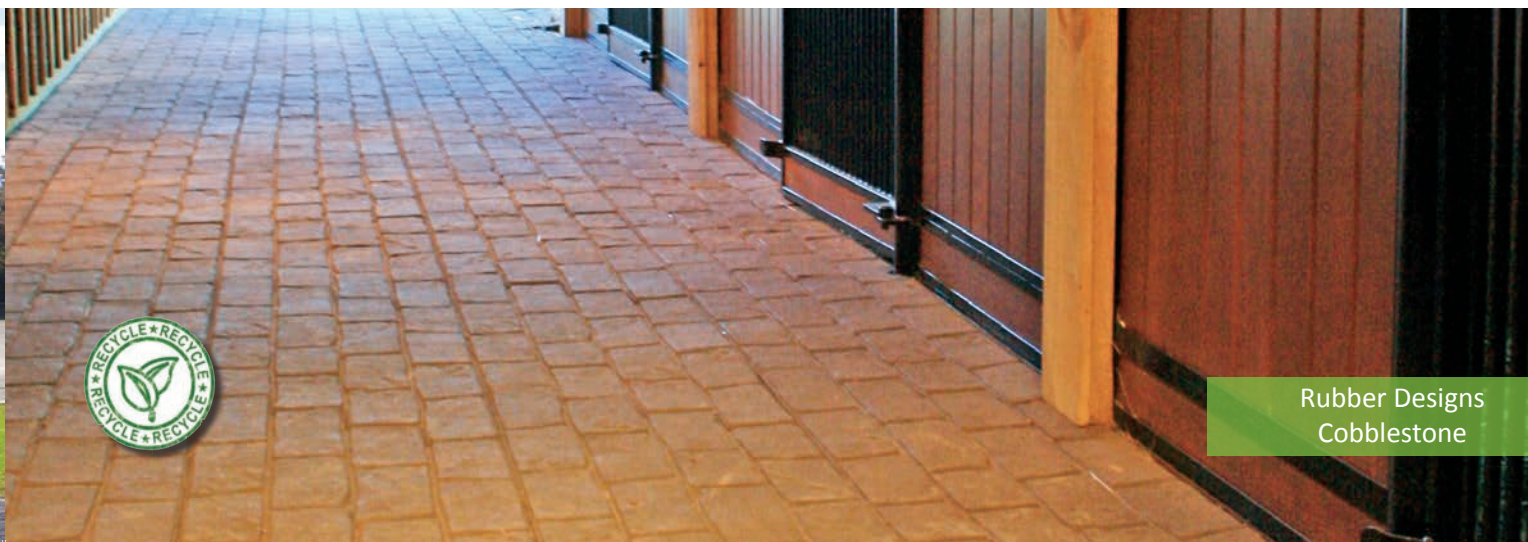
Red



Grey



Brown



Rubber Designs
Cobblestone



Gym Tiles/Bumpers/Platforms

Rubber Designs fitness products are designed to absorb the shock and noise of heavy free weights, gym equipment, and machinery. Placing the fitness tiles beneath exercise equipment reduces vibration and protects your floors from damage. Rubber Designs Fitness Tiles are a necessity when it comes to safety and preventing injuries due to poor surfacing.

These fitness products are anti-slip and keep your footing dry in damp conditions. They will not crack, tear, or wrinkle under pressure and are an excellent choice for any activity area that requires durability and safety.



MADE IN USA



RECYCLED



ECO-FRIENDLY



LOW MAINTENANCE



DURABLE



ADA ACCESSIBLE



COST SAVING



SAFETY APPROVED



SLIP RESISTANT

3/4" -

GT B4060 (50/50 EPDM)
GT 4090 (100 EPDM)

1" -

GT4 B4060 (50/50 EPDM)
GT4 4090 (100 EPDM)

1 1/4" -

GT2 B4060 (50/50 EPDM)
GT2 4090 (100 EPDM)

1 1/2" -

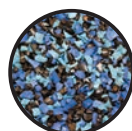
GT3 B4060 (50/50 EPDM)
GT3 4090 (100 EPDM)

2' x 2'
35 lbs.

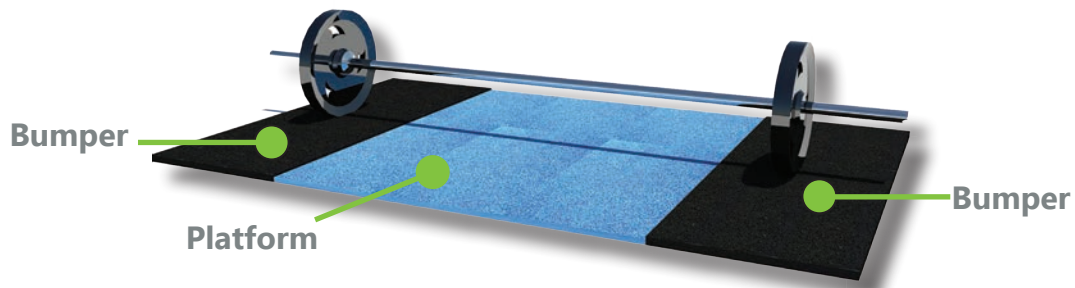
Thickness:
3/4", 1",
1 1/4", 1 1/2"



50/50 EPDM
50% Black /
50% Standard Color

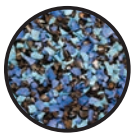


100% EPDM
Up to Three
Standard colors



Rubber Designs Gym Platforms- Platforms are a necessity in providing safety and comfort for any weight room or training center. The thick rubber platform is perfect for all Olympic-style weights, as well as kettle bells or dumbbell complexes. Platforms are available in 3 color combinations of 100% EPDM, 50/50 EPDM, and 100% standard buffing. Size: 48" x 74" and offered in thicknesses of 3/4", 1", 1 1/4", and 1 1/2".

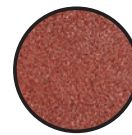
50/50 EPDM 3/4" - 100 EPDM 100 Buffing	1" - 50/50 EPDM 100 EPDM 100 Buffing	1 1/4" - 50/50 EPDM 100 EPDM 100 Buffing	1 1/2" - 50/50 EPDM 100 EPDM 100 Buffing
---	---	---	---



100% EPDM
Up to Three
Standard Colors



50/50 EPDM
50% Black /
50% Standard Color



100% Standard
One Standard
Buffing Color

Rubber Designs Gym Bumpers - Bumpers are often used in conjunction with a lifting platform. Rubber bumpers flank each side of the platform, keeping the weights from touching the floor. The combination of platform and bumper mats ensure maximum impact absorption. Bumpers are only available in a black buffing top and are offered in thicknesses of 3/4", 1", 1 1/4", and 1 1/2".

3/4" - Black
1" - Black

1 1/4" - Black
1 1/2" - Black

Standard Buffing Top Colors:



Standard EPDM Color Choices:





Rolled Flooring

Rubber Designs rolled rubber flooring mats offer the most value for your money. Made in America using recycled rubber collected from U.S. tires, it is an all-American, eco-friendly product. Rolled flooring comes in a variety of colors and sizes. In addition to the recycled rubber in its composition, this flooring contains EPDM rubber. EPDM gives the material a degree of UV protection, making it excellent for use outdoors.

Rolls are produced in a variety of thicknesses ranging from 2 mm to 10 mm. Whether choosing a thin and simple trailer mat or a thick and strong flooring for a gym, rolled flooring mats are a great flooring choice.

Easy to Install - Great for temporary or permanent use. For temporary uses, the weight of the mat itself is enough to keep it flat on the surface. Double-sided tape can be used for a temporary installation. For a permanent installation, a glue adhesive is ideal. The rubber material works very well with various adhesives.

Excellent Durability - Our rubber flooring mats are designed with abrasive conditions in mind. The rubber material of the mat will also buffer against the weight of heavy equipment, which can wreak havoc on wood floors. Lasting durability makes rolled rubber flooring, the preferred choice for floor protection across the country. This is a great option for budget conscious customers.

Rubber Designs rolled rubber flooring protects both the existing surfaces of your workout area and your exercise equipment. Gym equipment is often made of very heavy plastic and metal. Without protective mats in place, the sheer weight of these machines can grind down on sensitive surfaces and cause damage in the form of discoloration, markings, and serious cracks. Wooden flooring is especially susceptible to extensive damage. Even seemingly hard surfaces like concrete can suffer a degree of degradation. Remember, damage can go both ways. The friction created by an intense workout can also damage workout equipment. The cost of repairing damage to both existing surfaces and exercise equipment can be very high, which is why rolled rubber flooring is recommended for gym surfaces.



MADE IN USA



RECYCLED



ECO-FRIENDLY



LOW MAINTENANCE



DURABLE



ADA ACCESSIBLE



COST SAVING



SAFETY APPROVED



SLIP RESISTANT

Rolled Sheets:



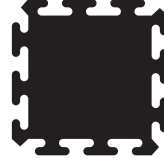
WIDTH: 3 ft. (0.91m) or 4 ft. (1.22m)
THICKNESS: 0.787 in. (2mm) to 0.3937 in. (10mm)
LENGTH: Lengths vary depending upon thickness

Square Tiles:



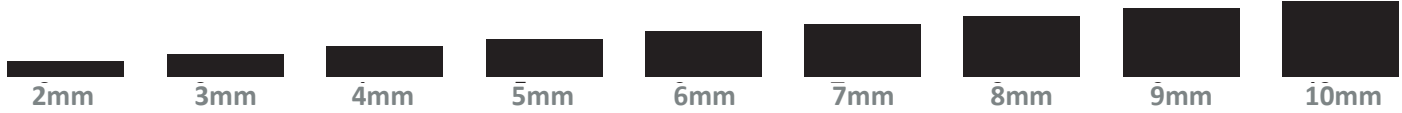
SIZES: 2 ft. x 2 ft. (0.61m x 0.61m)
3 ft. x 3 ft. (0.91m x 0.91m)

Interlocking Tiles:



SIZES: 3 ft. x 3 ft. (0.91m x 0.91m)

Flooring Thickness:



Flooring Standard Colors:





Loose Fill Rubber Mulch

Rubber Designs offers a low maintenance and cost-effective alternative for all of your landscaping needs with our Loose Fill Rubber Mulch.

Properly installed rubber mulch requires little maintenance and can last for 10 or more years, as compared to wood mulch, which is generally replaced each year. Loose fill rubber mulch allows water and fertilizer applications to pass through to the soil and will not attract insects, helping to protect your flowers, plants, and home from pests.

Rubber Designs Loose Fill Rubber Mulch is long-lasting and durable, will not deteriorate and does not float away or splinter. Great for residential or commercial use, rubber mulch is an attractive addition to landscaping.

Applications:

- Residential Landscaping
- Commercial Landscaping
- Loose and PIP Safety Play Surfaces
- Walking Trails and Pathways
- Tree Wells and Pits
- Erosion Control

Benefits:

- Absorbs "Shock"
- ADA Compliant
- Discourages Insects, Rodents, Mold, and Fungus
- Reduces Dust and Particulates



NO FABRICS



NO MOLD



NO STEEL



NO RUST



NO BACTERIA



MADE IN USA



RECYCLED



ECO-FRIENDLY



POUROUS



LOW MAINTENANCE



DURABLE



ADA ACCESSIBLE



COST SAVING



SAFETY APPROVED



Particle Size - Rubber Designs raw material originates as 100% recycled commercial waste stream rubber called OTR buffing. A buffing sieve analysis is performed prior to the materials being colored and bagged. We selectively classify our recycled buffing material, and carefully sort particle sizes ranging from 3/8" to 2". It is necessary to have the right combination and proportionate particle sizes so the finished product weaves and knits together by design.

Colorization - Rubber Designs rubber buffing material is colored using our unique color coating methods that will not delaminate over time. Rubber buffing, once colored, is sealed with our formulated polymer wetting agent, bonding the pigments definitively into each and every particle. Once fully blended, color types are proportionately mixed together and bagged for delivery.



Rainbow
(mix of red/green/yellow)
RATB601- 50lb



Rustic
(mix of red/brown)
RUTB611- 50lb



Jungle
(mix of red/brown/yellow)
JUTB621- 50lb



Red



Green



Brown



Yellow



Cypress

COST COMPARISON OVER A 10-YEAR LIFE EXPECTANCY



Rubber Designs
Better for the earth. Better for you.



Rubber Designs
Rubber Edging



Rubber Edging

Made of 100% recycled tire buffing, Rubber Designs Rubber Edging is the perfect solution for surfacing containment and border shaping in any landscaping area. The edging is flexible enough to allow for a design with the least amount of surfacing, making any project more cost effective where curves and bends are not feasible with traditional landscape timbers.

Rubber Designs Rubber Edging is a great way to keep mulch secure within a space. We can work with all surfaces and any ideas to make a space look professional and attractive.

Rubber Edging also contains attenuation properties and exceeds ASTM guidelines for fall heights. It's slip-resistance and lack of toxic preservers and splinters makes it safer for everyone.

					
ECO-FRIENDLY	POUROUS	LOW MAINTENANCE	DURABLE	COST SAVING	SAFETY APPROVED

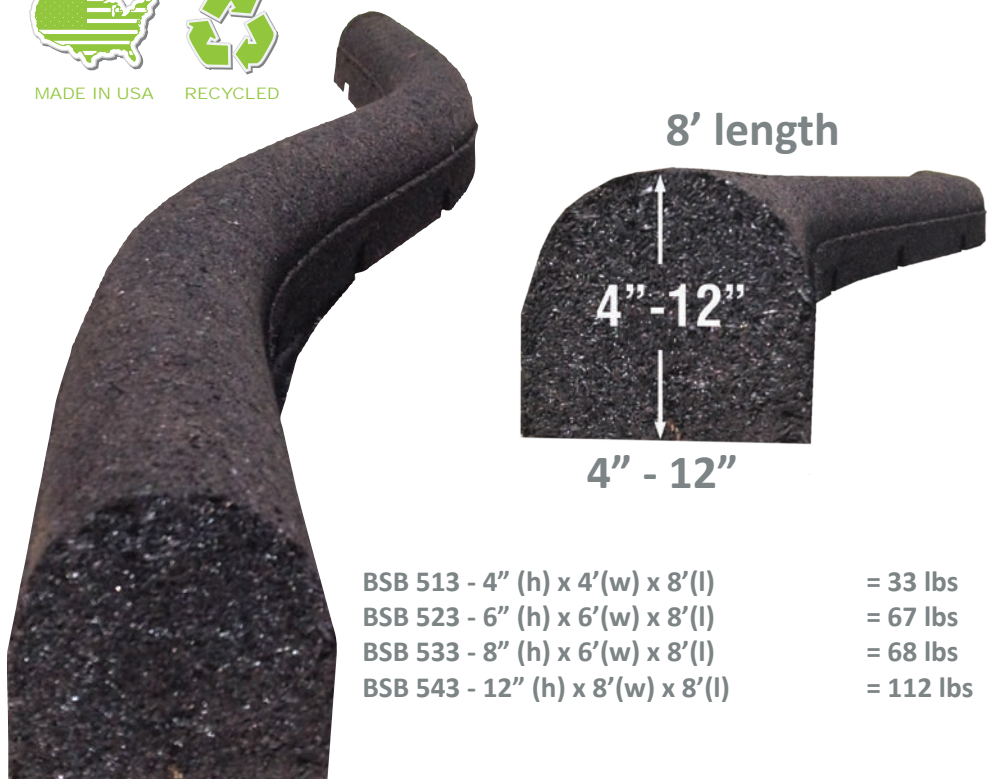
	
MADE IN USA	RECYCLED

Applications:

- Residential Playgrounds
- School Playgrounds
- Play Areas
- Commercial Landscaping
- Park & Recreation Setting
- Walking Trails and Pathways

Benefits:

- More Flexible than Wood or Plastic Borders
- Flexible Enough to make Organic Curves
- Slip-Resistant
- Positive Anchoring System
- Will not Crack, Chip, or Corrode
- Non-Toxic



8' length

4" - 12"

4" - 12"

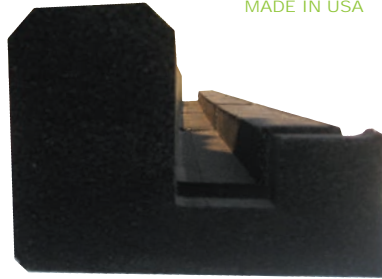
BSB 513 - 4" (h) x 4'(w) x 8'(l)	= 33 lbs
BSB 523 - 6" (h) x 6'(w) x 8'(l)	= 67 lbs
BSB 533 - 8" (h) x 6'(w) x 8'(l)	= 68 lbs
BSB 543 - 12" (h) x 8'(w) x 8'(l)	= 112 lbs

7' 9"
length

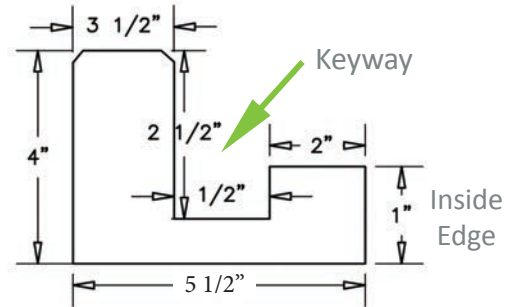


Rubber Designs J-Curb is designed for the use in conjunction with Rubber Designs poured-in-place safety surfacing and synthetic turf products. The compacted aggregate will finish flush with the inside edge of the J-Curb. The poured-in-place product or synthetic turf will cover the inside edge and roll down the keyway. This keyway allows the poured-in-place product or synthetic turf to be held securely to the curves, shapes, and bends.

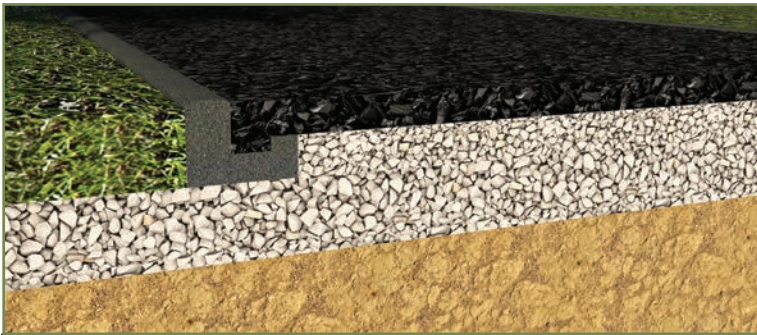
Rubber Designs J-Curb is the perfect solution for any pour-in-place surfacing containment.



BSB JB553 -
4" x 5 1/2" x 7' 9"
42 lbs



J-Curbs are available in these colors:



Black



Brown



Rubber Edging is available in these colors:

Brown



Green



Red



Black



Rubber Designs
J-Curb

Rubber Designs
Flagstone



Flagstone and Cobblestone

Rubber Designs landscaping stones are made from 100% recycled waste stream tire buffings. An environmentally friendly surfacing solution that renews, restores, and resurfaces large landscape areas. Superior quality construction provides a safe, low-impact surface for paths, steps, patios, stables and any other area where durability and low-maintenance is a necessity. The stones are easy to install and maintain on any compacted or flat surface.



MADE IN USA



RECYCLED



ECO-FRIENDLY



POUROUS



SLIP RESISTANT



LOW MAINTENANCE



DURABLE



ADA ACCESSIBLE



COST SAVING



SAFETY APPROVED

Applications:

- Residential Landscaping
- Commercial Landscaping
- Park & Recreation Setting
- Walking Trails and Pathways

Benefits:

- Reduces Dust and Mud
- Discourages Insect and Rodent Infestation
- Durable, Long-Lasting Material Reduces Replacement Costs by Thousands of Dollars
- Never Rots or Decomposes
- Doesn't Erode, Wash, or Blow Away
- Reduces Maintenance Time and Costs
- 99.99% Metal-Free
- Never Freezes
- Improves Performance
- Non-Toxic



Rubber Designs Flagstone is designed in harmony with the environment. It is a safe, lightweight, comfortable alternative to stone products. With a realistic look and texture, our flagstone adds beauty to your landscape.

The flagstone is produced from 100% commercial waste stream tire buffing. The look of real stone with the benefits of rubber, Rubber Designs Flagstone is available in full and half sizes.



Full Size - FS 300
36" x 18 x 1 1/2"
4 1/2 square feet
31 lbs



Half Size - FS310
18" x 18" x 1 1/2"
2 1/4 square feet
15 lbs

Red



Grey



Brown



Inspired by European cobblestone, Rubber Designs Cobblestone will transform any outdoor space. Our uncompromising quality and functional design provide excellent durability in high-traffic areas. Rubber Designs Cobblestone offers amazing comfort, is easy to install and maintain.

The cobblestone will not crack, mold, or mildew, is wear resistant, and non-slip. Rubber Designs Cobblestone is available in full and half sizes.



Full Size - CS400
57" x 22"
8 1/2 square feet
35 lbs



Half Size - CS410
28.5" x 22"
4 1/2 square feet
17 lbs

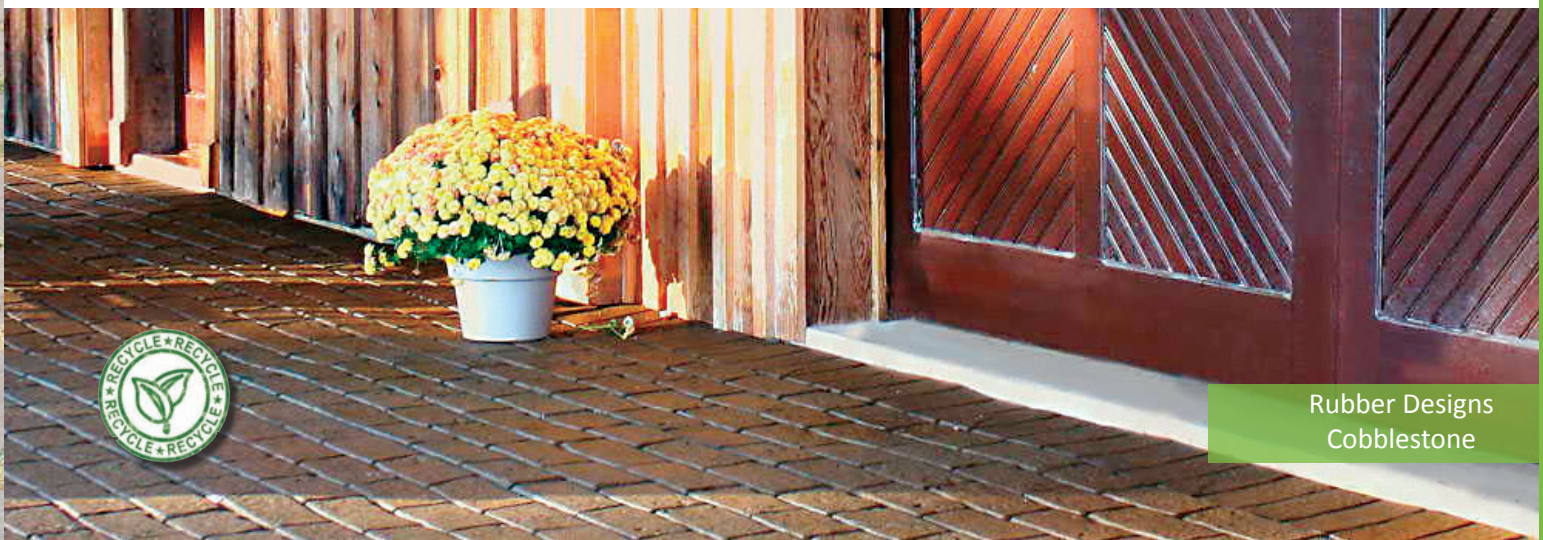
Red



Grey



Brown



Rubber Designs
Cobblestone



Flexstone

Rubber Designs Flexstone enhances the natural look of stepping stones when placed in outdoor pathways, gardens, and ornamental landscape applications. The Flexstone is designed to be a light-weight and cost effective replacement for natural stepping stones. It is easy to install, will not crack, mold or mildew. Flexstone comes in three different colors and shapes (square, rectangle, oval) and is an excellent, sustainable, recycled product.

Square
Weights 5 lbs



Red
FXR200

Rectangle
Weights 5 lbs



Grey
FXR200

Oval
Weights 5 lbs



Brown
FXR200



MADE IN USA



RECYCLED



ECO-FRIENDLY



POUROUS



SLIP RESISTANT



LOW MAINTENANCE



DURABLE



ADA ACCESSIBLE



COST SAVING



SAFETY APPROVED



Rubber Designs Pre-Formed Rubber Tree Rings

Pre-Formed Rubber Tree Rings

Rubber Designs Rubber Tree Rings are the perfect compliment to any landscaping project. Our rubber tree rings allow water and nutrients to pass through, helping to prevent weed growth, fungal growth and erosion. Made from 100% recycled waste stream tire buffings, Rubber Designs puts the GREEN in your garden.

Pre-cut to the center to make handling and installation easy.

With the ability to mow right over the tree rings, less time and money will be wasted in landscape maintenance.

Available in multiple colors, two shapes and three sizes.



Rainbow
(mix of red/green/yellow)
RATB601- 50lb



Rustic
(mix of red/brown)
RUTB611- 50lb



Jungle
(mix of red/brown/yellow)
JUTB621- 50lb



MADE IN USA



RECYCLED



ECO-FRIENDLY



ADA ACCESSIBLE



COST SAVING



SAFETY APPROVED



POUROUS



LOW MAINTENANCE



DURABLE



Red



Green



Brown



Yellow



Cypress

Available Tree Ring Shapes:
Round and Square

Tree Ring Sizes:
30", 48", 60"

Artificial Grass

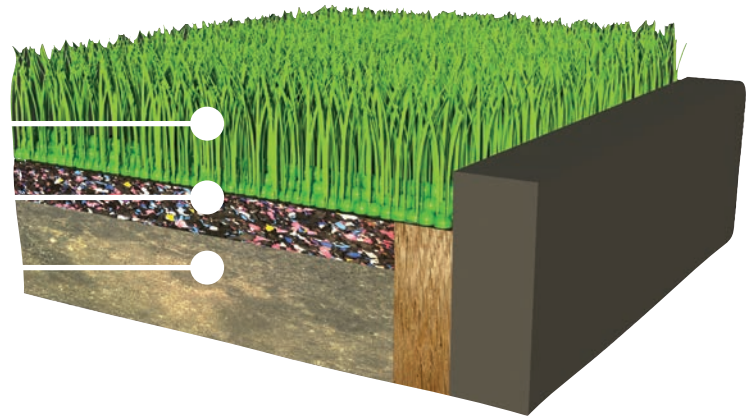
Now offering artificial grass as a landscaping solution, Rubber Designs Artificial Grass is made with 20% more fiber than our competitors, creating a more durable and natural looking grass.

Rubber Designs Artificial Grass is engineered for climates where constant direct sunshine and UV rays require additional UV stability. All have varying heights and are tufted into 2 layers of backing, polypropylene as the primary backing and urethane as the secondary coating, with standard perforations for drainage. Rubber Designs recommends the use of infill in all turf products as it will enhance both the visual aspect as well as the performance characteristics, including durability.

This synthetic grass line has proven to be an ideal lawn choice for projects large and small.

- 15 ft wide rolls at desired pile height with a minimum order of 1'x15' section of turf
- 3D cool fibers, dual color blades that are UV stabilized to keep colors natural and fresh, wheat thatch for a natural appearance
- Indoor/outdoor use for pet areas, RV areas, difficult to grow areas, game rooms, patios, poolside and more
- Will not stain or hold odors from pets or chlorine
- Residential and commercial uses
- Turf can be easily cut from the backing to carry into place prior to installation
- Incredibly soft, non compression blade spine

Artificial Grass
Foam Pad
Compacted Sub-Base



MADE IN USA



POUROS



DURABLE



ADA ACCESSIBLE



SAFETY APPROVED

Supreme SDS

Supreme SDS is an excellent low maintenance option for high traffic areas, playgrounds, pet areas, and landscaping applications. The 320 micron PE Monofilament and thatch zone consisting of a texturized 150 micron Field Green PE Monofilament, uses a combined total of 69 oz. per sq. yd. The pile height on Supreme SDS Artificial Grass is 1 1/4" and is tufted on 3/8" gauge. There are 2 layers of backing, polypropylene and non-woven fabrics as the primary backing, and urethane as the secondary backing. Perforations for drainage are standard. Rubber Designs recommends the use of infill in all turf products as it will enhance both the visual and the performance characteristics, including durability.

Available in 2 Stocking Colors:



Field Green

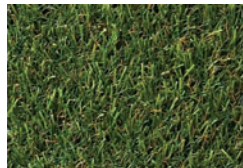


Spring

Artificial Grass PP60 & PP80

Rubber Designs Artificial Grass PP60 & PP80 are used in landscaping and playground applications. PP60 is 60 oz. and PP80 80 oz. of PE Monofilament tufted on 1/2" gauge with a 1 3/4" pile height and are tufted into 2 layers of polybac, 1 at 13 and 1 at 18 pic as the primary backing. There is 20 oz. of urethane as the secondary coating. All have standard perforations for drainage. PP80 has a higher density than PP60. Rubber Designs recommends the use of infill in all turf products as it will enhance both the visual and the performance characteristics, including durability.

Available in 2 Stocking Colors:



Fescue

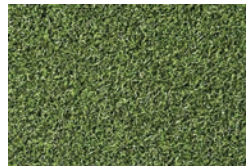


Spring

Artificial Turf Putting Green

Rubber Designs Artificial Turf Putting Green is the perfect surface for modern putting greens. Artificial Turf is 36 oz. per sq/yd of texturized nylon, tufted on 3/16" gauge with a 1/2" pile height. There are 2 layers of primary backing, polypropylene and non-woven fabrics to give it a superb feel and 'lift'. Warrantied for 8 years; artificial turf is the perfect solution for putting green installation.

Available in 1 Stocking Color:



Verde Green

Foam Insulation

Foam insulation can be used in literally 100's of applications from drainage systems, to general construction, to pet areas. Its shock absorbing, durable nature, makes it ideal for multiple applications, from recreation fields, equestrian stables, fatigue relief on assembly lines, to packaging material. Its sound absorption qualities make it ideal as sound barriers along highways, home theater rooms, and other industrial applications. Light density foam, 4-7 lbs. per cubic foot, is very popular as a cushion and drainage layer underneath artificial grass.



Rubber Designs
EPDM Poured-In-Place

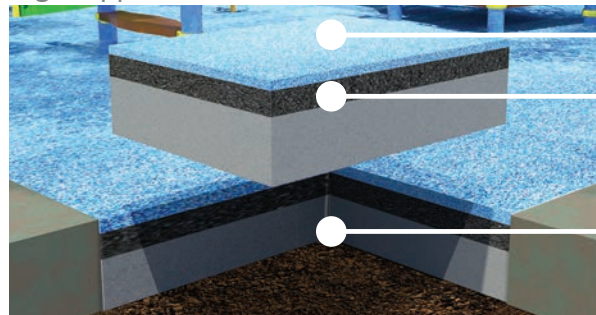
EPDM Poured-In-Place

Rubber Designs EPDM Poured-in-Place Safety Surfacing is a versatile safety surfacing option. It is a unitary surface that is seamless, functional, and aesthetically pleasing. When applied to critical fall height zones, EPDM safety surfacing conforms to the guidelines set by the CPSC for use in and around playgrounds.

The system consists of two layers. The first layer is the base layer (cushion course) or the impact attenuation layer. This consists of shredded tire buffings from 100% waste stream content. The second layer is the wear layer (wear course). This usually consists of EPDM granules that act as a barrier between kids and the cushion course.



Rubber Designs EPDM Pour-in-Place Safety Surfacing is applied in various thicknesses determined by fall height requirements for use in playground projects and is also used in other recreational environments as a non-slip surface for pool decks, walk paths, and water features in fun parks.



Wear Course
(1/2" EPDM Top)

Cushion Course
(Varying Depths depending on your fall height requirement)

Sub-Base

Each project is a unique application. Our highly trained and experienced installers can create nearly any shape, size, and colored surface.

Custom inlay designs can be created as part of your surfacing project. EPDM can be ordered and fully installed by the square foot or as raw materials for installation by your own crew.

Standard EPDM Color Choices





Rubber Designs
Bonded Rubber Mulch

Bonded Rubber Mulch

Rubber Designs Bonded Rubber Mulch Safety Surfacing is a one step pour that provides a cost-effective, long-lasting, safe, and durable option for any playground or park setting.



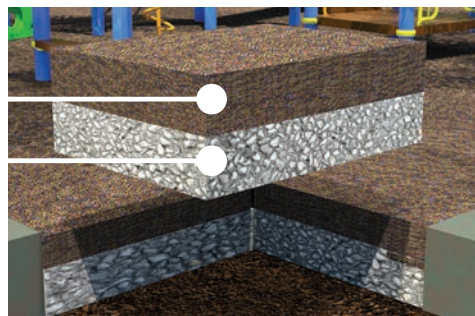
Bonded Rubber Mulch is a single layer system that can be poured in various thicknesses depending on the fall height requirement and offers the convenience of a one day installation.

Rubber Designs safety surfacing has shock absorbing properties. It is also in accordance with the procedures outlined in ASTM F-1292-96 and ASTM F-1951-99, conforming to standard specifications for impact attenuation of surfaces under and around playground equipment.

Rubber Designs Bonded Rubber Mulch offers a seamless, anti-fatigue surface that is perfect for any playground, and is also a great low-maintenance landscaping option.

PIP Mulch

Sub-Base



Rainbow
(mix of red/green/yellow)
RATB601- 50lb



Rustic
(mix of red/brown)
RUTB611- 50lb



Jungle
(mix of red/brown/yellow)
JUTB621- 50lb



MADE IN USA



RECYCLED



ECO-FRIENDLY



SLIP RESISTANT



ADA ACCESSIBLE



COST SAVING



SAFETY APPROVED



POUROUS



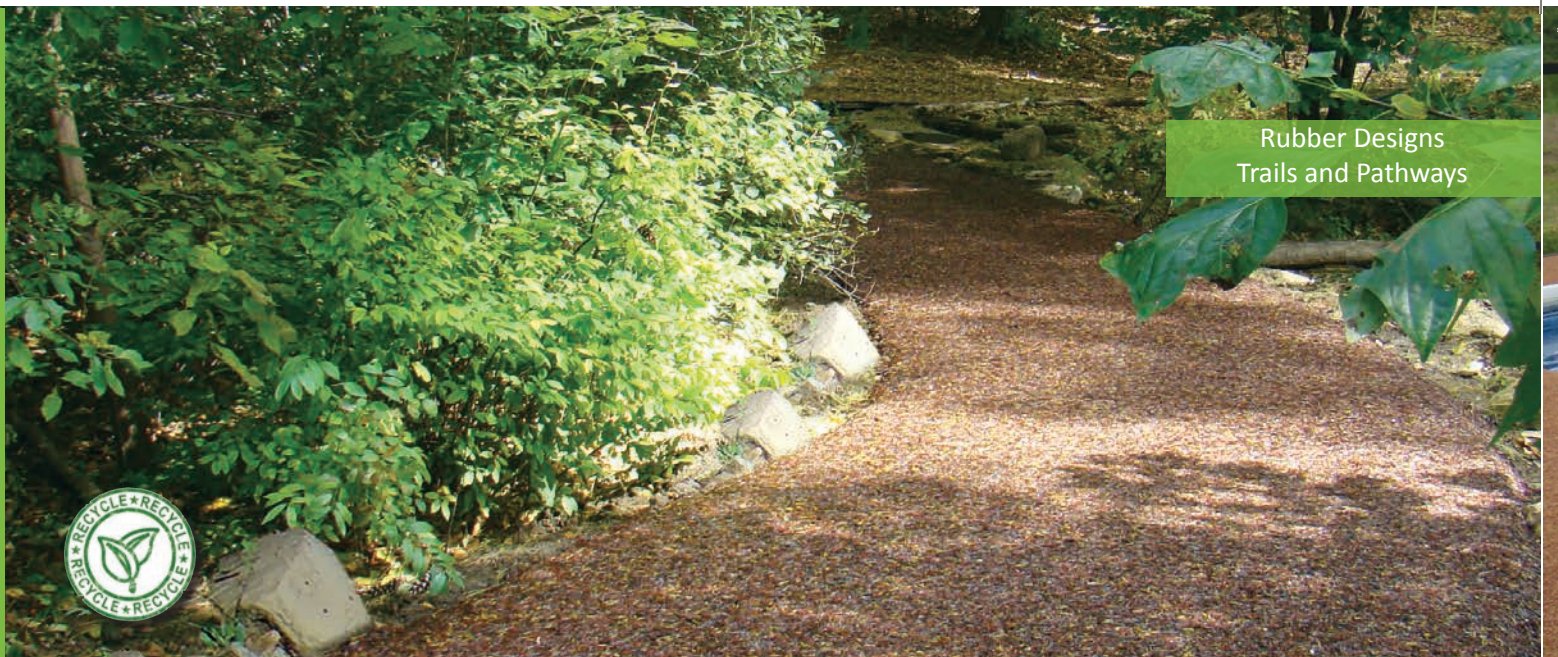
LOW MAINTENANCE



DURABLE

Rubber Mulch PIP
Fall Height Rating





Rubber Designs
Trails and Pathways

Rubber Trails and Pathways

Rubber Designs Rubber Trails are made from 100% recycled tire buffing. This rubber surfacing is a custom application of our Rubber Designs Loose Fill Rubber Mulch in a permanent polyurethane adhesive. These rubber trails are designed to offer pedestrians and joggers a pathway with good traction and shock absorption due to its low-impact, firm, rubber surface.

The poured, seamless system provides a safe and attractive option for trail and pathway systems that beautifies park and recreation centers. The surface is durable enough for strollers, wheel-chairs, bicycles, and light duty vehicles.

The tensile strength properties provide long-term durability and the rubber is derived from refined, recycled tires that are free of metal. These materials are pigmented to replicate the appearance of a natural walking trail.



Rubber Designs Rubber Trails are designed as an anti-fatigue surface. These trails provide a comfortable walking surface versus traditional walking surfaces, such as concrete and asphalt.

The durable design of Rubber Designs Rubber Trails will hold up under high traffic conditions. The surface exceeds procedure CRI TM-101 (wear retention testing of 20,000 foot traffic counts) with no change to the appearance or dispersion.

- 
MADE IN USA
- 
RECYCLED
- 
ECO-FRIENDLY
- 
ADA ACCESSIBLE
- 
COST SAVING
- 
SAFETY APPROVED
- 
POUROUS
- 
LOW MAINTENANCE
- 
DURABLE



Rainbow
(mix of red/green/yellow)
RATB601- 50lb



Rustic
(mix of red/brown)
RUTB611- 50lb



Jungle
(mix of red/brown/yellow)
JUTB621- 50lb



EPDM Granules

Rubber Designs EPDM Granules are seamless, functional, and an aesthetically pleasing safety surface option. When applied to critical fall height zones, Rubber Designs EPDM Safety Surfacing conforms to the guidelines set by the CPSC for use in and around playgrounds and recreational areas.

EPDM Granules are available in a range of molecular weights and colors. Black granules are free from SBR fillers and are guaranteed to be 100% EPDM. EPDM granules can also be used safely in any water feature and around pools.



Standard EPDM Color Choices



EPDM Patch Kits



These repair kits are perfect for facility managers, owners, and maintenance personnel looking to solve worn surface problems without breaking the budget. You can repair small damaged areas on poured-in-place playground surfaces, running tracks, under swings, slides, and other high traffic areas. The EPDM patch kit is available in all standard colors and four 50/50 color blends. Each repair kit is pre-packaged with the correct amount of binder and rubber granules. These materials are mixed on site and applied after a simple preparation and clean up.

EPDM Repair Kit
Covers 5 sq. ft.



Aromatic Urethane

Industrial Aromatic Urethane can be used as a binder in a variety of recycling applications, bonding together different kinds of shredded materials such as rubber, EPDM, flexible polyurethane foams, EVA, cork, and gravel. Our binders are based on prepolymer technology and expertise.

Aliphatic Urethane

Industrial Aliphatic Urethane can be used as a binder just as the Aromatic Urethane, however, this application is clear, UV resistant, and non-yellowing. Aliphatic Urethane is specifically for use on bold and bright recycled materials such as Rubber Designs EPDM Safety Surfacing.

- Surfaces made with our binder have the strongest track record of quality in the industry.
- Our binder is one of the strongest available.
- Our binders are guaranteed to be free of extender oils, and filler, such as plasticizers and heavy metals used by others to volumize yields.
- Our binder uses only premium raw materials, the only urethane produced of pure isocyanates.



Aromatic Pail - AR55200-P
Aliphatic Pail - AL56200-P



MADE IN USA



Aromatic Drum - AR55200-D
Aliphatic Drum - AL56200-D

Extend-A-Life

Over time, the sun's UV light can fade the color and surface integrity of safety surfaces. By using Extend-A-Life, the damage from the sun can be reversed. Extend-A-Life helps reduce the temperature of playground surfaces, allowing the surface to last longer while also staying cooler to the touch.

Proper maintenance is important for extending the life of valuable safety surfaces. Rubber Designs has developed an advanced Green co-polymer that easily rejuvenates and revitalizes older rubberized playground surfaces and improves color.



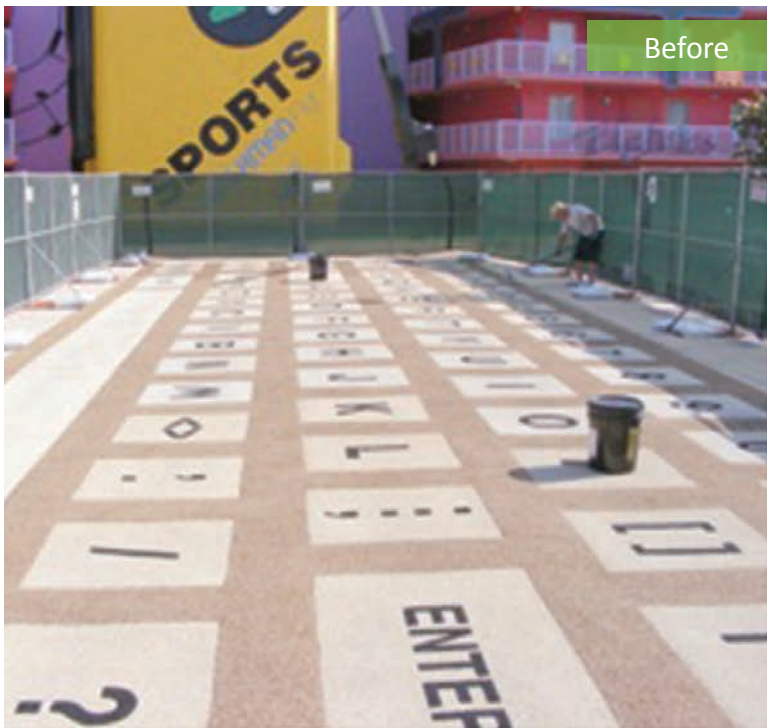
MADE IN USA



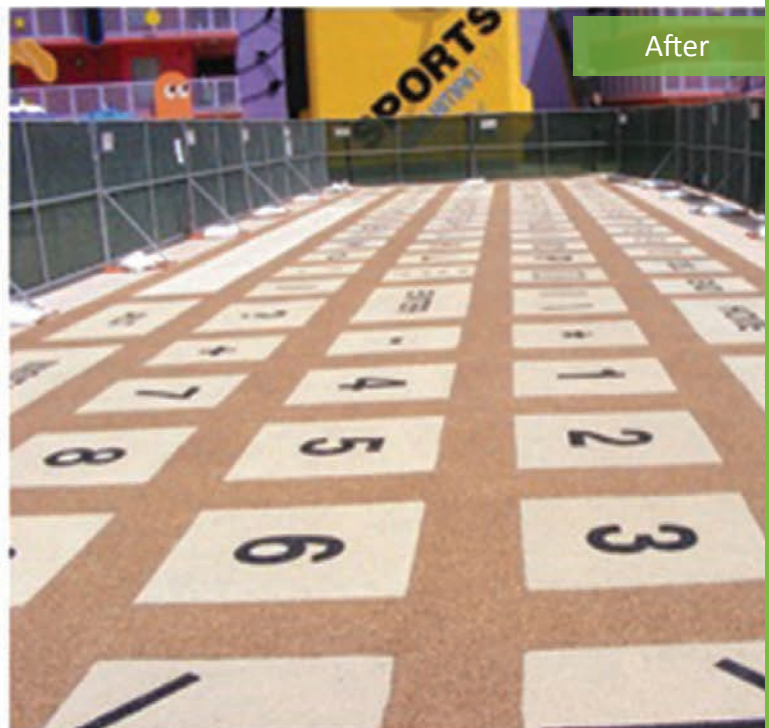
COST SAVING



PRODUCT	GALLONS NEEDED	PAILS REQUIRED	ESTIMATED COVERAGE
Extend-A-Life	5	1	1500 sq. ft.
Extend-A-Life	10	2	3000 sq. ft.
Extend-A-Life	15	3	4500 sq. ft.
Extend-A-Life	20	4	6000 sq. ft.
Extend-A-Life	25	5	7500 sq. ft.



Before



After



Safety Bumper Guard

Safety Bumper Guards are designed to protect surfaces, reduce impact damage, and protect against accidental injuries caused by sharp corners or edges.

Safety Bumper Guards are constructed with recycled rubber buffings to allow flexibility and durability in any environment. Recycled rubber provides a soft, non-toxic, safe, and eco-friendly solution. Safety Bumper Guards resist dents, scratches, and other damages for maintenance-free dependability that increases safety while reducing costs. A specially designed groove allows for quick and easy installation.

The Safety Bumper Guard can also be used in a commercial environment where extra protection is needed to prevent damage caused by unintentional impacts with window sills, wall edges, pillars, and stairs. Safety Bumper Guards can be installed with multiple units in a “stacked” mode for protection from large commercial equipment such as scissor-lifts, raised forklifts, and other high-reaching equipment.

Available with adhesive or tie-wraps.

Dimensions: 47” (l) x 2.5” (w) x 2.5” (h)



MADE IN USA



RECYCLED



ECO-FRIENDLY



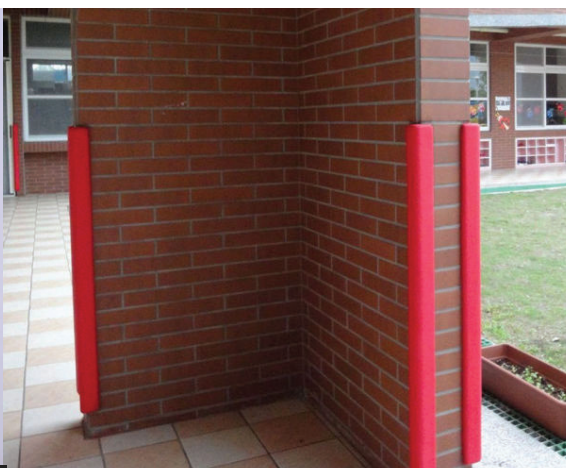
LOW MAINTENANCE



DURABLE



SAFETY APPROVED





Rubber Designs
Golf Mats

Golf Mats

Practice golf mats can be manufactured for commercial or residential use. Our golf mats have a flex divot top surface which accurately recreates the effects of playing off a natural fairway.

Vijay Singh Golf Mat

46 1/2" (l) x 18 3/8" (w) x 2" (h)



- 
MADE IN USA
- 
RECYCLED
- 
ECO - FRIENDLY
- 
LOW MAINTENANCE
- 
DURABLE
- 
SAFETY APPROVED

Downspout Splash Block

Rubber Designs Downspout Splash Block helps with water erosion and gutter run-off away from your foundation or landscape. It is an eco-friendly solution that provides drainage from your gutter downspout. It will not mold, mildew, and resists fading. Made from 100% recycled waste stream.



Downspout Block pictured in: Brown



Black



Red



Green

Rubber Designs can create any custom molding job or special project with a degree of excellence that surpasses expectations. If you have an original idea, Rubber Designs can make it happen!

Our Services

Rubber Designs offers installation services for any of our rubber products that require installation, from EPDM poured-in-place to Bonded Rubber Trails. Our surfacing installation services provide expert installation for a variety of excavation site work that includes (but is not limited to): concrete sides, concrete sidewalks, compacted crushed stone sub base, etc. From small scale installation of Rubber Edging and Tree Rings, to large scale Bonded Rubber Trails, our overriding goal is to produce the perfect design to fit your budget, space, and needs. Rubber Designs has expert installers that know how to bring your design to reality. With our focus on the success of your project, our professional installations will comply with all of the specifications your project requires as well as any special requirements stipulated for the project.

Platinum Plus Tile Program

Rubber Designs is proud to offer the “**Platinum Plus Certified Tile Installation Program**” to our customers. The program offers solutions that are a competitive alternative to traditional safety surfacing, including extra benefits, tools, discounts, and warranties. The program will increase your profits, decrease time and project management, and ensure on-time job execution and completion.

- Certified Turn-Key Installation Management
- Certified Installers
- Project Management
- Program Discounts
- Additional Warranties
- Profitability
- Platinum Plus Job Calculation Tool
- Platinum Plus Site Preparation Checklist
- Walk-Through Inspections
- Certificates of Completion

Certified Turn-Key Installation Management

Your products are installed by insured and trained certified factory installers, superintendents, and laborers. With this combined expertise, we will manage the project from start to finish. From the scheduling, material delivery, work crew and equipment, we make sure the installation is complete, correct, on-time and on budget. We do all the work so you can enjoy the benefits!

Certified Installers

Using our certified installers prevents third-party liability. With our experience and expertise, we provide quality workmanship along with quality installation.

Program Discounts

The Platinum Plus Program will increase your profitability by offering an additional 5% discount on materials and installation.

Additional Warranties

With the Platinum Plus Program, you will receive a (10) ten year limited warranty on the product and a (1) one year manufacturer’s certified installation warranty.

Platinum Plus Job Calculation Tool

The Platinum Plus Job Calculation Tool is an easy-to-use calculator we provide that assists in the understanding of the dimensions of your project. You will see the number of tiles, corners, ramps and u-locks that are needed to complete the site. We provide all details down to the amount of joint glue required, number of pole cuts and perimeter cuts, and necessary freight or shipping to the job site.

**This program is available for all orders over 500 tile quantities.*

Surface Drop Test

Thousands of children are injured each year on playgrounds throughout the world. In the U.S., approximately 200,000 children are injured annually and about 70% of these injuries involve a fall to the playground surface. The safety surfacing you choose can be a major factor in determining the injury-causing potential of a fall.

Using the Triax 2000, Rubber Designs will conduct impact attenuation testing on any rubber surface to ensure that your surfacing is meeting required guidelines. The test normally takes 1 1/2 hours per play area.

What is impact attenuation?

All surfacing used in play areas must comply with the requirements of ASTM F1292 Standard Specification for Impact Attenuation of Surface Systems under and around playground equipment. Man-made surfacing materials like engineered wood fiber, poured-in-place surfacing, rubber tiles and loose fill rubber products are to be lab tested for impact attenuation. The lab test will indicate the critical height that the product protects. Specific thicknesses, or depth of material, will be listed for specific critical heights. When purchasing these products, be sure to select one that will protect children from a fall equal to or exceeding the fall height of the equipment.



How is impact testing done?

ASTM F1292 requires that at least three impact sites be tested in each play area. The Triax 2000 tripod is dropped from the fall height of the play equipment three times at each impact test site. The test results from the drops at each site are averaged and recorded. The head form of the Triax 2000 is attached to a hand held device that records the G-max and HIC values of each drop.

The G-max is the maximum deceleration of gravity. The HIC is Head Impact Criteria or the measure of impact severity and duration. The G-max reading must be less than 200 and the HIC reading must be less than 1000.



Sample Packages

For your specialty branded product, sampling, or special promotions—consider Rubber Designs sample packages for your marketing efforts. We offer sample packages to provide a quick visual of our products. Our promotional sample packages are a great way to demonstrate the products.

COMPLETE SAMPLE BOX CAN INCLUDE:

- Product Samplings of Interlocking Tiles
- Product Samplings of PIP Mulch and EPDM (with and without base)
- Products Samplings of Rubber Mulch in 3-color blends
- Interlocking Tile Sample Colors
- EPDM Color Cube for EPDM Tile Tops and EPDM PIP



INTERLOCKING TILE SAMPLE BOX CAN INCLUDE:

- Product Samplings of Interlocking Tiles
- Interlocking Tile Sample Colors
- EPDM Color Cube for EPDM Tile Tops and EPDM PIP

Our sample packages can accommodate a full range of product categories. We can assist with product solutions for types of pouches and packages, printed brand identification and sourcing of all package and content materials.



Authorized Dealer

RECREATION
TODAY



OUR PROJECT IS YOUR
PLAYGROUND

2414 E Railroad St
Nampa, ID 83687

208.442.9350 or 800.481.8705

info@rectoday.net | www.rectoday.net

Rubber Designs 
Better for the earth. Better for you.

3125 Skyway Circle | Melbourne, FL 32934

877.978.2237 | (Fax) 706.334.2403

info@rubberdesigns.com

rubberdesigns.com