



# AMERICANA

## OUTDOORS

Elements for Life *Outside*.™



WWW.AMERICANA.COM

# Who we are

Americana is a family-owned company making high-quality recreational amenities for communities across the country. Our products are American-made and engineered to meet the demands of outdoor living. From shelters and seating to sports equipment, Americana offers architects, general contractors and other clients a full range of beautiful and fully customizable furnishings to create a complete outdoor environment that helps communities work, play and live better.

## Pillars of Distinction



### Engineering for Outdoor Living

We build products for every climate, every terrain and every purpose to meet the demands of outdoor living.



### Shaping an Entire Outdoor Experience

From shelters and seating to sports equipment, Americana creates complete outdoor environments that help communities work, play, and live better.



### Providing Service that Comes Naturally

At Americana everyone is family and our clients are friends. When you care about the people around you and love what you do, great and knowledgeable service just comes naturally.



**4-5**

**HIP ROOF STRUCTURES**  
NAVAJO SERIES  
MOJAVE SERIES



**6-11**

**GABLE ROOF STRUCTURES**  
ILLINI SERIES  
MERAMEC SERIES  
COLONIAL SERIES



**12-15**

**GAZEBOS**  
APACHE SERIES  
AZTEC SERIES



**16-19**

**SMALL SHADE STRUCTURES**  
CHEROKEE SERIES  
ALGONQUIN SERIES



**20-23**

**SUNSHADE STRUCTURES**  
PERGOLAS  
SHADE SAIL SERIES



**24-27**

**WALKWAYS & ENTRANCES**  
WALKWAYS  
ENTRYWAY COVERS



**28-29**

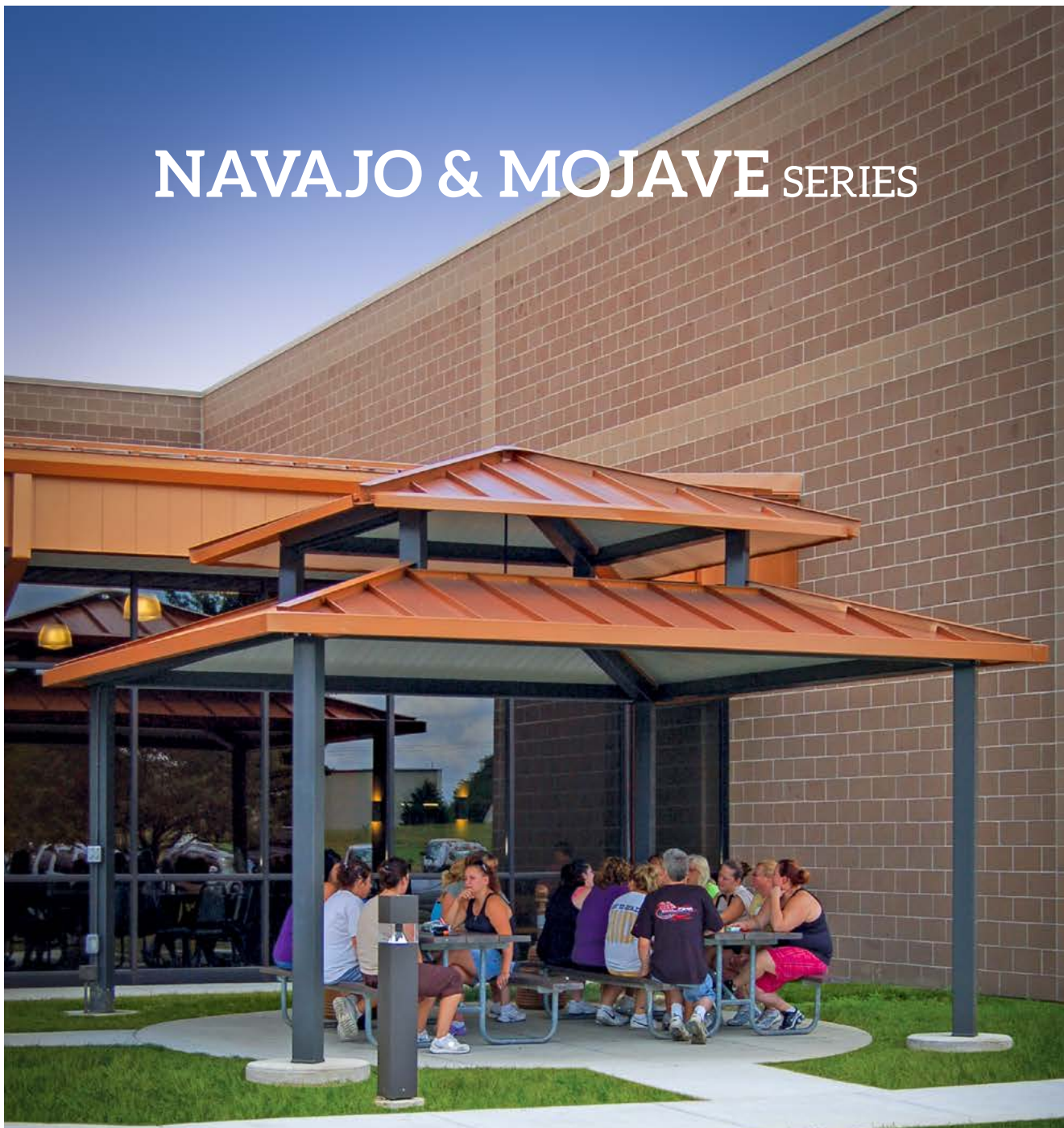
**SPORTS STRUCTURES**  
SHAWNEE SERIES



**30-35**

**INFORMATION**  
OPTIONS & ACCESSORIES  
FRAME STYLE & FINISHES  
COLOR OPTIONS  
SUPPORT & WARRANTY  
SITE FURNISHINGS

# NAVAJO & MOJAVE SERIES




## FEATURED PROJECT

*Harley Davidson Manufacturing Break Area*

 **Structure:** 18x18' Double Tier Navajo Shelters

 **Location:** Wentzville, Missouri

 **Design Notes:** 18" Standing Seam Roof Panels

**Frame Color:** 510 Black

 **Roof Color:** 860 Copper Penny

# NAVAJO & MOJAVE PRODUCT FEATURES



**Sizes:** 12x12' minimum, extended sizes up to 40x60'

**Roof Pitch:** Standard 4/12

**Optional Roof Pitch:** 6/12

**Structure:** Four sided pre-fabricated, powder coated steel frame

**Frame:** Tubular

**Gutters:** Standard extruded aluminum on Navajo models, Mojave models are gutterless

**Roof:** Structural, interlocking panels for superior strength with less supports

**Standard Roof Panels:** 24" wide "W" design in high strength aluminum or galvalume

**Optional Roof Panels:** 36" galvalume "R" panel, 8" aluminum flat panel, 3" sandwich panel, 18" wide standing seam panel, and tongue & groove wood with shingles

**Add-On Accessories:** Cupola, double tier roof, dutch hip roof, aluminum railing



# ILLINI SERIES



## FEATURED PROJECT

*Renfro Middle School Lunch Area*



**Structure:** 14x20' Illini Shelter



**Location:** Collinsville, Illinois



**Design Notes:** 24" Structural "W" Roof Panels



**Frame Color:** 550 White

**Roof Color:** 515 Regal Blue

# ILLINI PRODUCT FEATURES

**Sizes:** Ranging from 6-50' wide and 12-84' long

**Roof Pitch:** Standard 4/12

**Optional Roof Pitch:** 1/12 - 12/12

**Structure:** Pre-fabricated, powder coated steel frame

**Frame:** Tubular

**Gutters:** Standard extruded aluminum (wood roof excluded)

**Roof:** Structural, interlocking panels for superior strength with less supports

**Standard Roof Panels:** 24" wide "W" design in high strength aluminum or galvalume

**Optional Roof Panels:** 36" galvalume "R" panel, 8" aluminum flat panel, 3" sandwich panel, 18" wide standing seam panel, and tongue & groove wood with shingles

**Add-On Accessories:** Aluminum railing



# MERAMEC SERIES



## FEATURED PROJECT

*School Playground Picnic Area*



**Structure:** 12x20' Meramec Shelter



**Location:** Salem, Illinois



**Design Notes:** Tubular Frame Meramec Shelter

**Frame Color:** 260 Cranberry



**Roof Color:** 540 Tan



# MERAMEC PRODUCT FEATURES

**Sizes:** Ranging from 20-41' wide and 20-54' long

**Roof Pitch:** Standard 3/12

**Structure:** Pre-fabricated, powder coated steel frame

**Frame:** Tubular

**Gutters:** Standard extruded aluminum (wood roof excluded)

**Roof:** Structural, interlocking panels for superior strength with less supports

**Standard Roof Panels:** 24" wide "W" design in high strength aluminum or galvalume

**Optional Roof Panels:** 3" sandwich panel, tongue & groove wood with shingles

**Add-On Accessories:** Aluminum railing



# COLONIAL SERIES



## FEATURED PROJECT *Lake Side Campground Picnic Area*



**Structure:** 12x20' Colonial Shelter



**Location:** Norman, Oklahoma



**Design Notes:** Standard Colonial Shelter without Gable Fill



**Frame Color:** 255 Burgundy

**Roof Color:** 555 Dark Green

# COLONIAL PRODUCT FEATURES

**Sizes:** Ranging from 12-22' wide and 20-40' long

**Roof Pitch:** Standard 3/12

**Structure:** Pre-fabricated, powder coated aluminum components

**Frame:** Tubular aluminum

**Gutters:** Extruded aluminum, purlins and ridge beams are standard

**Roof:** Structural, interlocking panels for superior strength with less supports

**Standard Roof Panels:** 24" wide "W" design in high strength aluminum

**Optional Roof Panels:** 8" aluminum flat panel , 3" sandwich panel

**Gable Fill:** Aluminum gable fill kit is included

**Add-On Accessories:** Aluminum railing



# APACHE SERIES



## FEATURED PROJECT

*Playground Picnic Area*



**Structure:** 16' Diameter Apache Shelter



**Location:** Chicago, Illinois



**Design Notes:** Single tier Apache with Cupola & Top Railing

**Frame Color:** 550 White



**Roof Color:** 515 Regal Blue

# APACHE PRODUCT FEATURES

**Sizes:** 16-44' diameter

**Roof Pitch:** Standard 3/12

**Optional Roof Pitch:** 4/12 - 8/12

**Structure:** Hexagonal design, pre-fabricated, powder coated steel frame

**Frame:** Tubular

**Gutters:** Extruded aluminum gutters sent on standard models & most roof options

**Roof:** Structural, interlocking panels for superior strength with less supports

**Standard Roof Panels:** 24" wide "W" design in high strength aluminum or galvalume

**Optional Roof Panels:** 36" galvalume "R" panel, 8" aluminum flat panel, 3" sandwich panel, 18" wide standing seam panel, and tongue & groove wood with shingles

**Add-On Accessories:** Cupola, double tier roof, aluminum railing, benches



# AZTEC SERIES

## FEATURED PROJECT *Gill Bass Memorial Park*



**Structures:** 18' Diameter Aztec Shelter



**Location:** Milton, Florida



**Design Notes:** Double Tier Shelter with Custom Railing



**Frame Color:** 510 Black

**Roof Color:** 860 Copper Penny

# AZTEC PRODUCT FEATURES

**Sizes:** 16-54' diameter

**Roof Pitch:** Standard 3/12

**Optional Roof Pitch:** 4/12 - 8/12

**Structure:** Octagonal design, pre-fabricated, powder coated steel frame

**Frame:** Tubular

**Gutters:** Extruded aluminum gutters sent on standard models & most roof options

**Roof:** Structural, interlocking panels for superior strength with less supports

**Standard Roof Panels:** 24" wide "W" design in high strength aluminum or galvalume

**Optional Roof Panels:** 36" galvalume "R" panel, 8" aluminum flat panel, 3" sandwich panel, 18" wide standing seam panel, and tongue & groove wood with shingles

**Add-On Accessories:** Cupola, double & triple tier roof, aluminum railing, benches



# CHEROKEE SERIES



## FEATURED PROJECT *Lake Side Rest Area*



**Structure:** 8x10' Cherokee Shelter



**Location:** Rend Lake, Illinois



**Design Notes:** Double Aluminum Benches



**Frame Color:** 535 Ivory

**Roof Color:** 555 Dark Green



## CHEROKEE PRODUCT FEATURES

**Sizes:** Ranging from 8-12' wide and 8-12' long

**Roof Pitch:** Standard 3/12

**Structure:** Pre-fabricated, powder coated steel frame

**Frame:** Tubular

**Gutters:** Extruded aluminum gutters sent on standard models & most roof options

**Roof:** Structural, interlocking panels for superior strength with less supports

**Standard Roof Panels:** 24" wide "W" design in high strength aluminum or galvalume

**Optional Roof Panels:** 36" galvalume "R" panel, 8" aluminum flat panel, 18" wide standing seam panel

**Add-On Accessories:** Bulletin boards, bench, table & bench, double bench



# ALGONQUIN SERIES

## FEATURED PROJECT *Public Park Picnic Area*



**Structure:** 10x16' Algonquin Shelter



**Location:** Bull Shoals, Arkansas



**Design Notes:** Four post, direct bury

**Frame Color:** 510 Black



**Roof Color:** 845 Almond

# ALGONQUIN PRODUCT FEATURES

**Sizes:** Ranging from 10-12' wide and 10-24' long

**Structure:** Pre-fabricated, powder coated Aluminum components

**Frame:** Tubular

**Gutters:** Standard Extruded Aluminum

**Roof:** Structural, interlocking panels for superior strength with less supports

**Standard Roof Panels:** 24" wide "W" design in high strength aluminum or galvalume

**Optional Roof Panels:** 8" aluminum flat panel, 3" sandwich panel

**Add-On Accessories:** Aluminum railing



# PERGOLA SERIES

## FEATURED PROJECT *Retirement Facility Garden Area*



**Structure:** 6x35' Curved Steel Pergola



**Location:** Parkville, Maryland



**Design Notes:** Steel structure, with stamped aluminum panels

**Frame Color:** 550 White



**Roof Color:** 250 PW Bronze

# PERGOLA PRODUCT FEATURES

**Sizes:** Custom designed to fit your application

**Structure:** Pre-fabricated, powder coated aluminum components

**Frame:** Tubular

**Header Options:** Curved/straight steel, extruded aluminum, or 3x8" wood grain embossed aluminum

**Roof Options:** Wood grain embossed aluminum, round extruded aluminum tubes, or stamped aluminum panels (multiple designs available)

**Add-On Accessories:** Fabric drape, roll up curtains



# SHADE SAIL SERIES

## FEATURED PROJECT Poolside Lounge Area



**Structure:** 12x12' One-Post Offset Fabric Shade Sail



**Location:** Evergreen, Colorado



**Design Notes:** Offset single posts

**Frame Color:** 520 Bronze



**Roof Color:** Sand Solamesh Fabric

# SHADE SAIL PRODUCT FEATURES

**Sizes:** Multiple models & sizes

**Structure:** Pre-fabricated, powder coated steel frame

**Frame:** Tubular

**Fabric:** Maintenance free high strength 100% HDPE round yarn

**Fabric Top:** Designed to withstand high winds

**Optional Roof Options:** 10 vibrant colors available



# WALKWAY SERIES

## FEATURED PROJECT *Outdoor Lunch Area*



**Structure:** 12x45' Walkway Cover



**Location:** Farmington, Connecticut



**Design Notes:** 12' tall posts

**Frame Color:** 855 Medium Bronze



**Roof Color:** 520 Bronze



## WALKWAY PRODUCT FEATURES

**Sizes:** Ranging from 6-50' wide and 10-80' long

**Roof Pitch:** Varies depending on structure needs

**Structure:** Pre-fabricated, powder coated steel frame with surface mount brackets

**Frame:** Tubular

**Gutters:** Standard extruded aluminum

**Roof:** Structural, interlocking panels for superior strength with less supports

**Standard Roof Panels:** 24" wide "W" design in high strength aluminum or galvalume

**Optional Roof Panels:** 36" galvalume "R" panel, 6" extruded aluminum flat panel, 8" aluminum flat panel

**Add-On Accessories:** Aluminum railing



# ENTRY COVERS SERIES

## FEATURED PROJECT *Office Building Window Cover*



**Structure:** 6x24' Imperial Window Cover



**Location:** Centralia, Illinois



**Design Notes:** 8" Structural Flat Roof Panels

**Frame Color:** 520 Bronze



**Roof Color:** 520 Bronze

## ENTRY COVER PRODUCT FEATURES

**Sizes:** Ranging from 4-10' projection and 4-25' long

**Structure:** Pre-fabricated, powder coated aluminum components

**Gutters:** Extruded aluminum, 6", 8", 12", or 18" fascia with 4" gutter

**Roof:** Structural, interlocking panels for superior strength with less supports

**Roof Panel Choices:** 6" Aluminum extruded flat panel, 8" Aluminum structural flat panel, 10" Aluminum "V" panel

**Supports:** Overhead braces or post models depending on needs or building structure

**Add-On Accessories:** Crown molding



# SPORTS STRUCTURES SERIES



## FEATURED PROJECT

*Sports Park Bleacher Seating*



**Structure:** 12x36' Full Cantilever Bleacher Cover



**Location:** Columbia, Maryland



**Design Notes:** Embedded mount tubular posts

**Frame Color:** 270 Quartz Gray



**Roof Color:** 560 Anodized

# SPORTS STRUCTURES PRODUCT FEATURES

**Sizes:** Varies depending on application and structure needs

**Structure:** Pre-fabricated, powder coated steel frame

**Frame:** Tubular

**Gutters:** Extruded aluminum gutters sent on standard model & most roof options

**Roof:** Structural, interlocking panels for superior strength with less supports

**Standard Roof Panels:** 24" wide "W" design in high strength aluminum or galvalume

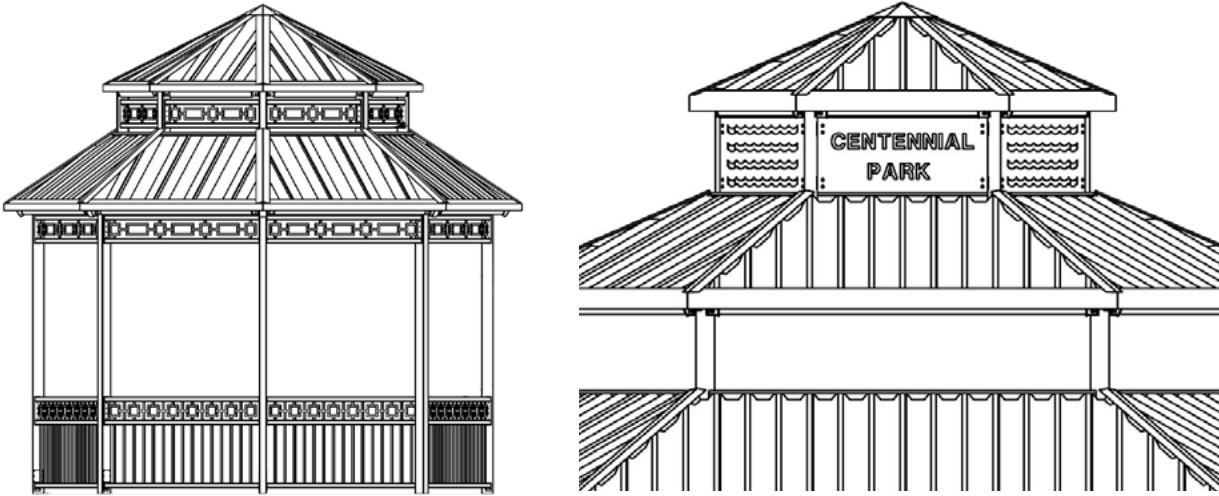
**Optional Roof Panels:** 36" galvalume "R" panel, 8" aluminum flat panel, 3" sandwich panel, tongue and groove wood with shingles

**Add-On Accessories:** Extruded aluminum benches/bleachers



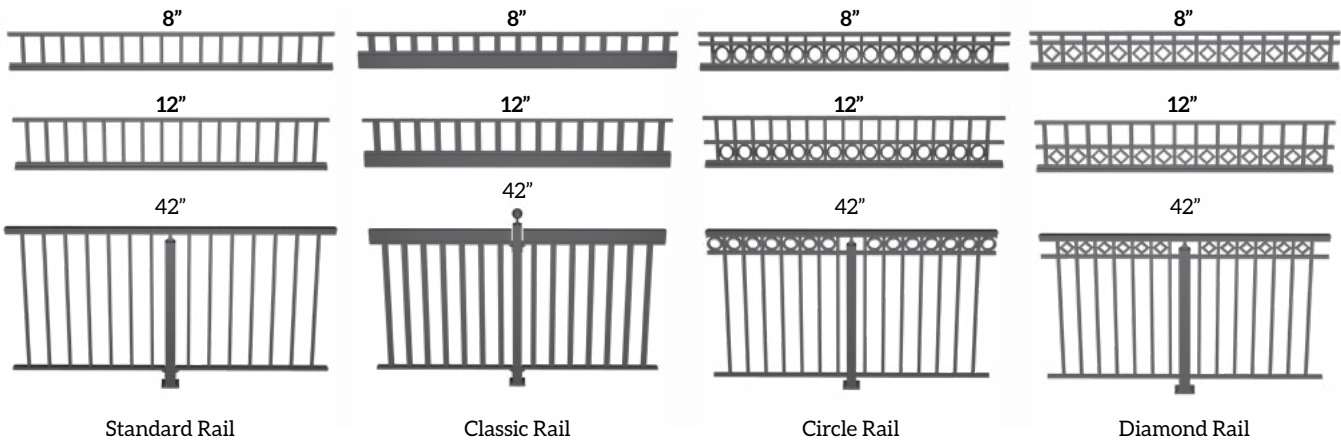
# Options & Accessories

## Custom Railing & Clerestory Decorative Panels



Railing & Clerestory Panels can be customized to fit almost any application, with endless design possibilities. Perfect for displaying logos, affiliations, sponsors, or location information.

## Aluminum Railing Options



## Cupola Options



Louvered or Railed Cupola  
4' x 4' or 2' x 2' Available

Open Cupola  
4' x 4' or 2' x 2' Available

6' x 12' Cupola  
Louvered or Railed

# Frame & Post Style



Americana Shelters utilize tubular frames built with **American-Made** raw materials.

Pre-drilled structure for bolt together assembly, snap together roof panels and detailed assembly instructions help minimize installation costs.

Zinc plated, galvanized or stainless steel fasteners eliminated rust and stains.

## Frame Finishes

### Standard: Super durable frame finishes:

The anti-graffiti, super durable polyester TGIC finish, is a powder that is applied 6-9 mils thick then cured at 400 degrees until fused into a smooth glossy permeate coating. This coating meets AAMA 2604-2 specifications and has a much longer life expectancy than the industries standard TGIC. This anti-graffiti coating provides an outstanding finish.

The smooth glossy surface can withstand numerous cleanups with the use of our proprietary chemical cleaner without altering the finish. Paint and marker can be removed completely with only a slight reduction in gloss.

The architectural matte, super durable polyester TGIC finish, is a powder that is applied 6-9 mils thick then cured at 400 degrees into a smooth matte permeate coating. This coating meets AAMA 2604-2 specifications and has a much longer life expectancy than the industries standard TGIC.

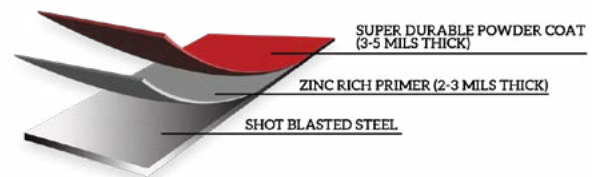
### Premium Frame Finish (up charge)

A 2-3 mil thick zinc rich primer is applied prior to a final standard color coat. This premium finish enhances the ability of your structure to combat even the harshest environments and has withstood over 10,000 hours in our salt/fog test chamber. This primer prevents rust from forming and spreading in the event of nicks and scratches in the color coat, providing the ultimate in pre-finished steel structure coatings.

#### Standard Frame Finish



#### Premium Frame Finish (up charge)



# Frame & Fabric Colors

## Super Durable Frame Color Options



## Super Durable & Anti Graffiti Frame Color Options



## Fabric Shelter Color Options



SolaMesh™, an industry leading performance fabric for shade sails, shade and fabric structures, awnings and other applications, is an exclusive new offering. Made from highly stable and color fast HDPE monofilament and tape. It provides best-in-class strength, value, and longevity.



# Roof Panel Colors & Options

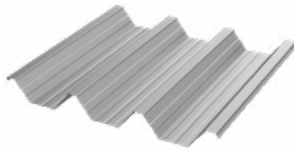
## 24" Aluminum Structural "W" Panel

### Features:

Structural roof panel designed to limit the amount rafters & purlins per structure.

Best overall value when comparing cost & strength.

Gutters are included for water erosion management.

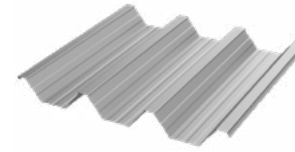


Coverage Width - 24"  
Minimum Slope - 1/2:12  
Thickness - .038" & .024" (560 Anodized Only)  
Finish - Stucco Embossed  
Coatings - DuraCoat XT40 Ceranamel  
Rib Spacing - 8" on center  
Rib Height - 2-1/2"

Compatible with all model shelters except for Pergola



## 24" Galvalume® 24 Gauge Structural "W" Panel



Coverage Width - 24"  
Minimum Slope - 1/2:12  
Gauge - 24  
Finish - Smooth  
Coatings - Siliconized Polyester  
Rib Spacing - 8" on center  
Rib Height - 2-1/2"

Compatible with all model shelters except for Colonial & Pergola



\*Colors containing asterisks have a wash coat bottom side\*

## 36" Galvalume® 26 Gauge "R" Panel

### Features:

Flush fit for a cleaner, sleeker appearance.

Designed to deter bird roosting.

Edge trim is included for a simple & flawless finish.



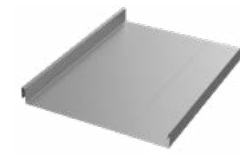
Coverage Width - 36"  
Minimum Slope - 1/2:12  
Gauge - 26  
Finish - Smooth  
Coatings - Siliconized Polyester  
Rib Spacing - 12" on center  
Rib Height - 1-1/4"

Compatible with all model shelters except for Meramec, Colonial & Pergola



\*Colors containing asterisks have a wash coat bottom side\*

## 18" Galvalume® 24 Gauge Standing Seam Panel



Coverage Width - 18"  
Minimum Slope - 1/2:12  
Gauge - 24  
Finish - Smooth  
Coatings - Siliconized Polyester  
Rib Spacing - N/A  
Rib Height - 1-3/4"

Compatible with all model shelters except for Meramec, Colonial, & Pergola



\*Colors containing asterisks have a wash coat bottom side\*

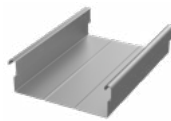
## 8" Aluminum Structural Flat Panel

### Features:

Flush fit for a cleaner, sleeker appearance.

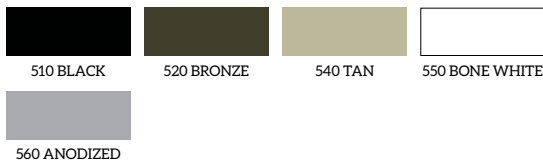
Designed to deter bird roosting.

Gutters are included for water erosion management.



Coverage Width - 8"  
Minimum Slope - 1/2:12  
Thickness - .024", .032", & .040"  
Finish - Smooth Matte Finish  
Coatings - DuraCoat XT40 Ceranamel  
Rib Spacing - N/A  
Rib Height - 2-5/8"

Compatible with all model shelters except for Meramec & Pergola



## 6" Aluminum Extruded Flat Panel



Coverage Width - 6"  
Minimum Slope - 1/2:12  
Thickness - .065"  
Finish - Smooth Gloss Finish  
Coatings - Super Durable Polyester  
Rib Spacing - N/A  
Rib Height - 2-7/8"

Compatible only with Walkways & Entry Covers



Powder coat finish available in all frame colors.  
Full RAL color palette available at additional cost.

### Features:

Insulated panels for noise and temperature control.

Flush fit for a cleaner, sleeker appearance.



**3" thick sandwich panel**  
White stucco finish with foam core

Compatible with all model shelters except for Cherokee, Pergola, Walkways & Entry Covers



**Tongue and Groove Wood**

- 1) Southern Yellow Pine
- 2) Western Cedar

Utilized as sub roofing for shelters using the 18" standing seam panels or shingles.

# Sales & Installation Support

Design and engineering support and documentation to satisfy local requirements: Heavy Snow, Seismic, High Winds, Hail, Custom Designs & Sizes.

Average standard lead times are 6-8 weeks from receipt of approved order. Lead times may vary on design criteria.

Installation and sales support available M-F (8am-5pm) central standard time.

Since Americana is a custom manufacturer, non-standard items are routinely fabricated with no delays. Minimal extra charges may be incurred for engineering.

## Warranty Terms

### Lifetime Limited Warranty

Lifetime Limited Warranty on aluminum against material failure and corrosion.

### 25 Year Limited Warranty

25 Year Limited Warranty on steel against material failure and defects.

### 10 Year Limited Warranty

10 Year Limited Warranty on Solamesh Fabrics

10 Year Limited Warranty on all powder coat finishes (200, 500 and 800 series).

With the use of Americana's 500 Series Anti-graffiti powder coat finish is guaranteed to allow removal of graffiti with virtually no change to the finish.

Americana will not be responsible for damages caused by others, building settlement, corrosion by moisture, chemical and pollution, or acts of God. Damage caused by vandalism, abnormal use, lack of maintenance, or incorrect installation will not be covered.

The logo for PW Sport & Site features the letters 'PW' in a large, bold, white, stylized font. Below 'PW', the words 'SPORT & SITE' are written in a smaller, white, sans-serif font. The background is a dark, blue-tinted photograph of an outdoor setting with trees and a building.

**PW**  
**SPORT & SITE**

The logo for LA Steelcraft features a white, stylized 'S' shape that curves around the text. The text 'LA Steelcraft' is written in a white, bold, sans-serif font. The background is a dark, blue-tinted photograph of an outdoor setting with trees and a building.

**LA Steelcraft**

Looking for Premium Quality Site Furnishings to complement your new shelter?  
PW Sport/Site & LA Steelcraft, a subsidiary of Americana Outdoors has you covered!

Our selection of various site furnishings are a perfect match to the craftsmanship and quality of the Americana shelters. Like our shelter products, all of the site furnishings are 100% made in the U.S.A. and have one of the best warranties in the industry.

For more information give us a call at 1-888-442-2925  
or visit our website at [www.PWathletic.com](http://www.PWathletic.com)



PO Box 1290, Salem IL 62881  
1-800-851-0865, Fax: 1-618-548-2890  
Sales@Americana.com  
www.Americana.com

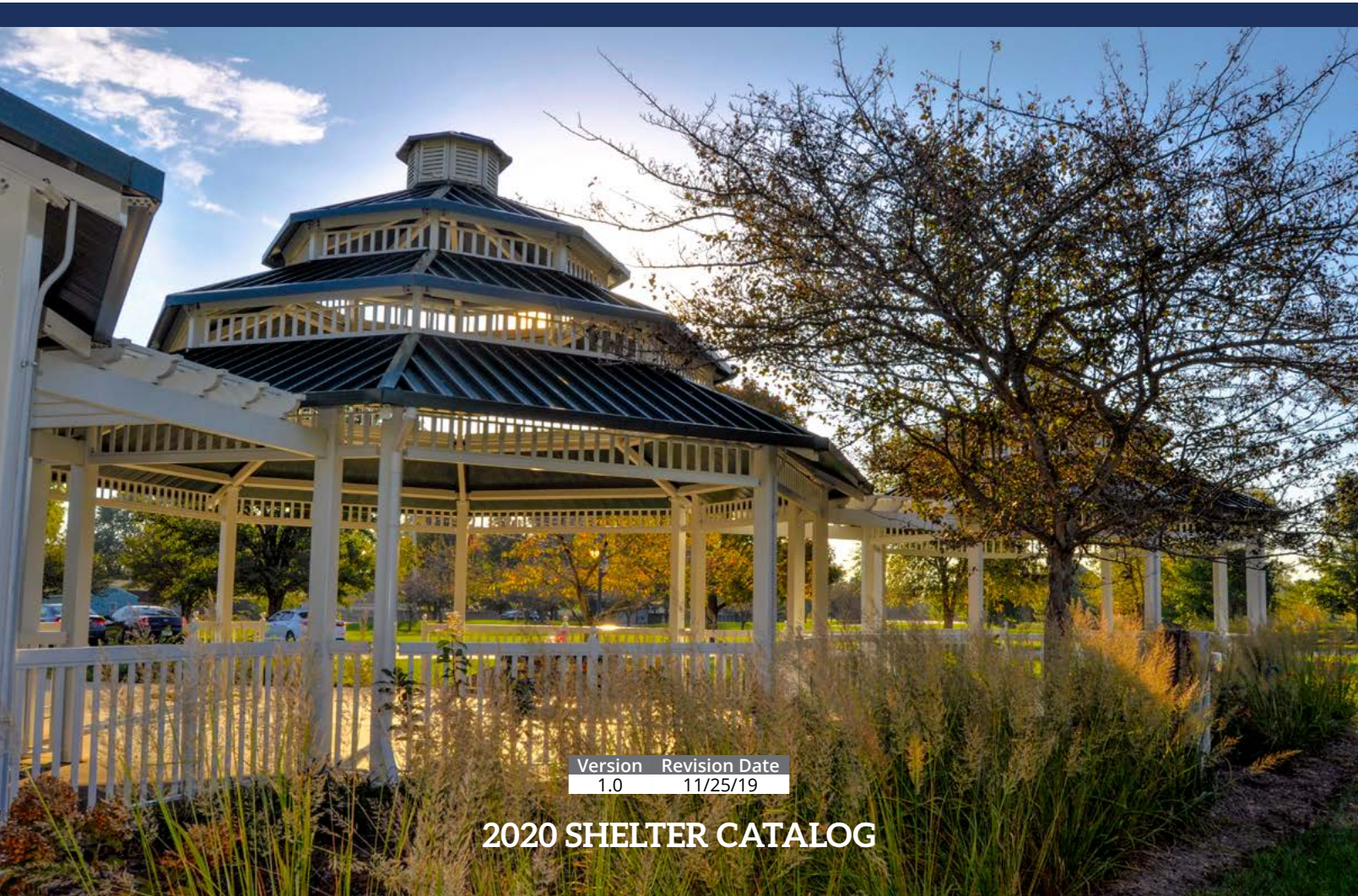
Your Americana Representative:

RECREATION  
TODAY



OUR PROJECT IS YOUR  
PLAYGROUND

2414 E Railroad St  
Nampa, ID 83687  
208.442.9350 or 800.481.8705  
info@rectoday.net | www.rectoday.net



Version	Revision Date
1.0	11/25/19

2020 SHELTER CATALOG